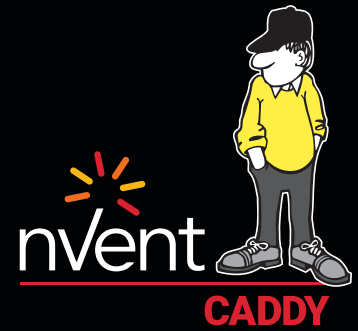
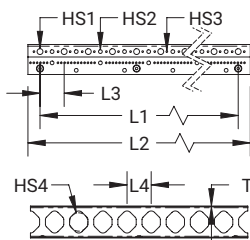
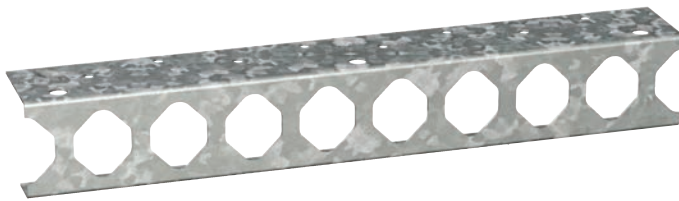


# Conduit Trapeze CCT1



## CONNECT AND PROTECT



The nVent CADDY Conduit Trapeze CCT1 range is a fast and cost-effective method to install smaller branch circuits of conduit in overhead trapeze installations. The CCT1 series reduces installation time and material cost by eliminating the need for traditional fasteners, making it an ideal solution for contractors looking to maximize installation efficiency.

### FEATURES

- Ideal for smaller branch runs
- Shot fire flange for direct attachment to ceiling/deck
- Accommodates  $\frac{3}{8}$ " and  $\frac{1}{4}$ " threaded rod trapeze drops
- Up to 25% material savings over traditional methods
- Reduces installation time up to 50%
- Complies with UL® 2239

Material: Steel | Finish: Pregalvanized  
EMT Conduit Size: 1" | Rigid Conduit Size: 1"



Part Number	Number of Conduits	Thickness T	Hole Size 1 HS1	Hole Size 2 HS2	Hole Size 3 HS3	Hole Size 4 HS4	Length 1 L1	Length 2 L2	Length 3 L3	Length 4 L4
CCT1X15	8	16 GA	$\frac{7}{16}$ "	$\frac{9}{32}$ "	$\frac{1}{8}$ "	1 $\frac{3}{8}$ "	14 $\frac{1}{2}$ "	16 $\frac{5}{16}$ "	1 $\frac{13}{16}$ "	1 $\frac{13}{16}$ "
CCT1X30	16	16 GA	$\frac{7}{16}$ "	$\frac{9}{32}$ "	$\frac{1}{8}$ "	1 $\frac{3}{8}$ "	29"	30 $\frac{13}{16}$ "	1 $\frac{13}{16}$ "	1 $\frac{13}{16}$ "
CCT1X45	24	16 GA	$\frac{7}{16}$ "	$\frac{9}{32}$ "	$\frac{1}{8}$ "	1 $\frac{3}{8}$ "	43 $\frac{1}{2}$ "	45 $\frac{5}{16}$ "	1 $\frac{13}{16}$ "	1 $\frac{13}{16}$ "
CCT1X90	48	16 GA	$\frac{7}{16}$ "	$\frac{9}{32}$ "	$\frac{1}{8}$ "	1 $\frac{3}{8}$ "	87"	88 $\frac{13}{16}$ "	1 $\frac{13}{16}$ "	1 $\frac{13}{16}$ "

Orientation		Mounting Fastener	Fastener Spacing						
			7.25"	14.5"	21.75"	29"	36.25"	43.5"	50.75"
Horizontal	$\frac{3}{8}$ " Threaded Rod	500 lb	500 lb	400 lb	300 lb	266 lb	233 lb	200 lb	
	$\frac{3}{16}$ " Shot-Fire Pin	150 lb	125 lb	–	–	–	–	–	
Vertical	$\frac{3}{8}$ " Fastener	600 lb	600 lb	–	–	–	–	–	

Evenly Distributed Load Rating								
Horizontal	$\frac{3}{8}$ "	–	750 lb	600 lb	475 lb	425 lb	375 lb	300 lb

For  $\frac{3}{8}$ " and  $\frac{1}{4}$ " threaded rod trapeze drops, use washer or SN25 for  $\frac{1}{4}$ " threaded rod applications.  
The table contains maximum conduit size values.



Our powerful portfolio of brands:

**CADDY ERICO HOFFMAN RAYCHEM SCHROFF TRACER**