

T-Series Compact Outdoor Sealed Enclosure Cooling



T15
800 BTU/Hr
234 Watts

T20
2000 BTU/Hr
586 Watts

INDUSTRY STANDARDS

UL/cUL Listed; Type 12, 3R, 4; 4X optional; File No. SA6453
UR/cUR Recognized

UR/cUR Recognized on select models, reference performance data tables.

CE

EAC

Telcordia GR-487 capable

APPLICATION

- Industrial automation
- Telecommunications equipment
- Package handling equipment
- Security and defense systems
- And more

FEATURES

- Stock models equipped with head pressure control for low-ambient operation, compressor heater, coated condenser coil, malfunction switch, thermostat and heater package
- R134A and R513A earth-friendly refrigerant
- Models for 115, 230 and 460 VAC power input

- UL Listed to save customers time and money with agency approvals (some models UL recognized)
- Outdoor model operating temperature range from -40°F/-40°C to 131°F/55°C
- Exterior and fully recessed mounting options on many models
- Compact footprint to minimize real estate and maximize capacity
- Reliable mechanical thermostat on enclosure side of the unit
- Dual condenser-side air movers for performance redundancy
- Painted galvanized sheet-metal cover for rugged factory and outdoor environments
- Easy-mount flanges for simple installation
- Cleanable, reusable aluminum mesh filter protects coils for maximum cooling performance
- Mounting hardware, gaskets and user manual furnished with the unit
- Every unit functionally tested before shipping
- Standard outdoor Air conditioner models also include:
 - Telcordia GR-487 capable
 - Thermostat
 - Corrosion-resistant components
 - Malfunction switch
 - Compressor heater
 - Head pressure control
 - Enclosure heater

FINISH

- RAL 7035 light-gray, semi-textured powder-coat paint
- Other colors and textures available

OPTIONS

- Thermostat malfunction Package
- Special Voltage Package
- Outdoor Package
- Harsh environment Package*
- Stainless Steel Package*
- Heater Package

* ProAir A/C may be more appropriate. Refer to ProAir A/C spec sheet. Consult the Factory for availability and catalog number.

PERFORMANCE DATA T15 800 BTU/HR. (234 WATT) MODELS

Catalog Number

Indoor Model	T150116G120	T150126G120
Outdoor Model without Heat Pkg.	T150116G100	T150126G100
Outdoor Model with Heat Pkg.	T150116G150	T150126G150
Outdoor Model/SST/Corrosion/4X	T150116G152	T150126G104
Outdoor Model/SST/Corrosion/4X/Heater	T150116G151	—

Cooling Performance

Nominal:		
BTU/Hr (50/60 Hz)	800/800	800/900
Watts (50/60 Hz)	235/235	235/264
At Maximum Operating Temperatures:		
BTU/Hr (50/60 Hz)	819	920/960
W (50/60 Hz)	240	270/281
At 95 °F/95 °F (35 °C/35 °C):		
BTU/Hr (50/60 Hz)	948	810/955
W (50/60 Hz)	278	237/280
Refrigerant	R134a or R513A	R134a or R513A
Refrigerant Charge (ounces/grams)	4/113	3.8/107
Operating Temperature Range:		
Maximum (°F/°C)	125/52 (50 Hz) 131/55 (60 Hz)	125/52 (50 Hz) 131/55 (60 Hz)
Minimum (°F/°C)	-40/-40	-40/-40
Airflow at 0 Static Pressure:		
Internal loop 50 Hz (CFM/m ³ /hr)	25/42	25/42
External loop 50 Hz (CFM/m ³ /hr)	48/82	48/82
Internal loop 60 Hz (CFM/m ³ /hr)	30/51	30/51
External loop 60 Hz (CFM/m ³ /hr)	53/90	53/90
Max. Heater W (Outdoor Models)	150	150

Electrical Data

Rated Voltage	100/115	220/230
Frequency (Hz)	50/60	50/60
Operating Range	+/-10%	+/-10%
Max. Power Consumption (Watts at 50/60 Hz)	360/403	330/345
Max. Nominal Current (Amps at 50/60 Hz)	3.6/3.5	1.5/1.5
Starting Current (Amps)	8.0/9.2	3.3/3.1
Agency Approvals	UL/cUL Listed, CE, EAC Others available upon request	
Power Input Description	6-ft. cord with NEMA 5-15 plug	6-ft. cord with NEMA 6-15 plug

Enclosure Protection

UL Type	Type 12, 3R, 4 standard Type 4X Stainless steel optional
---------	---

Controller

Description	Basic mechanical thermostat
Thermostat Location	Enclosure behind front panel
Factory Thermostat Setting (°F/°C)	80/27

Sound Level

At 1.5 Meters	63 dB(A)
---------------	----------

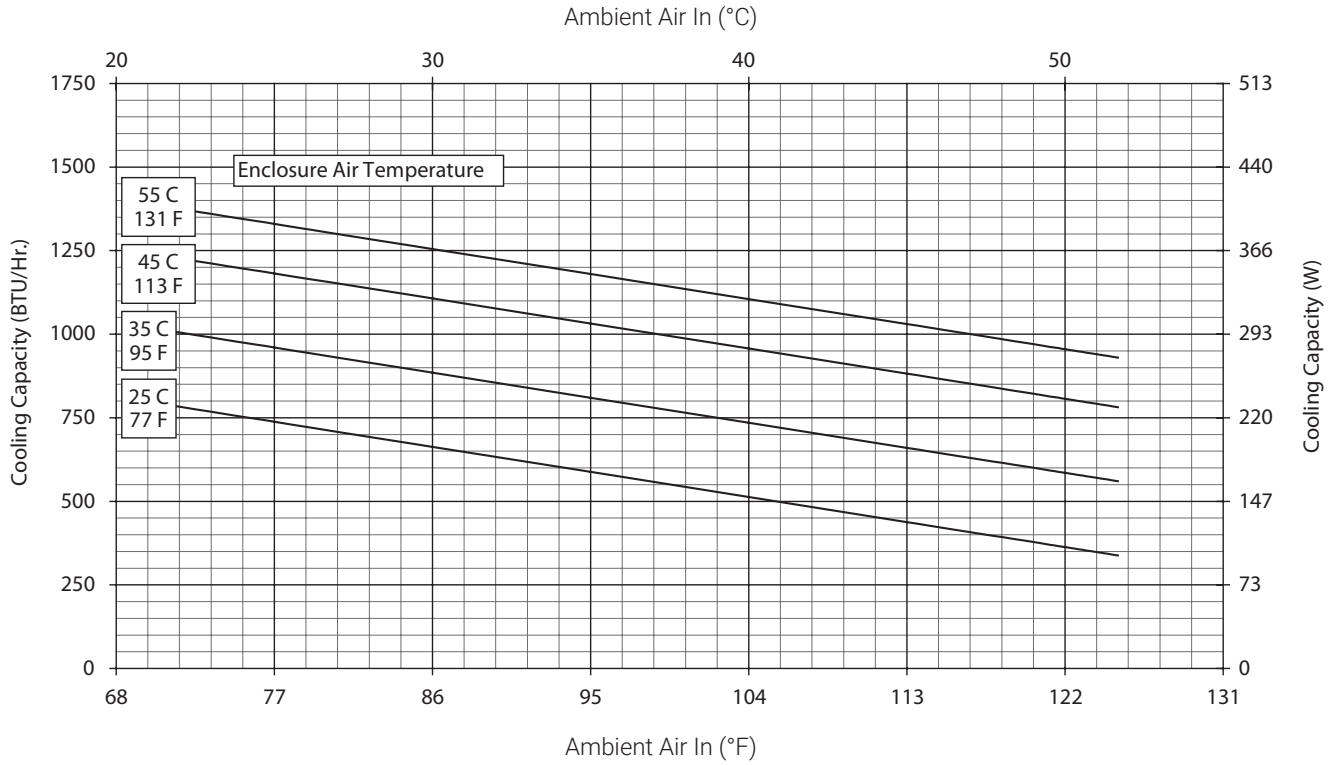
Unit Construction

Material	Galvanized sheet metal standard Stainless steel optional
Finish	RAL 7035 light-gray, semi-textured powder-coat paint standard

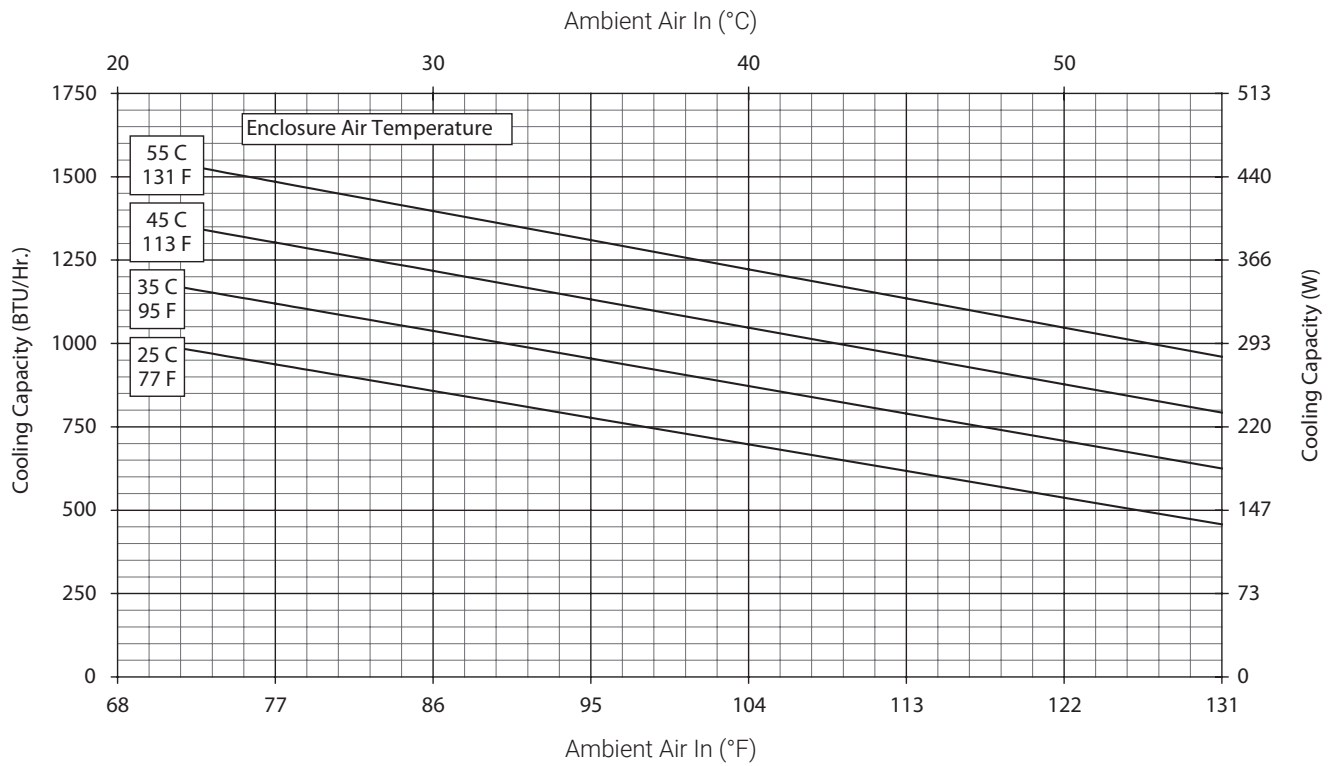
Unit Dimensions

Height (in/mm)	15.75/400
Width (in/mm)	7.5/191
Depth (in/mm)	6.3/160
Weight (lb/kg)	27/12

T15-01x6-Gxxx Capacity Curves 50 Hz

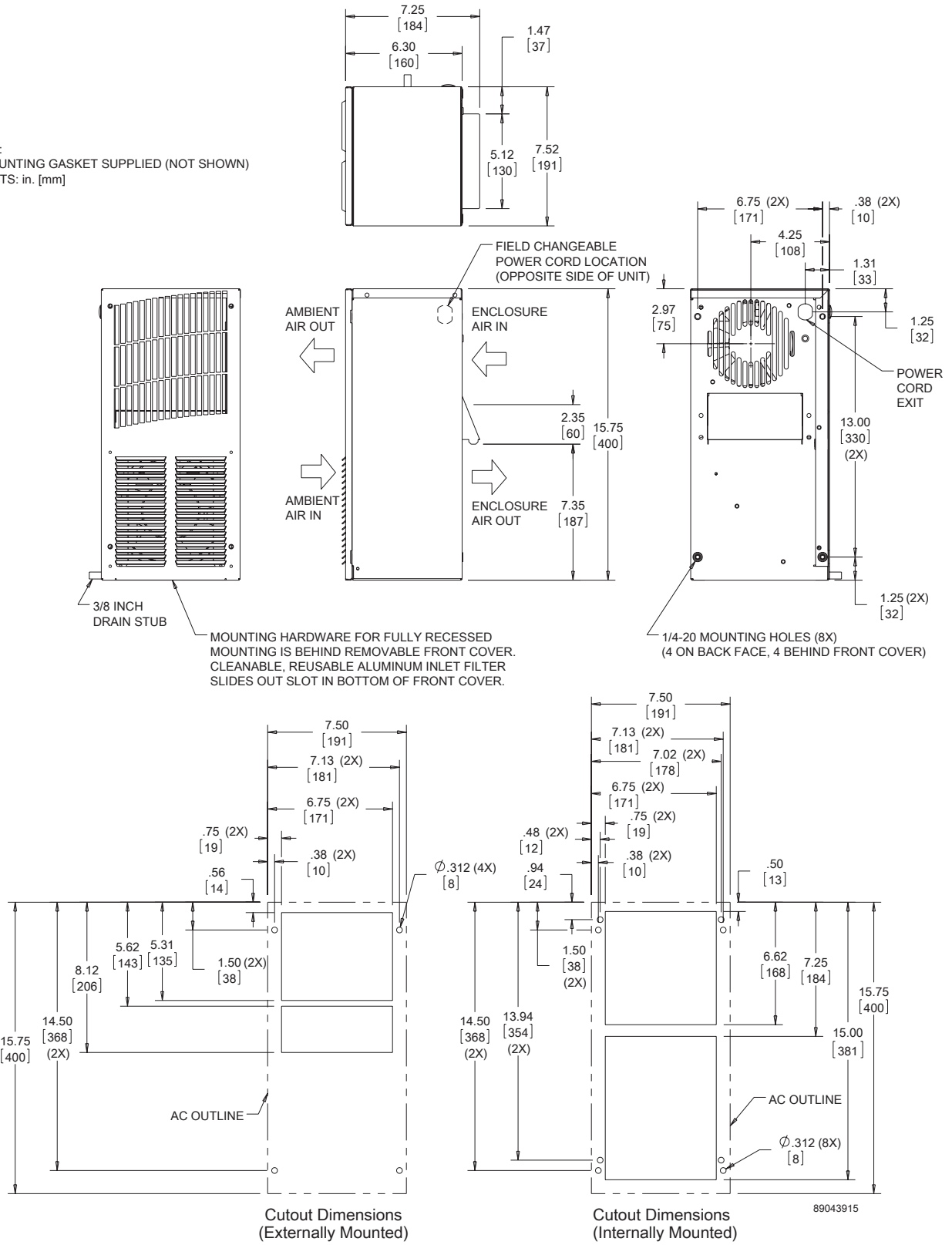


T15-01x6-Gxxx Capacity Curves 60 Hz



T15 800 BTU/HR (234 WATT)

NOTE:
 1. MOUNTING GASKET SUPPLIED (NOT SHOWN)
 2. UNITS: in. [mm]



Visit www.nVent.com/HOFFMAN to download 2D and 3D CAD drawings into the overall design of your electrical system.

PERFORMANCE DATA T20 2000 BTU/HR (586 WATT) MODELS

Catalog Number

Outdoor Model without Heat Pkg.	T200216G100	T200226G100	T200246G400
Outdoor Model with Heat Pkg.	T200216G150	T200226G150	—
Outdoor Model/SST/Corrosion/4X	T200216G155	T200226G103	T200246G401
Outdoor Model/SST/Corrosion/4X/Heater	T200216G157	T200226G158	—

Cooling Performance

Nominal:			
BTU/Hr (50/60 Hz)	1800/2000	1800/2000	1800/2000
Watts (50/60 Hz)	528/586	528/586	528/586
At 131 F/131 F (55 C/55 C):			
BTU/Hr (50/60 Hz)	2000/2175	2000/2175	2000/2175
W (50/60 Hz)	586/637	586/637	586/637
At 95 F/95 F (35 C/35 C):			
BTU/Hr (50/60 Hz)	1800/1975	1800/1900	1800/1900
W (50/60 Hz)	571/645	571/645	571/645
Refrigerant	R134a or R513A	R134a or R513A	R134a or R513A
Refrigerant Charge (ounces/grams)	6.5/184	6.5/184	6.5/184
Operating Temperature Range:			
Maximum (°F/°C)	131/55	131/55	131/55
Minimum (°F/°C)	-40/-40	-40/-40	-40/-40
Airflow at 0 Static Pressure:			
Internal loop 50 Hz (CFM/m ³ /hr)	77/131	77/131	77/131
External loop 50 Hz (CFM/m ³ /hr)	150/255	150/255	150/255
Internal loop 60 Hz (CFM/m ³ /hr)	91/155	91/155	91/155
External loop 60 Hz (CFM/m ³ /hr)	165/280	165/280	165/280
Max. Heater W (Outdoor Models)	500	500	500

Electrical Data

Rated Voltage	115	230	460V 1PH
Frequency (Hz)	50/60	50/60	50/60
Operating Range	+/-10%	+/-10%	+/-10%
Max. Power Consumption (Watts at 50/60 Hz)	700/805	805	874
Max. Nominal Current (Amps at 50/60 Hz)	7.0/7.0	3.5/3.5	1.9
Starting Current (Amps)	19	7.6	7.2
Agency Approvals	UL/cUL Listed, CE, EAC Others available upon request		cUR Recognized CE, EAC
Power Input Description	6-ft. cord with NEMA 5-15 plug	6-ft. cord with NEMA 6-15 plug	6-ft. cord with wire leads

Enclosure Protection

UL Type	Type 12, 3R, 4 standard Type 4X Stainless steel optional
---------	---

Controller

Description	Basic mechanical thermostat
Thermostat Location	Enclosure side on all base models
Factory Thermostat Setting (°F/°C)	80/27

Sound Level

At 1.5 Meters	66 dB(A)
---------------	----------

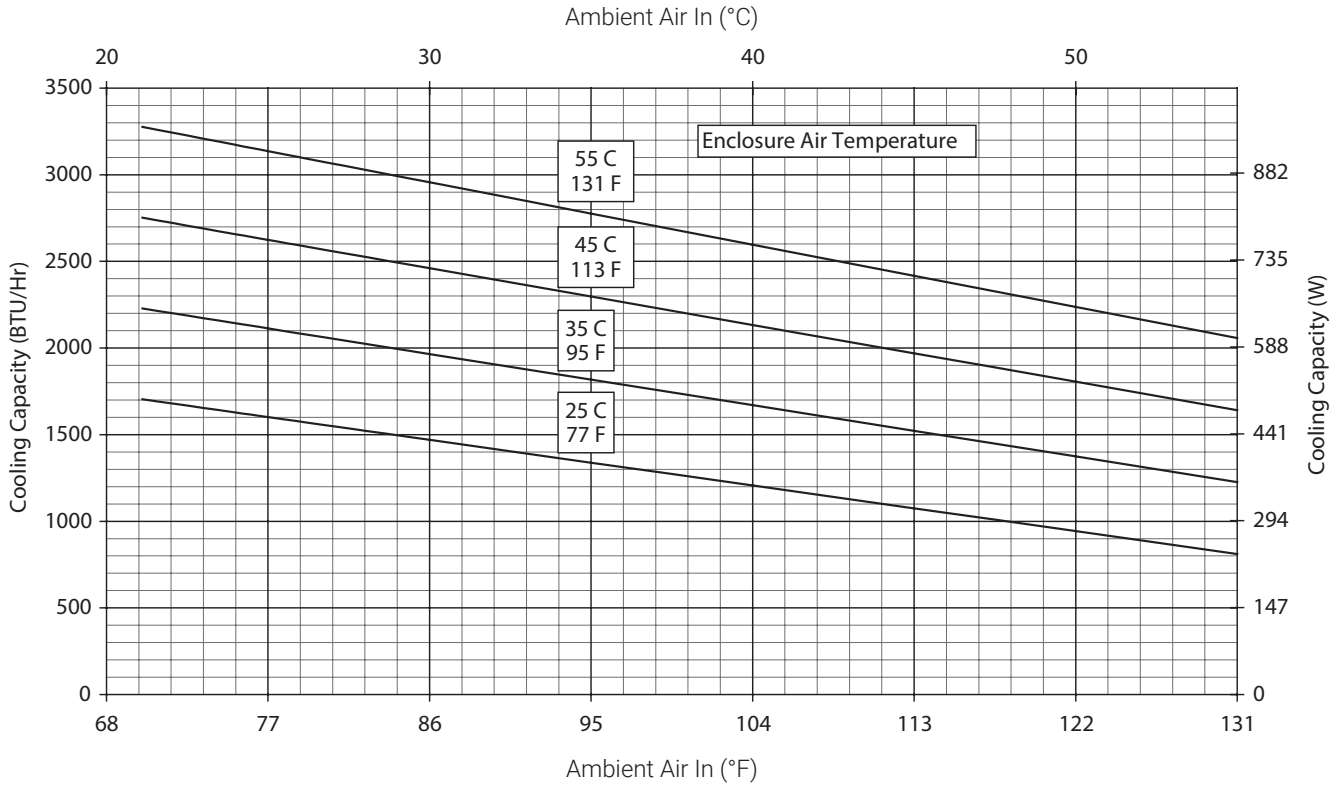
Unit Construction

Material	Galvanized sheet metal standard Stainless steel optional
Finish	RAL 7035 light-gray, semi-textured powder-coat paint standard

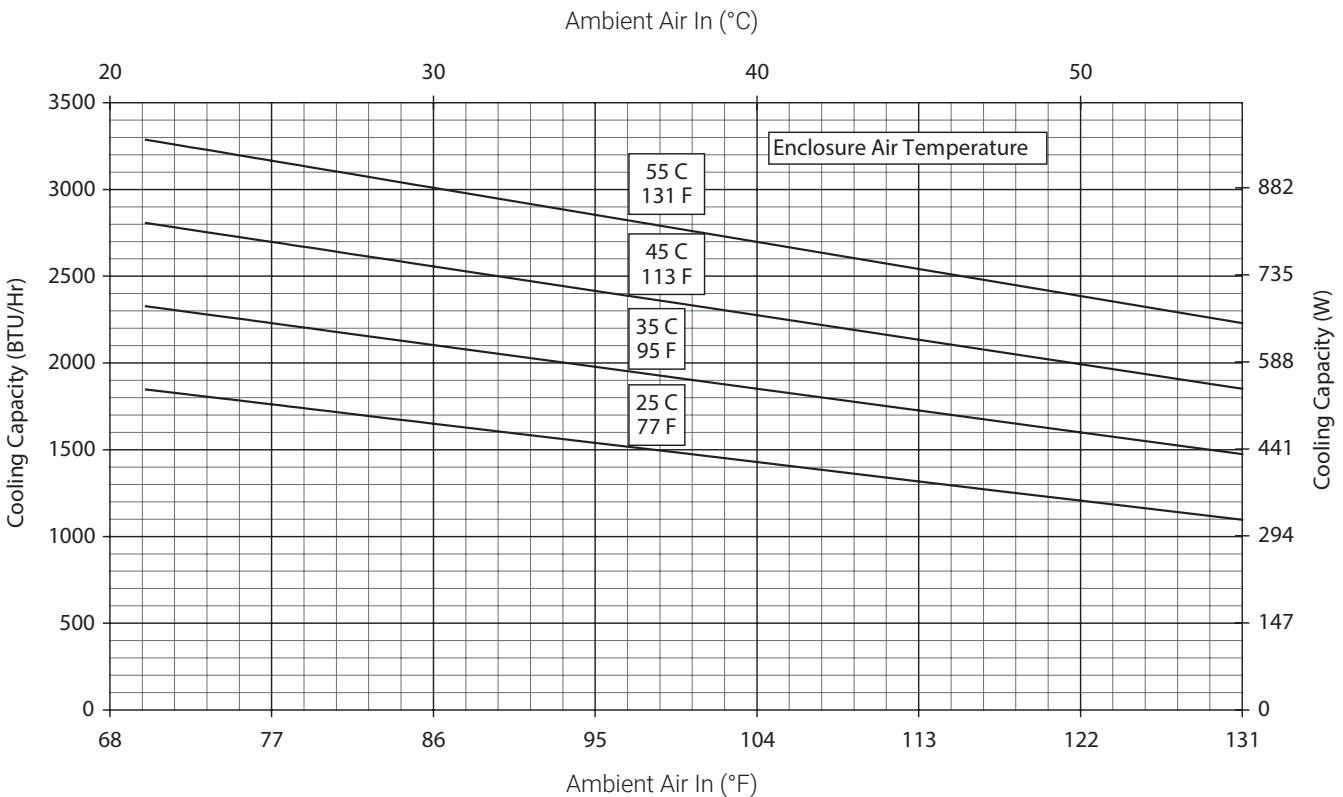
Unit Dimensions

Height (in/mm)	20/508	20/508	24.25/615.95
Width (in/mm)	10/254	10/254	10/254
Depth (in/mm)	9.9/251	9.9/251	9.9/251
Weight (lb/kg)	56/25	56/25	66/30

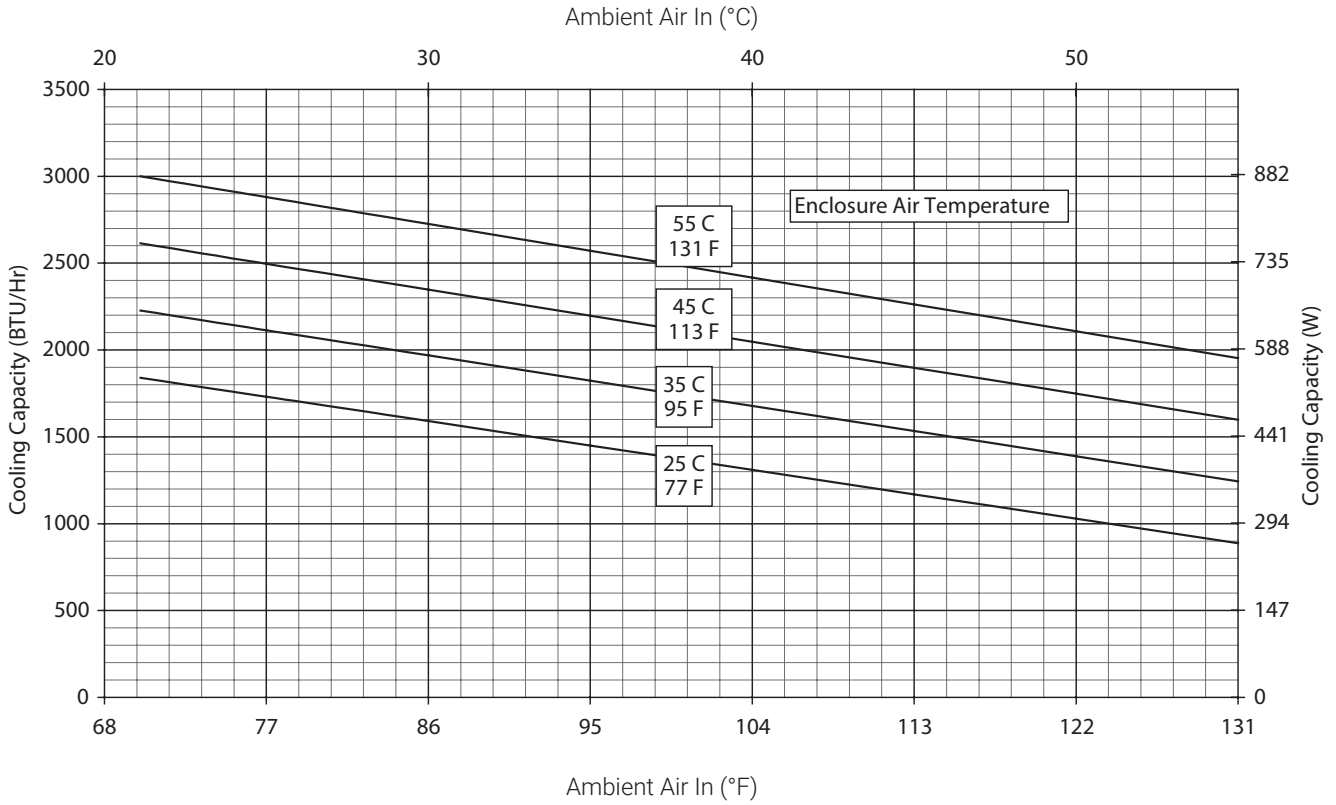
T200216Gxxx Capacity Curves at 50 Hz



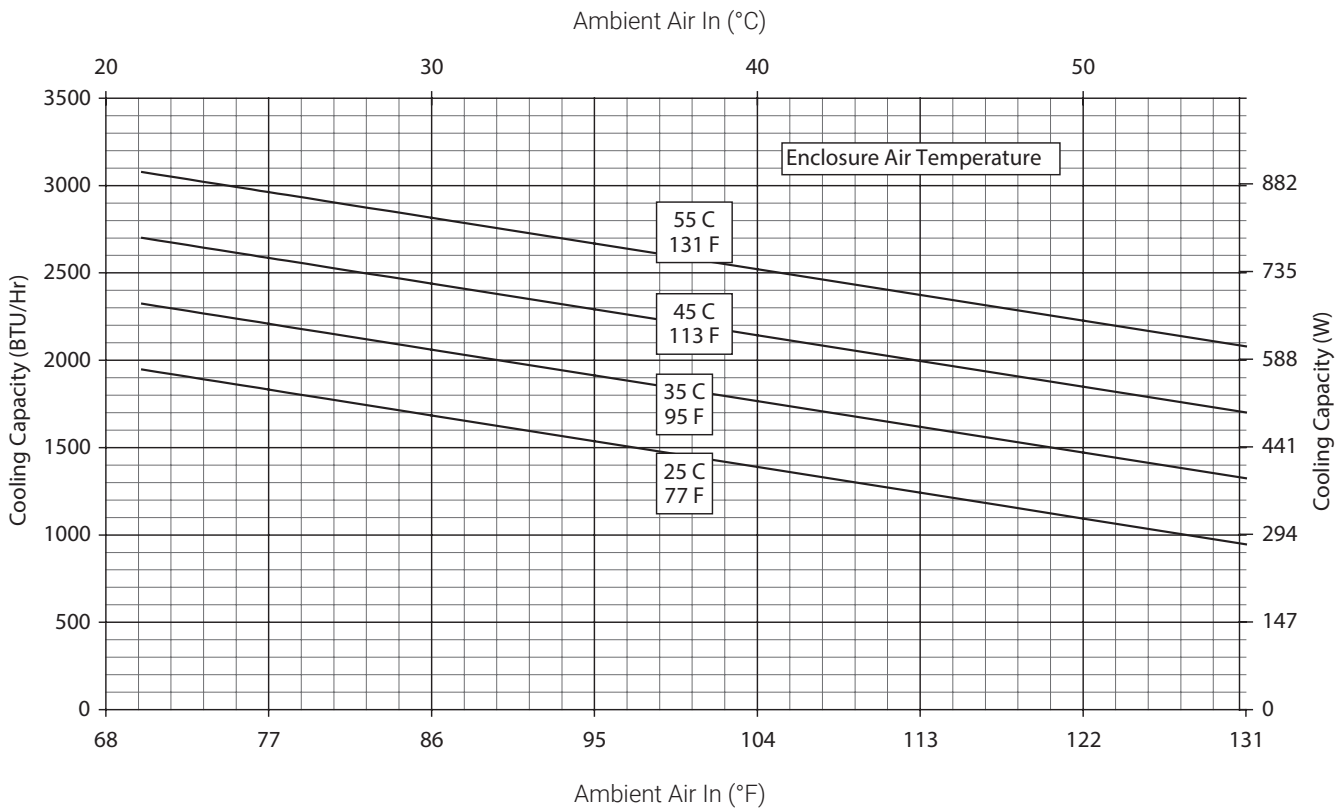
T200216Gxxx Capacity Curves at 60 Hz



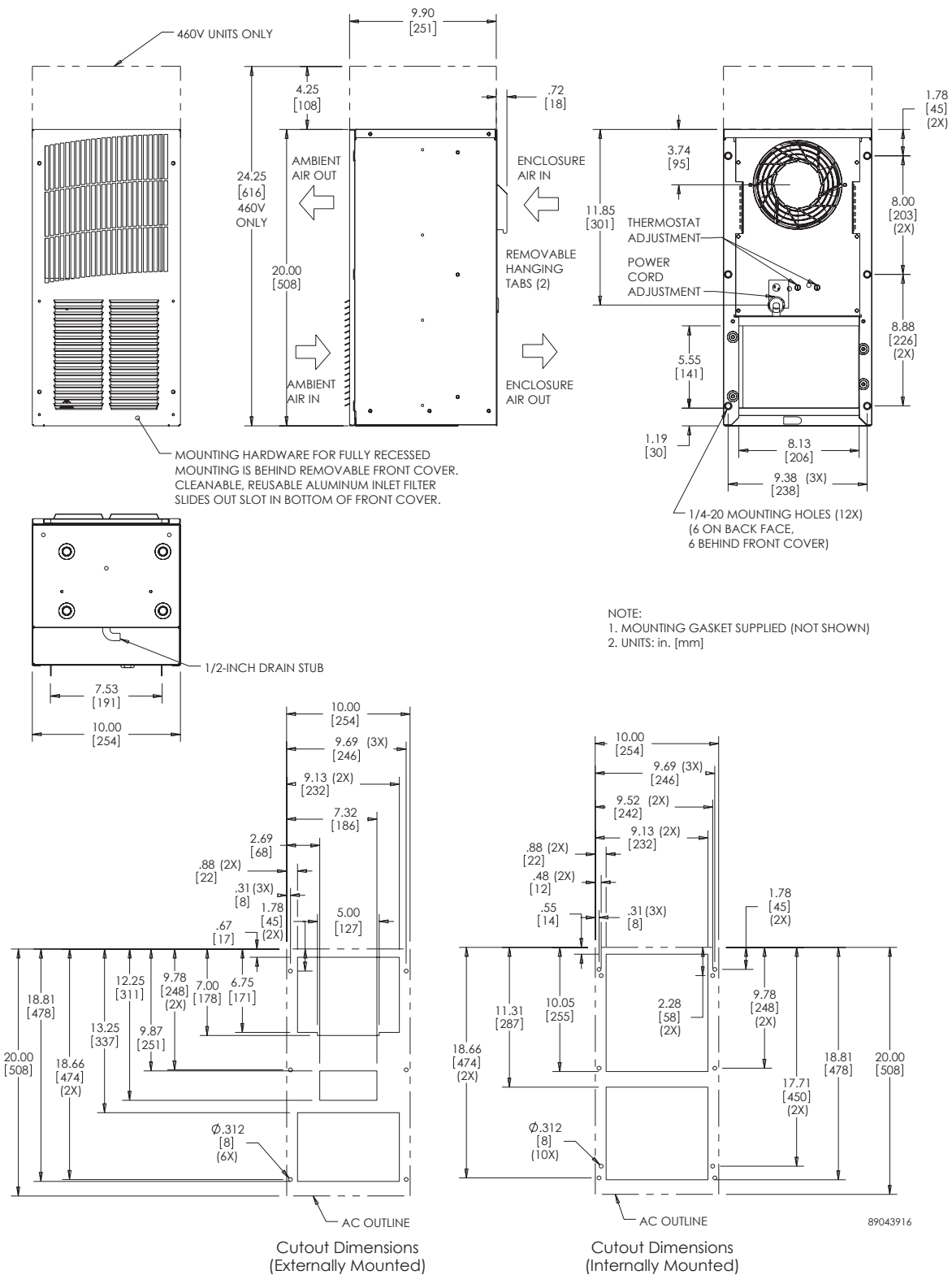
T200226Gxxx Capacity Curves at 50 Hz



T200226Gxxx Capacity Curves at 60 Hz



T20 2000 BTU/HR (586 WATT)



NOTE:
1. MOUNTING GASKET SUPPLIED (NOT SHOWN)
2. UNITS: in. [mm]

Visit www.nVent.com/HOFFMAN to download 2D and 3D CAD drawings into the overall design of your electrical system.



Our powerful portfolio of brands:

CADDY ERICO HOFFMAN ILSCO RAYCHEM SCHROFF