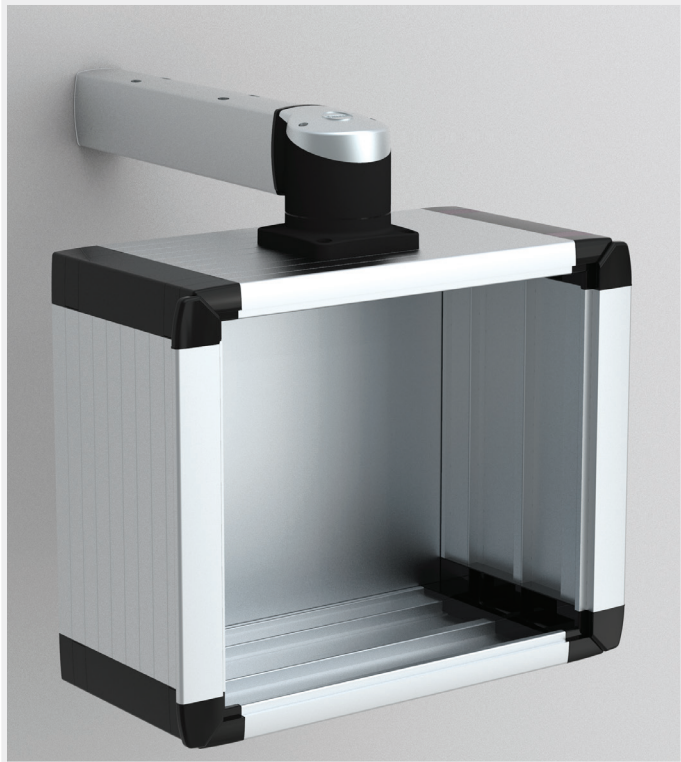


OICP343920

Operator Interface Control Panel



H	345
W	395
D	200
Weight (kg)	7.00
Item no.	OICP343920

Material: Body: Al Mg Si05. Rear plate: Al Mg. Corners: AISI 12.

Protection: IP 65.

Finish: Body and rear plate: anodised aluminium. Corners: RAL 7016.

Mounting requirements: OIFP front panel is not included in the standard delivery and needs to be ordered separately.

Delivery: Body, screwed rear plate, front plate mounting kit, and mounting accessories.

The aluminium operator interface control panel, OICP, has a pre-machined hole pattern to allow for the desired fixation to a swing arm, plus a removable front plate at a IP 65 protection degree. Components can be easily fitted thanks to the removable front plate, but will also be easily accessible through a removable rear panel. Side handles on the enclosure allow for easy movement of the enclosure into the desired working position. The aluminium body will dissipate more heat than a mild steel body, which may eliminate the need for additional ventilation.



IP 65