



**CONNECT AND PROTECT**

# ProLine G2 Configuration Handbook

Engineered for Industrial Environments

  
nvent

**HOFFMAN**

# Proven Stronger. Extended Capabilities.

**ProLine G2 is the stronger modular solution designed to handle more than industrial applications.**

The frame has a 15% higher load rating than the competition and the subpanel can hold greater than 45% more weight. This allows heavier electronics to be installed into smaller cabinets to save floor space.

The ProLine G2 offering has been expanded with Industrial Packages that accommodate Type 3R and Seismic applications, as well as new and upgraded components.

With more than 400 standard industrial packages, there's one to fit almost any application.



## Custom Solutions from Standard Components

ProLine G2 features a comprehensive set of standard components and accessories. These standard components can be used to create a custom enclosure uniquely suited to your application. This configuration handbook can be used to review some of our most popular ProLine G2 accessories options.

## How to use this Handbook

Step 1: Select

Circle or check the components that you need.

### SELECT YOUR FRAME HEIGHT, WIDTH AND DEPTH

Circle Height (mm)	Circle Width (mm)	Circle Depth (mm)
600	600, 800	400, 600, 800
800	600, 800	400, 600, 800
1000	600, 800, 1200	400, 500, 600, 800
1200	600, 800, 1200	400, 500, 600, 800
1400	600, 800, 1200	500, 600, 800
1600	600, 800, 1200	500, 600, 800
1800	600, 800, 1200, 1600	400, 500, 600, 800
2000	400, 600, 800, 1000, 1200, 1600, 1800	400, 500, 600, 800, 1000
2200	400, 600, 800, 1000, 1200, 1600, 1800	400, 500, 600, 800, 1000

Step 2: Send

Give a hardcopy or send a scanned copy of the configuration handbook to your nVent HOFFMAN representative who will work with you to configure the ProLine G2 modular enclosure solution that best fits your needs.

### QUESTIONS?

Have questions about components or configuration? Pages 9-12 of this handbook have a brief description of each component. Additional information can be found in the Specifier's Guide which you can download on the HOFFMAN web site. Or, feel free to contact one of HOFFMAN's enclosure experts who will provide application advice and help you configure your enclosure.

Web: <http://www.nVent.com/HOFFMAN>

Email: [customerservice@nVent.com](mailto:customerservice@nVent.com)

HOFFMAN-USA - 763 422 2211

HOFFMAN-INTL - 763 422 2570

# Project and Enclosure Overview

Project Name: \_\_\_\_\_ Company: \_\_\_\_\_

Contact Name: \_\_\_\_\_ Contact Information (email/phone): \_\_\_\_\_

## SELECT YOUR FRAME HEIGHT, WIDTH AND DEPTH

Circle Height (mm)	Circle Width (mm)	Circle Depth (mm)
600	600, 800	400, 600, 800
800	600, 800	400, 600, 800
1000	600, 800, 1200	400, 500, 600, 800
1200	600, 800, 1200	400, 500, 600, 800
1400	600, 800, 1200	500, 600, 800
1600	600, 800, 1200	500, 600, 800
1800	600, 800, 1200, 1600	400, 500, 600, 800
2000	400, 600, 800, 1000, 1200, 1600, 1800	400, 500, 600, 800, 1000
2200	400, 600, 800, 1000, 1200, 1600, 1800	400, 500, 600, 800, 1000

Number of Enclosures: \_\_\_\_\_ Desired Type Rating  Type 12

Type 3R

Do you need an EMC frame?  Yes  No Desired Paint Color  Light Gray (RAL 7035)  Other

Do you need to join/gang your enclosures?  Yes  No

If Yes, what is the desired joining direction?

Side-to-Side  Front-to-Back  Front-to-Side  Other Joining notes: \_\_\_\_\_

## External Components

### CIRCLE YOUR FRONT, REAR AND SIDES



#### Solid Cover

- Front
- Rear
- Left Side
- Right Side
- EMC

#### Solid Door

- Front
- Rear
- Left Side\*
- Right Side\*
- EMC

#### Window Door

- Front
- Rear
- Left Side\*
- Right Side\*
- Polycarbonate
- Safety Glass

#### Overlapping Double Door

- Front
- Rear
- EMC

#### Perforated Door

- Front
- Rear
- Left Side\*
- Right Side\*

#### Partial Doors

- Front
- Rear

#### Dress Frame

- Front
- Rear

\* Items require side door adapter for installation.

# External Components

## SELECT YOUR SAFETY SOLUTIONS



Disconnect Doors  
 Front  Rear



Mechanical Interlock



Electrical Interlock



Barrier Panels



Sequestr Package

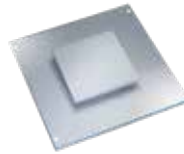
## SELECT YOUR TOP/ROOF



Solid Top  
 EMC Option



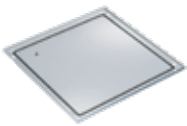
High-Performance Pagoda Exhaust Vent



Pagoda Top

No Top  
 Other \_\_\_\_\_

## SELECT YOUR BASE



Solid Base  
 EMC Option



Fully Sealed Plinth Base  
 EMC Option



100 mm Plinth Base  
 200 mm Plinth Base



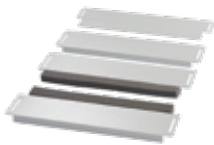
Transportation Base



Mobile Base

No Base  
 Other \_\_\_\_\_

## SELECT YOUR BASE ACCESSORIES (OPTIONAL)



Duro-Stand Gland Plate  
 Galvanized  
 Painted  EMC Option



Cable Entry Gland Plate



Internally Mounted Gland Plate



Vented Gland Plate



Frame Floor-Mounting Internal Bracket  
 Frame Floor-Mounting External Bracket



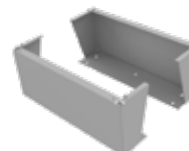
Vented Plinth Base Cover



Plinth Base Mounting Bracket Kit



Standard Post Type Caster  
 Reinforced Plate Caster



Floor Stand Kit



Standard Levels  
 HD Swivel Levels

# External Components

## SELECT YOUR HANDLE (OPTIONAL)



### Flush Swing Handles

- Handle with Screwdriver Defeater
- Handle with Keylock
- Handle for Padlock
- Handle with DIN Profile Provision
- Small Flush Swing Handle
- Flush Bezel with Insert
- Small Flush Bezel with Insert
- L Handle

### Key Inserts

- 7 mm triangle
- 8 mm triangle
- 8 mm triangle
- 7 mm square
- Double-bit with 3 mm pin
- Double-bit insert
- Other \_\_\_\_\_

## SELECT YOUR DOOR ACCESSORIES



- Door Stop Kit
- Thermoplastic Data Pocket
- Steel Data Pocket
- Folding Shelf (Door)
- Door Bar Grid Straps
- Other \_\_\_\_\_

## SELECT YOUR EXTERIOR ACCESSORIES



- Lifting Eyes
- Lifting Bars
- Lifting Angles
- Hole Seals (mm)
  - micro
  - 22.5
  - 30.5
- Hole Seals (Inch)
  - 1/2
  - 3/4
  - 1
  - 1 1/4
  - 1 1/2
  - 2
  - 2 1/2
  - 3
  - 3 1/2
  - 4
  - Qty \_\_\_\_\_
- Tamperproof Hardware
- Anti-tip Bracket
- Wall-Mount Bracket

# Internal Components

## SELECT YOUR PANEL MOUNT SOLUTIONS (OPTIONAL)



- Full Mounting Subpanel
- Galvanized
- Painted



- Panel Support Bracket



- Partial Subpanel Height \_\_\_\_\_
- Galvanized
- Painted
- Side-Mount Option



- Swing-Out Subpanel
- Galvanized
- Painted

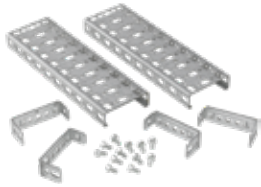


- Side-Mount Subpanel
- Galvanized
- Painted

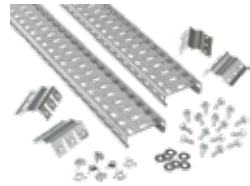


- Joining Subpanel
- Galvanized
- Painted

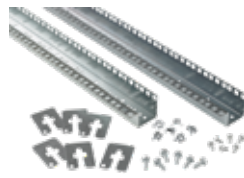
## SELECT YOUR RACK OR GRID MOUNT SOLUTIONS (OPTIONAL)



- Grid Strap (Pair)**
- Bracket-mount design
- Single-piece design
- One Row Hole Pattern
- Three Row Hole Pattern
- Width Qty\* \_\_\_\_\_
- Depth Qty\* \_\_\_\_\_
- \*Number of pairs



- Vertical Grid Strap (Pair)**
- Three Row Hole Pattern
- Qty\* \_\_\_\_\_
- \*Number of pairs



- 19-in. Rack Angle (Pair)**
- Square Hole
- Tapped Hole
- Qty\* \_\_\_\_\_
- \*Number of pairs



- Adjustable Rack Mount Rails (Pair)**
- Attach across Width
- Attach across Depth
- Other \_\_\_\_\_



- Frame Reducing Bracket (Pair)**
- Reduce frame width (mm)
- 50
- 100
- 200

## SELECT YOUR SWING-OUT RACK OPTIONS



- Heavy-Duty Swing-Out Rack Frame**
- Frame Width (mm)
- 600  800
- Rack Angle Units
- 10  25  30
- 34  39  43



- Full Access Rack**
- Rack Height
- 1800
- 2000
- 2200

- Other Accessories**
- 170 degree hinge
- 120 degree stop arm kit
- 170 degree stop arm kit

## SELECT YOUR RACK PANEL OPTIONS



- Rack Panels**
- Material**  Aluminum  Steel
- Rack Angle Units**
- 1  2  3  4  5  6  7
- 8  9  10  11  12  16
- Other \_\_\_\_\_

# Internal Components

## SELECT YOUR INTERIOR ACCESSORIES (OPTIONAL)

---



Ground Wire Kit



Ground Plate Kit  
 Bonding Straps



Additional Grounding Bar system



Select your LED Light Options

- Power**     AC     DC  
**Switch**     On/off     Motion  
**Mounting**     Screw     Magnetic



Remote Door Switches

## SELECT YOUR SHELF/COMPARTMENT (OPTIONAL)

---



Frame Shelf



Internal Barrier Panels



Pull-Out Shelf



Rack-Angle Mounted Drawer



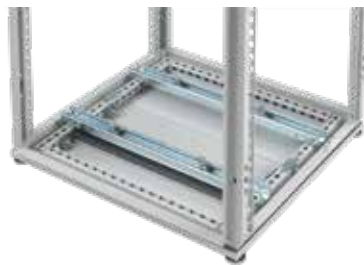
Keyboard Compartment

## SELECT ADDITIONAL MOUNTING COMPONENTS (OPTIONAL)

---



Support Bracket Kit



Transformer Rails



Center Upright

# Cable Management Solutions

## SELECT YOUR CABLE MANAGEMENT ACCESSORIES



Cable Entry Cabinet



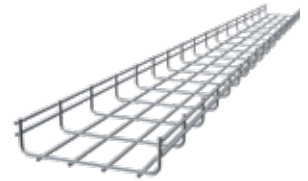
Top Mounting Module  
 200mm Height  
 300mm Height



Vertical Tie-Down Cable Manager  
 Qty \_\_\_\_\_



Tie-Down Reducing Bracket  
 Qty \_\_\_\_\_



Basket Tray  
 Qty \_\_\_\_\_



Universal Power Strip Bracket  
 Qty \_\_\_\_\_



Wire Management Rails (set of 20)  
 Qty \_\_\_\_\_



D-Ring Cable Managers (set of 10)  
 Qty \_\_\_\_\_



Universal D-Ring Bracket (set of 10)  
 Qty \_\_\_\_\_



8" VELCRO® Cable Wrap (set of 10)  
 12" VELCRO® Cable Wrap  
 Qty \_\_\_\_\_



Frame Tie-Down Bracket (set of 10)  
 Qty \_\_\_\_\_



Cable Spools (set of 10)  
 Qty \_\_\_\_\_



Fiber Management Spool (set of 4)  
 Qty \_\_\_\_\_



Strut Cable Rings (set of 10)  
 Qty \_\_\_\_\_



Universal Transition Bracket (set of 8)  
 Qty \_\_\_\_\_



# Component Descriptions

## EXTERNAL COMPONENTS

---

### PROLINE G2 FRAME

12 gauge (2.5 mm) roll-formed steel frame with fully welded solid steel corner blocks and innovative hybrid frame profile for superior performance under load. Rectangular holes and round hole pattern that accommodates the 25 mm DIN standard. Frames  $\geq 1200$  mm have a removable rear center post. EMC options available.

### SOLID COVER

Steel cover for front/rear/side with a foam-in-place urethane gasket and two grounding studs. EMC options available.

### SOLID DOOR

Steel door with reversible hinge, foam-in-place urethane gasket and two grounding studs. A removable door bar grid strap system is included on doors. EMC options available.

### WINDOW DOOR

Choice of safety glass or polycarbonate window to enable viewing of electronic equipment. A foam-in-place urethane gasket, hidden hinges, and two grounding brackets. Single and Overlapping Double options available.

### OVERLAPPING DOUBLE DOOR

Overlapping doors are available for frames  $\geq 800$  mm. Removable door bar grid straps are included on doors.

### PERFORATED DOOR

Steel door with perforated insert to support air passage. Reversible hinge, foam-in-place urethane gasket, door bar grid system, and two grounding studs included on doors.

### PARTIAL DOORS

Steel door(s) that do not travel the full height of the enclosure, allowing a user to segregate electronics in bays separated along the vertical. Note that a custom frame is required to support partial door installation, and internal barrier panels are recommended.

### DRESS FRAME

Provides a decorative trim when a front door or cover is not used.

### DISCONNECT DOOR

Provides a means to mount flange-mount disconnects. Hinged mullion provides unobstructed access to interior, easing equipment installation. Standard and large cutout options to accommodate standard size or large size disconnect switches and circuit breaker operating handles.

### MECHANICAL INTERLOCK

Can be actuated by any ProLine G2 solid or disconnect door in a multiple-bay enclosure system. When actuated secondary doors cannot be opened until disconnect switch is thrown, and primary door is opened. System cannot be re-energized until all secondary doors and then primary are closed.

### ELECTRICAL INTERLOCK

Provides positive internal safety lockout on electrical enclosures. When energized, these interlocks prevent the door handle from being turned to open the door.

### BARRIER PANEL

Designed to be used as a buffer between joined or ganged enclosure systems. When mounted to the enclosure, they maintain enclosure environmental integrity. Sequestr and EMC specific designs available.

### SEQUESTR

External disconnect package that helps mitigate arc flash occurrences by isolating incoming power from the main enclosure. The disconnect switch and fuse block/circuit breaker are mounted in the external enclosure, with terminal connections to bring power to the main enclosure. The G2 version of Sequestr functions in an analogous sense to Hoffman's namesake Sequestr product, but is designed and manufactured on a full-height G2 frame to seamlessly integrate

### SOLID TOP

Used to close the top opening on an enclosure frame. Has a foam-in-place urethane gasket and two grounding studs. Bolts are included to hold the top in place (lifting eyes can be used instead of bolts). EMC options available.

### HIGH PERFORMANCE PAGODA EXHAUST VENT

Features an integral centrifugal blower mounted in a housing that includes a drip-proof removable hood, wire mesh finger guard, perimeter gasket and terminal block. EMC options available.

### PAGODA TOP

Features a drip-proof raised pagoda vent with an integral axial exhaust fan. Bolts secure pagoda top to frame (lifting eyes can be used instead of bolts).

### FULLY SEALED PLINTH BASE

Sealed plinth base with sealed side gland plates can be used at the base of the enclosure without a gland plate and maintain a Type 12 rating. Drill points for locating optional casters are included. Cable Entry Gland Plate option (not included) to provide an adjustable side cable opening with a dust-tight seal. EMC options available.

# Component Descriptions

## EXTERNAL COMPONENTS con't

---

### SOLID BASE

Cover for the base of an enclosure. EMC options available.

### PLINTH BASE

Provides space for cables to enter from the base. Consists of four cast aluminum corner supports connected to four 16 gauge steel access panels. A gland plate system must also be used to provide Type 12 protection.

### TRANSPORTATION BASE

Provides safe transportation for frames, from a single bay up to a max. of 3000mm (118.11 in.) in a multiple-bay system. Included fork lift provisions and a removable gland plate to allow cable access between bases.

### MOBILE BASE

Extends beyond the front and rear of the frame to provide enhanced stability. Fastens to the underside of the frame and provides integral mounting of furnished casters. The front and rear top surfaces of the base are trimmed with black rubber mats 3 mm thick. Four non-locking casters provide a load-bearing capacity of 1000 lb. (453.6 kg).

### DURO-STAND GLAND PLATE

Adjustable gland plates provide cable management solutions at the base of the enclosure while maintaining a NEMA 12 rating. Gland plate consists of 14 gauge (1.75 mm) thick plates designed to bear the weight of a person (200 lb/91 kg load rating), and two adjustable foam gasket plates to permit cable entry.

### CABLE ENTRY GLAND PLATE

Used with Fully-Sealed Plinth Base to provide an adjustable, foam-lined gland plate opening for cable entry to maintain a dust-tight seal. Can be used in place of standard solid side gland plates furnished with a Fully-Sealed Plinth Base.

### INTERNALLY MOUNTED GLAND PLATE

The internally mounted gland plate functions in a similar manner as the Duro-Stand Gland Plate: facilitating cable passage into an enclosure, while maintaining NEMA 12 environmental rating and maintaining the ability to support the weight of a person. Where the Internally Mounted Gland Plate differs is in installation: as the name indicates, the Internally Mounted Gland Plate is installed from inside the enclosure, securing to a series of brackets. This solution is great for applications where lifting capability is limited, or after enclosure population when access to the bottom of the enclosure is limited.

### VENTED GLAND PLATE

Used in conjunction with the Vented Plinth Base Covers to passively cool electronics within an enclosure, while maintaining the NEMA 12 rating. The Vented Gland Plate is constructed in a similar manner as the Duro-Stand Gland Plate, but in place of a number of the plates is an aluminum filter, or combination of filters, protected on the top and bottom by vented plates that facilitate air passage. Each gland plate solution has a single adjustable foam-gasketed gland that permits cable entry into the enclosure.

### FRAME FLOOR-MOUNTING BRACKET (INTERNAL)

Provides a structural method of bolting a frame, absent a base or gland plate, to the floor.

### FRAME FLOOR-MOUNTING BRACKET (EXTERNAL)

The External Frame Floor-Mounting Bracket Kit provides a convenient method to secure the enclosure to the floor. The jogged brackets mount between the base and the base securing bolts, and extend just beyond the edge of the enclosure.

### VENTED PLINTH BASE COVERS

The Vented Plinth Base Covers replace the traditional solid plinth base covers that mount width-wise across the front and rear of the enclosure. Vented covers allow air to enter the enclosure from below, and are used in conjunction with the Vented Gland Plate.

### PLINTH BASE MOUNTING BRACKET KIT

The Plinth Base Mounting Bracket Kit secures to the cast aluminum corner blocks of the standard Plinth Base. The bracket kit serves two functions: the first function is to facilitate floor mounting, and the second is to run a grid network for cable management.

### CASTERS, POST-TYPE

Set of four post-type casters (two locking, two non-locking) that mount directly to the bottom of a frame, solid base or fully sealed plinth base (do not use on other plinth bases.) Casters elevate the enclosure 110 mm (4.33 in.) when installed. A set of four casters supports a max. load of 454 kg (1000 lb.).

### CASTERS, REINFORCED PLATE-TYPE

The Plate Caster Kit consists of four polyamide casters (two locking and two non-locking) secured to formed-steel plates. The Plate Caster hardware secures the caster at the frame corners, and can be used with a bottom-mounted Gland Plate or a 0-mm Solid Base; they however do not work with Plinth Bases. Plate Casters can also be used on joined PROLINE G2 enclosures, with no caster swivel interference. Casters are rated to 3000 lbs. (1361 kg).

# Component Descriptions

## EXTERNAL COMPONENTS con't

---

### FLOOR STAND KIT

The Floor Stand Kit mounts depth-wise on the bottom of an enclosure, securing both through the frames drain hole(s) and the corner block(s). The Floor Stand Kit is used to elevate the enclosure off the ground by 300 mm (~1ft).

### LEVELERS

Four post-type levelers allow adjustment for uneven floors. Can be attached to the bottom of a frame or to a solid base.

### FLUSH SWING HANDLE

Ergonomically designed to provide style and function in a low-profile. Handle can be installed to rotate either clockwise or counterclockwise and can have a custom logo.

### FLUSH BEZEL HANDLE

Low-profile handle with tool-to-open operating mechanism. Screwdriver slot insert standard and can have a custom logo.

### L HANDLE

Stylish option with key lock and two keys. Can be installed to rotate either clockwise or counterclockwise and can have custom logo.

### KEY INSERTS

Used with flush bezels. Optional for any solid, window or disconnect door.

### DOOR STOP KIT

Holds doors open at 130 degrees. Mounts without drilling and includes all necessary mounting hardware.

### THERMOPLASTIC DATA POCKET

Provides a convenient place to store wiring diagrams, operation manuals and other documentation inside the enclosure. Adhesive backed pockets mount inside the solid enclosure cover.

### STEEL DATA POCKET

Fastens to the bottom of the door. Door Bar Grid Straps must be used to change the vertical mounting position.

### FOLDING SHELF (DOOR)

Mounts to door using the Door Bar Grid Straps. Locks in two positions—90 degrees as a shelf and 15 degrees as a writing surface. Also mounts to three-row grid straps, side or back panel, or any flat surface. Holds up to 30 Lbs.

### DOOR BAR GRID STRAPS

Used to mount accessories to the door. Holds up to 100 pounds. Set of two.

### LIFTING EYES

Used for lifting enclosure and fastening top accessories to frame. Thread into corner blocks in frame. Set of four.

### LIFTING ANGLES

Provides better load distribution while lifting two or three ganged enclosures. Spans the frame gap between ganged enclosures, securing into the corner blocks of adjacent frames. Set of two.

### LIFTING BARS

Designed for overhead lifting of 3-6 joined/ganged enclosures. Set of two.

### HOLE SEALS

Seals extra pushbutton holes, conduit openings and knockout openings against dust, dirt, oil and water. Includes oil-resistant gasket.

### TAMPERPROOF HARDWARE KITS

Designed to secure the side/rear cover(s), and reduce the risk of undesired entry into the enclosure. Commonly used on outdoor enclosures that may be susceptible to tampering, or simply to add a greater level of security and limit access to critical electronics. Screws are made from 18-8 stainless steel, and angled under the head to sit flush with the countersunk holes on the G2 covers. The driver bit is a hex-shank bit (insert bit) designed for use in hand drivers or in power tools with a standard bit adaptor.

### ANTI-TIP BRACKET

The Anti-Tip Bracket Kit secures the top of an enclosure to a fixed surface such as a wall, and protects against enclosure tipping. The kit comes with a single pair of brackets and mounting hardware to affix brackets to the enclosure.

### WALL-MOUNT BRACKET

The Wall Bracket Kit secures both the top and bottom of an enclosure to a fixed surface such as a wall. The same brackets are used in both the Anti-Tip and Wall Bracket kits. The Wall Bracket kit comes with two pairs of brackets and mounting hardware to affix brackets to the enclosure. The bracket kit is rated to 800 lbs. (363 kg).

# Component Descriptions

## INTERNAL COMPONENTS con't

---

### FULL SUBPANEL

Designed to provide maximum panel size and be easy to install. Includes EZ-Load Glide Blocks which accommodates five loading options: vertical front, vertical side, vertical rear, horizontal front (frame over subpanel), horizontal.

### PANEL SUPPORT BRACKET

Can be used to provide two additional attachment points for the mounting subpanel which is typically attached at the top and bottom of the modular enclosure frame. Recommended for heavy mounting subpanels.

### PARTIAL SUBPANEL

Partial subpanels can be positioned vertically in 25 mm increments. Can be positioned in 25 mm increments using the optional grid straps. If the mounting subpanel is not in the rearmost position, grid straps must be used. Standard or side-mount options. Painted or galvanized standard options.

### SWING-OUT SUBPANEL

Allows a front-mounted panel to pivot out of an enclosure frame opening. Spring-loaded pivot post allows for easy installation. Quarter-turn latches provided to secure the swing-out panel in the closed position. Painted or galvanized options.

### SIDE-MOUNT SUBPANEL

Side-mounted panels can be installed on the interior sides of frames. The panel and all the hardware needed to attach the subpanels to a frame are included. Painted or galvanized options.

### JOINING SUBPANEL

Provides a continuous panel surface in multiple-bay enclosures. The joining subpanel is inserted between full subpanels of equal height. It can be installed from front or rear. Holes for grounding and mounting hardware are provided. Painted or galvanized options.

### GRID STRAPS

Grid straps can be used to mount accessories or equipment and also to create an internal grid system to allow flexible mounting capabilities in height, width and depth. Can be mounted front-to-back horizontally across the bottom or sides of the frame; left-to-right horizontally between the sides of the frame or between a front-to-back set of grid straps; vertically between horizontally mounted grid straps. Available as single-piece or bracket-mount design in one or three row hole patterns. Set of two.

### VERTICAL GRID STRAPS

Provide a vertical extension of the frame holes in the sides of the frame. Set of two.

### 19" RACK ANGLES

Has two mounting surfaces that serve as mounts for both rack equipment and rack accessories. Can be mounted directly to the enclosure frame or on grid system straps at almost any depth location. Max. 20 lb. (9.1 kg) per rack unit for equipment under 20-inch (508 mm) deep. Set of two.

### ADJUSTABLE RACK-MOUNTING RAILS (PAIR)

Mounting rails allow rack angles to be positioned anywhere within the frame. Can be mounted across the width or depth. Set of two.

### FRAME REDUCING BRACKETS

Mounts directly to the frame or grid strap to reduce the frame width. Can also be used to left or right justify rack mount equipment. Set of four.

### HEAVY-DUTY SWING-OUT RACK FRAME

Allows 19-inch rack equipment to pivot for better accessibility. Spring-loaded pivot post makes installation easy. Complies with ANSI/EIA RS-310-D rack-mounting standards. Offset pivot point or center pivot point for higher loads. If center-pivot option is used.

### 170-DEGREE HINGE KIT

Used in conjunction with Heavy-Duty Swing-Out Rack Frame to provide increased accessibility to the back of rack equipment.

### FULL ACCESS RACK

The Full Access Rack is a design adaptation of the standard Heavy-Duty Swing-Out Rack Frame solution, serving a similar function but now allowing the rack frame to swing out of the enclosure for full access to 19-in. rack equipment. Depth adjustability up to 190mm (~7.5-in.) has also been built into the solution to accommodate equipment that extends forward beyond the rack frame. Left justified is the only standard configuration, and the minimum frame width must be 800mm to allow the rack frame to fully swing out of the enclosure. A filler panel with handle is included standard to occupy the space adjacent to the rack frame. The Full Access Rack has been rated to a load capacity of 300lb (136kg).

### STOP ARM KITS

Used in conjunction with Heavy-Duty Swing-Out Rack Frame to lock the rack frame in the open position. Note that 170-degree Stop Arm Kit can only be used when the 170-degree Hinge Kit is also installed.

# Component Descriptions

## INTERNAL COMPONENTS con't

---

### RACK PANELS

Available in aluminum and painted steel. All panels are flat with oblong holes positioned at EIA standard spacing.

### GROUND WIRE KIT

Allows a ProLine G2 enclosure to be grounded to VDE specifications. Includes six 12 gauge wires 411 mm (16.19 in.) with ring terminations and M6 mounting hardware.

### GROUND PLATE KIT

The Grounding Plate Kit effectively grounds covers to the frame. The kit consists of one bracket designed to ground the rear cover, a set of brackets to ground the top and side covers, and hardware to secure the brackets to the frame. Please note that if electrical devices are to be installed on the cover(s), grounding wires are required as defined in NFPA 79. It is recommended to use Grounding Kit PGK under these circumstances.

### BONDING STRAP

Bonding straps are a reliable and convenient grounding solution for applications that require flexibility and durability. The tinned copper ground braids with massivated palms come ready to install without any additional cutting, stripping, crimping or punching and do not require the addition of tin or crimped lugs. Bonding straps optimize the electrical contact between each wire and help eliminate moisture issues in the palms, preventing corrosion and lengthening the useful life of the braid.

### ADDITIONAL GROUNDING BAR SYSTEM

Copper plated grounding bars with M6 and M5 tapped holes provide a common point for grounding equipment. Includes insulated mounting brackets.

### LED LIGHT KIT

Provides interior enclosure lighting with options for screw mount (UL® compliant) or magnetic mount; AC or DC; on/off switch or motion sensor. Small form factor and low power consumption while providing 900 LM of 6500K light.

### REMOTE DOOR SWITCHES

Activates the light when the enclosure door is opened. Can be hard-wired to lights or switches. Includes mounting hardware.

### FRAME SHELF

Mounts to the vertical hole pattern on a frame and provides a stationary surface for equipment.

### INTERNAL BARRIER PANEL

The Internal Barrier Panel is designed to mount along the horizontal plane, similar to the Frame Shelf, and separate the enclosure into multiple bays along the vertical. The Internal Barrier Panel would commonly be used in a partial door enclosure solution.

### PULL-OUT SHELF

Allows easy access to shelf-mounted devices. Mounts to the front and rear frame uprights. Load rating is 110 lbs. (50 kg).

### RACK-ANGLE MOUNTED DRAWER

Steel drawer mounts to the front surface of 19-inch rack angles. Integral steel box contains the drawer and protects surrounding internal equipment.

### KEYBOARD COMPARTMENT

Self-contained, sealed module that mounts to an accessory front opening. PC keyboard rests on a ball-bearing glide shelf with a soft palm-rest. Seamless foam-in-place gasket on door assures a dust-tight seal.

### SUPPORT BRACKET KIT

Crosses the depth of the frame and can be used for additional support for heavy devices mounted on the sides or top.

### TRANSFORMER RAILS

Used to mount heavy components and transformers in the bottom of an enclosure. Slotted to fit the integral mounting holes in the frame.

### CENTER UPRIGHT

Center Uprights are vertical channels that attach to the frame at the top and bottom: frequently used in wider frames to facilitate installation of 19-in rack accessories.

# Component Descriptions

## CABLE MANAGEMENT SOLUTIONS

---

### **CABLE ENTRY CABINET**

Facilitate cable entry into the sides of enclosures. Open top and bottom of cabinet provide cable access and a means for managing cable. Closure plates, available as optional accessories, seal the open ends of the cabinet. Front opening of cabinet can be closed with either a hinged door or screw-on solid cover. Cabinets have a foam-in-place gasket to maintain environmental integrity.

### **TOP MOUNTING MODULE**

The Top Mounting Module installs to the top of an enclosure providing space for cable management, and facilitating cable passage into the enclosure from above. The module is constructed from a mini ProLine frame, and as such is joinable to accommodate multi-bay solutions. Removable covers are supplied with the module for sealing purposes, while the standard Solid Top (sold separately or included with Industrial Package) is used to enclose the solution as it is mounted to the top of the module.

### **VERTICAL TIE-DOWN CABLE MANAGER**

Provides mounting holes for D-Rings, spools, universal transition brackets and other accessories (order separately). Includes hardware for mounting to strut and ten VELCRO® cable wraps for fastening cable.

### **TIE-DOWN REDUCING BRACKET**

Provides convenient tie down for vertical or horizontal cable management. Allows front-to-back cable pass through. Supports optional D-Rings and wire management spools. Mounting hardware and ten VELCRO® cable wraps included.

### **BASKET TRAY**

Mounts horizontally left-to-right in the frame. Can be installed either at the bottom of the frame or to the mounting strut and can provide an internal cable runway in a row of cabinets. Large 51 x 102 mm (2 x 4 inch) mesh allows cable installers to route cables in or out at any point.

### **UNIVERSAL POWER STRIP BRACKET**

Fits in the corner of the frame and facilitates mounting a variety of power strips.

### **WIRE MANAGEMENT RAILS**

Features a unique hole pattern that allows either wire ties or fasteners to secure wires in place. Frame-mounting hardware is included. One package contains 20 rails.

### **UNIVERSAL D-RING BRACKET**

Mounts D-Ring (order separately) on Vertical Tie-Down Cable Manager, ProLine G2, Front-to-Back D-Ring Bracket or grid strap. D-Ring locks into hole provided.

### **VELCRO® CABLE WRAP**

Securely holds cable to cable manager and unfastens easily for cable maintenance. Sold in sets of ten.

### **FRAME TIE-DOWN BRACKET**

Provides an easy means to secure and bundle cables using any of the frame's rectangular holes. Can be positioned parallel or perpendicular to the frame and needs no tools to install—just push into any hole and twist to fasten. Proper bend radius is easily maintained with the flexible VELCRO® tie-down. Sold in sets of ten.

### **CABLE SPOOLS**

Spools maintain minimum cable radius, direct cable and can be used with rack angles, grid straps, or patch panels for general cable management. Sold in sets of ten.

### **STRUT CABLE RINGS**

Snaps into the strut. Can be positioned vertically or horizontally. Ring snaps open and closed to easily position cables. Can be drawn down to snugly bundle cables. Sold in sets of ten.

### **UNIVERSAL TRANSITION BRACKET**

Provides support for cable in transitions between horizontal and vertical routing. Mounts to strut, grid strap or Vertical Tie-Down Cable Managers. Can be used with VELCRO® Cable Wrap (order separately). Sold in sets of eight.

# Four Ways to Select Your ProLine G2



## **OPTION 1: STANDARD**

### **PROLINE G2 INDUSTRIAL PACKAGES**

ProLine G2 industrial packages are full-featured, ready-to-use enclosure solutions that make it unnecessary to order each component separately. The offering is rounded out by a large selection of off-the-shelf accessories.

- Reversible door

- Handle and key lock
- Top
- Rear cover
- Full subpanel
- Gland plate
- Lifting eyes



## **OPTION 2:**

TYPE 12 UL®/NEMA/CSA/EEMAC  
IP55 IEC/VDE

## **DESIGN YOUR STANDARD**

### **CONFIGURE FROM STANDARD PARTS**

Build your enclosure from the ground up using standard parts. Starting with the frame, select from the wide range of available tops, bases, covers, sides and doors as well as a large variety of accessories to configure the optimal solution for your needs.

## **OPTION 3: MODIFIED**

### **CONFIGURE FROM STANDARD PARTS + CUSTOM PAINT + HOLES/CUT-OUTS**

Need a specific paint color or custom holes or cut-outs? You can add these requirements to your standard configuration with only a small effect on your first-run delivery lead time.

## **OPTION 4: CUSTOM**

### **CONFIGURE FROM MODIFIED PARTS + CUSTOM PAINT + HOLES/CUT-OUTS**

Need something more unique? We will modify the standard ProLine G2 to fit your specific application needs. This option includes special dimensions, integrated ventilation or cooling components, custom-designed components or other unique requirements you may have. A strong engineering team and global manufacturing organization support this service across the globe.

## **FREE FACTORY ASSEMBLY**

Whether you need a standard, pre-configured enclosure or a custom solution, ProLine G2 enclosures can be assembled at the factory free of charge as part of nVent HOFFMAN's unique Assemble To Order program.

Save time and hassle by using this free service offering.

- Factory assembly by certified professionals
- Preconfigured or custom solutions
- No fee
- Fast delivery



## North America

Minneapolis, MN	Tel: +1.763.421.2240
Mexico City, Mexico	Tel: +52.55.5280.1449
Toronto, Canada	Tel: +1.416.289.2770

## South America

Sao Paulo, Brazil	Tel: +55.11.5184.2100
Boituva, Brazil	Tel: +55.15.3363.9148

## Europe

Betschdorf, France	Tel: +33.3.88.90.64.90
Straubenhardt, Germany	Tel: +49.7082.794.0
Dzierzoniow, Poland	Tel: +48.74.64.63.900
Lainate, Italy	Tel: +39.02.932.7141

## Middle East & India

Dubai, United Arab Emirates	Tel: +971.4.378.1700
Bangalore, India	Tel: +91.80.6715.2001

## Asia

Shanghai, P.R. China	Tel: +86.21.2412.6943
Singapore	Tel: +65.6768.5800
Shin-Yokohama, Japan	Tel: +81.45.476.0271
Seoul, Korea	Tel: +82.2.2129.7755
Qingdao	Tel: +86.532.8771.6101

Our powerful portfolio of brands:

**CADDY   ERICO   HOFFMAN   RAYCHEM   SCHROFF   TRACER**



[nVent.com/HOFFMAN](https://www.nVent.com/HOFFMAN)