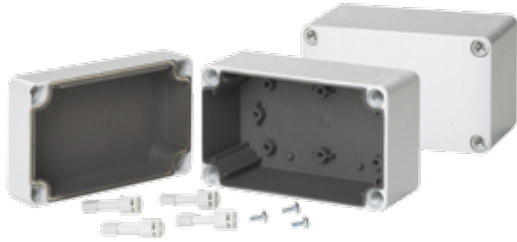


**QLINE E, EMC, TYPE 4X**



**INDUSTRY STANDARDS**

UL 508A Listed; Type 4, 4X, 12, 13; File No. E61997  
 cUL Listed per CSA C22.2 No 94: Type 4, 4X, 12, 13; File No. E61997  
 Enclosure flammability evaluated per UL 508A

NEMA/EEMAC Type 4, 4X, 12, 13  
 IEC 60529, IP66

**APPLICATION**

Medium-size QLINE E polycarbonate EMC enclosures have contoured bodies and flush cover screws for an attractive, contemporary appearance while also providing EMC protection in corrosive environments.

**SPECIFICATIONS**

- Body is impact-resistant polycarbonate
- EMC conductive coating in base and cover
- Gasket of silver/silicone
- Mounting holes molded directly under cover screws
- Screws provided for mounting optional panel
- Polycarbonate material is easily punched, drilled, filed or sawed
- Cross-point flush cover screws are strong, durable polyamide
- Mounting tracks along body side walls for PC card installation
- Molded internal pads for mounting optional panels, rails and other components

**FINISH**

Enclosure material is RAL 7035 light-gray outside. Optional panels are conductive steel.

**BULLETIN: Q41EM**

Standard Product

Catalog Number	AxBxC mm/in.	External Dimensions L x W mm/in.	Internal Dimensions A x B x C mm/in.	Panel	Panel Size D x E mm/in.	Mounting G x H mm/in.	F mm/in.	K mm/in.	P mm/in.	Q mm/in.	S mm/in.	T mm/in.	W mm/in.	X mm/in.
Q1388PCEMC	125 x 75 x 74 4.92 x 2.95 x 2.91	125 x 75 4.92 x 2.95	119 x 69 x 67 4.67 x 2.70 x 2.65	Q138PE	98 x 48 3.86 x 1.89	110 x 60 4.33 x 2.36	61 2.38	25 0.98	40 1.57	75 2.95	90 3.54	—	—	—
Q13138PCEMC	125 x 125 x 74 4.92 x 4.92 x 2.91	125 x 125 4.92 x 4.92	119 x 119 x 67 4.67 x 4.67 x 2.65	Q1313PE	98 x 98 3.86 x 3.86	110 x 110 4.33 x 4.33	61 2.38	25 0.98	90 3.54	75 2.95	90 3.54	—	23 0.89	—
Q131310PCEMC	125 x 125 x 99 4.90 x 4.90 x 3.90	125 x 125 4.92 x 4.92	119 x 119 x 92 4.67 x 4.67 x 3.64	Q1313PE	98 x 98 3.86 x 3.86	110 x 110 4.33 x 4.33	86 3.37	25 0.98	90 3.54	75 2.95	90 3.54	—	23 0.89	—
Q18138PCEMC	175 x 125 x 74 6.89 x 4.92 x 2.91	175 x 125 6.89 x 4.92	169 x 119 x 67 6.63 x 4.67 x 2.65	Q1813PE	148 x 98 5.83 x 3.86	160 x 110 6.30 x 4.33	61 2.38	25 0.98	90 3.54	100 3.94	140 5.51	15 0.59	23 0.89	—
Q181310PCEMC	175 x 125 x 99 6.89 x 4.92 x 3.90	175 x 125 6.89 x 4.92	169 x 119 x 92 6.63 x 4.67 x 3.64	Q1813PE	148 x 98 5.83 x 3.86	160 x 110 6.30 x 4.33	86 3.37	50 1.97	90 3.54	100 3.94	140 5.51	15 0.59	23 0.89	—
Q18188PCEMC	175 x 175 x 74 6.89 x 6.89 x 2.91	175 x 175 6.89 x 6.89	169 x 169 x 67 6.63 x 6.63 x 2.65	Q1818PE	148 x 148 5.83 x 5.83	160 x 160 6.30 x 6.30	61 2.38	25 0.98	140 5.51	125 4.92	140 5.51	—	15 0.59	35 1.38

Purchase panels separately.

