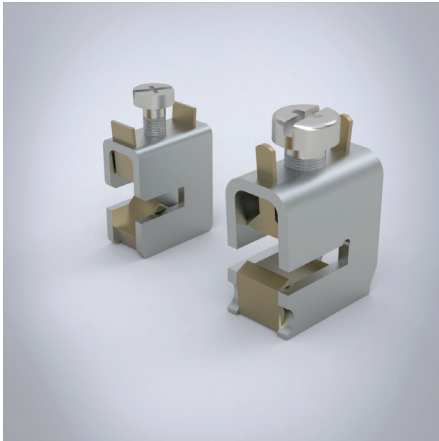


Universal connection terminal

Universal connection terminal



Description: Universal conductor terminal with integrated holding spring, a captive clamping screw, and open terminal space.

Rated voltage: 690 V

Approvals: CSA, UL, GL, DNV-GL

For use up to max.	Terminal space W × H (mm)	Connection min-max	For busbar	Pack quantity	Item no.
440 A	17 × 15	16 - 120 mm ²	flat busbars 5 mm	25 pcs.	01068
440 A	17 × 15	16 - 120 mm ²	flat busbars 10 mm	25 pcs.	01203
180 A	7.5 × 7.5	1.5 - 16 mm ²	flat busbars 5 mm	100 pcs.	01284
270 A	10.5 × 11	4 - 35 mm ²	flat busbars 5 mm	50 pcs.	01285
400 A	14 × 14	16 - 70 mm ²	flat busbars 5 mm	25 pcs.	01287
180 A	7.5 × 7.5	1.5 - 16 mm ²	flat busbars 10 mm	100 pcs.	01289
270 A	10.5 × 11	4 - 35 mm ²	flat busbars 10 mm	50 pcs.	01290
400 A	14 × 14	16 - 70 mm ²	flat busbars 10 mm	25 pcs.	01292