

nVent SCHROFF Rail Wallmount Enclosure



CONNECT AND PROTECT

Railway ready EN50125-3 vibration tested pole-mount stainless steel enclosure for integrated wayside radio, fiber splice, access point and power distribution applications



PRODUCT SPECIFICATION/TECHNICAL DATA

Material:	AISI 304L stainless steel (316L optional)
Finish:	RAL 7035 powder painting UV resistant.
Body:	Folded and seam welded 1.5 mm/16 gauge thick stainless steel structure, pre-equipped with M12 blind rivet nuts for wall and pole mounting.
Door:	Corner formed in one piece, 2 mm/14 gauge stainless steel door with 180° left opening with door stopper. Right opening doors available on request
Roof:	Rain & sun hood to protect against adverse weather conditions
Lock:	Swing handle with anti-vibration mechanism equipped with interchangeable DIN profile half cylinder lock and Espagnolette two points locking.
Cable access:	Gland plate on the bottom. Cut-outs can be requested based on project specific requirements.
Protection:	IP66; Up to NEMA Type 12; NEMA Type 13; NEMA Type 4X; IK10
Internal accessories:	Standard: Document Pocket A4 Optional: 19" uprights on the front, Mounting plate in the rear
External accessories:	Optional: Lifting eyes, wall/pole mount kits
Additional information:	For outdoor environments, the use of a pressure compensation breather is advised. Also in environments known for quick temperature changes, condensation should be taken into consideration. The standard enclosures are delivered with 2 pressure compensation breathers. One under the hood, one on the gland plate. The pressure compensation breathers are also IP66.

Mechanical mounted equipment:

- 19" brackets for 600mm wide cabinet
- Mounting panel on the rear
- Wall mount or pole mount kits
- Lifting eyes

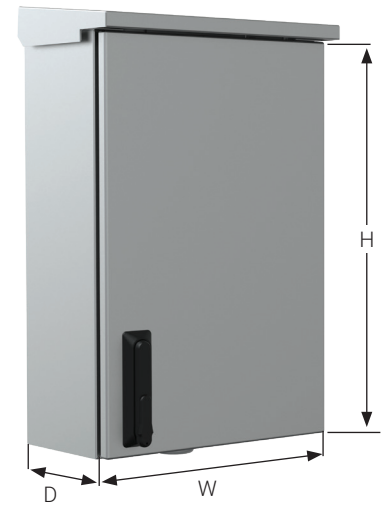
Electronic mounted equipment:

- Active cooling
- Power supply
- Pre-wired power distribution kits (PDU)
- Optical distribution box / Fiber splice cassettes
- LED lamps

COMPREHENSIVE SET OF STANDARD PREDEFINED CONFIGURATIONS

Dimension (H x W x D)	SKUs
600 x 400 x 210	SRW0604021
600 x 600 x 210	SRW0606021
600 x 600 x 300	SRW0606030
800 x 600 x 210	SRW0806021
800 x 600 x 300	SRW0806030

Broad range of standard cabinet dimensions added with elaborate integration capability, allow easy and fast project specific designs and reduced delivery times.



RAIN AND SUN PROTECTION



LIFTING HOOKS FOR EASE OF INSTALLATION

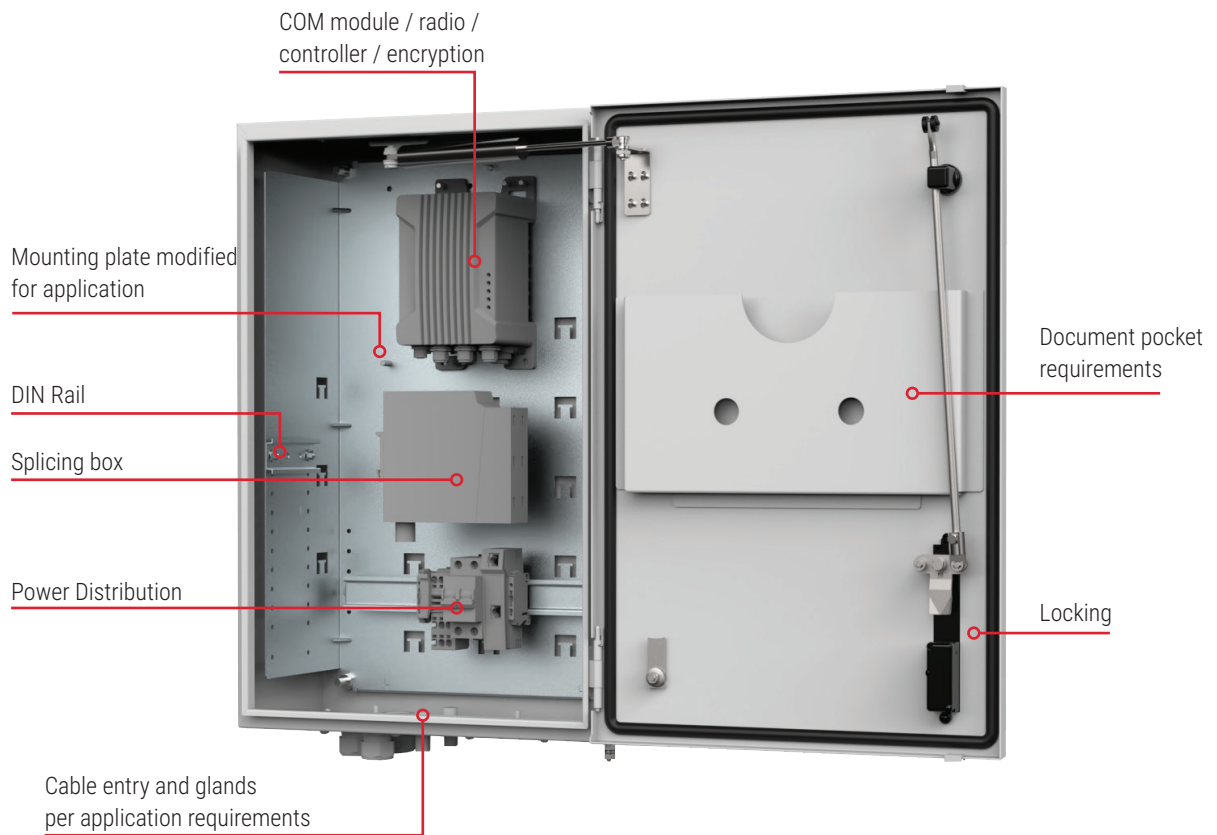
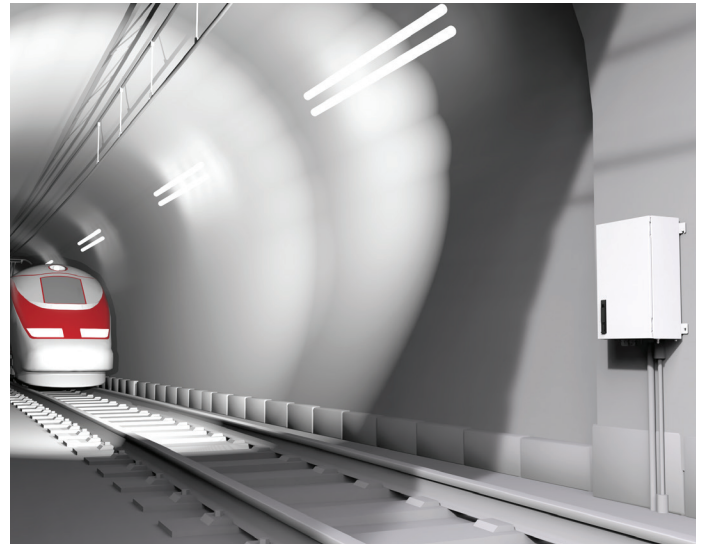


FLEXIBLE MOUNTING PER PROJECT REQUIREMENTS



Integrated Wayside Solution to Support Rail Digitalization

CBTC, ERTMS, radio and field element control applications require wallmount enclosures along the track.



Pre-configured and integrated at nVent facilities ready to ship to the installation site

Added services include:

Integration of project defined components at factory and shipped directly to the installation site:

- EMC protection
- Special grounding
- Specified radio
- Specialized cable management and entry
- Cyber secure access control and up to RC2 protection upon request

Services:

- Functional testing
- Thermal analysis
- Deliverables include 3D model, electrical schemes, etc.



Resiliency and Protection:

Our solutions add resiliency to critical systems by helping keep them safe from natural and manmade disruptions



Safety:

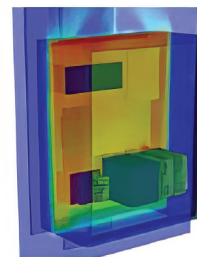
Our solutions improve end-user safety and help our customers enhance the safety of their operations.



19" DIN rail mounted subracks
integrated into wallmount enclosure



Passive or actively
cooled solutions



Thermal
analysis

North America

Tel +1.800.545.6258
Fax +1.800.527.5703
info@nVent.com

Europe, Middle East, Africa

Tel +32.16.213.511
Fax +32.16.213.603
info@nVent.com

Asia Pacific

Tel +86.21.2412.1688
Fax +86.21.5426.3167
info@nVent.com

Latin America

Tel +1.713.868.4800
Fax +1.713.868.2333
info@nVent.com



Our powerful portfolio of brands:

CADDY ERICO HOFFMAN RAYCHEM SCHROFF TRACER