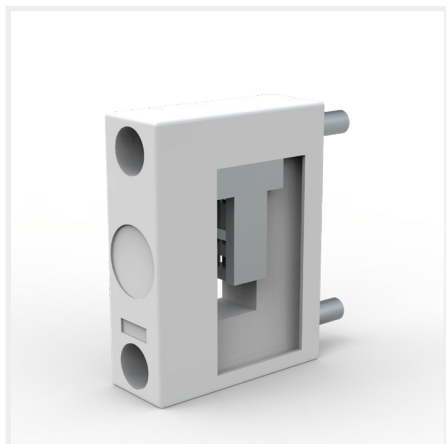


# PE/N Busbar Support

PE/N Busbar Support



**Description:** PE/N-support. Individually mountable. N-PE connection easy to make.

**Rated voltage:** 690 V

**Rated isolation voltage  $U_i$ :** 1000 V

**Rated surge voltage  $U_{imp}$ :** 6 kV

**Short circuit withstand:** 14 kA (max 400 mm distance between supports)

**Approvals:**

N° of Poles	Dimensions	For busbar	Pack quantity.	CatalogNumber
2	20 × 164 × 50	12, 15, 20, 25, 30 × 5, 11	10 pcs.	01356
1	20 × 65 × 50	12, 20, 30 × 5, 10	1 pcs.	01601