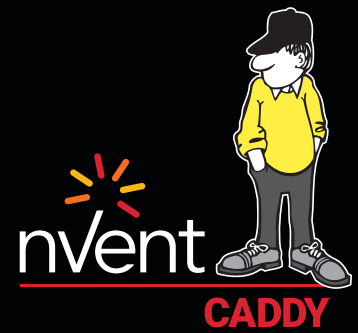


# Conduit Trapeze



## CONNECT AND PROTECT



The nVent CADDY Conduit Trapeze (CCT) is a fast and cost-effective method for installing a wide range of conduit in overhead trapeze installations. The CCT series eliminates the need for traditional fasteners, reducing installation time and material cost. The modular design makes it simple to expand and combine multiple sizes of conduit, making nVent CADDY Conduit Trapeze an ideal solution for contractors looking to maximize installation efficiency.

### FEATURES

- Ideal for both feeder and branch circuits
- Accommodates 1/2", 3/8" and 1/4" threaded rod trapeze drops
- Up to 25% material savings over traditional methods
- Reduces installation time up to 50%
- Complies with UL® 2239

Material: Steel | Finish: Pregalvanized

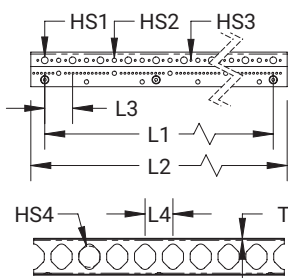


Part Number	Number of Conduits	Thickness T	Hole Size 1 HS1	Hole Size 2 HS2	Hole Size 3 HS3	Hole Size 4 HS4	Length 1 L1	Length 2 L2	Length 3 L3	Length 4 L4
<b>EMT Conduit Size: 1"   Rigid Conduit Size: 1"</b>										
CCT1X15	8	16 GA	7/16"	9/32"	1/8"	1 3/8"	14 1/2"	16 5/16"	1 13/16"	1 13/16"
CCT1X30	16	16 GA	7/16"	9/32"	1/8"	1 3/8"	29"	30 13/16"	1 13/16"	1 13/16"
CCT1X45	24	16 GA	7/16"	9/32"	1/8"	1 3/8"	43 1/2"	45 5/16"	1 13/16"	1 13/16"
CCT1X90	48	16 GA	7/16"	9/32"	1/8"	1 3/8"	87"	88 13/16"	1 13/16"	1 13/16"
<b>EMT Conduit Size: 1 1/4"   Rigid Conduit Size: 1 1/4"</b>										
CCT125X12	6	16 GA	7/16"	9/32"	1/8"	1 5/8"	12"	14"	2"	2"
CCT125X24	12	16 GA	7/16"	9/32"	1/8"	1 5/8"	24"	26"	2"	2"
CCT125X36	18	16 GA	7/16"	9/32"	1/8"	1 5/8"	36"	38"	2"	2"
CCT125X96	48	16 GA	7/16"	9/32"	1/8"	1 5/8"	96"	98"	2"	2"
<b>EMT Conduit Size: 2"   Rigid Conduit Size: 2"</b>										
CCT2X12	4	16 GA	9/16"	9/32"	1/8"	2 3/8"	12"	14"	3"	3"
CCT2X24	8	16 GA	9/16"	9/32"	1/8"	2 3/8"	24"	26"	3"	3"
CCT2X36	12	16 GA	9/16"	9/32"	1/8"	2 3/8"	36"	38"	3"	3"
CCT2X96	32	16 GA	9/16"	9/32"	1/8"	2 3/8"	96"	98"	3"	3"
<b>EMT Conduit Size: 4"   Rigid Conduit Size: 4"</b>										
CCT4X12	2	14 GA	9/16"	9/32"	1/8"	4 5/8"	12"	14"	6"	6"
CCT4X24	4	14 GA	9/16"	9/32"	1/8"	4 5/8"	24"	26"	6"	6"
CCT4X36	6	14 GA	9/16"	9/32"	1/8"	4 5/8"	36"	38"	6"	6"
CCT4X96	16	14 GA	9/16"	9/32"	1/8"	4 5/8"	96"	98"	6"	6"

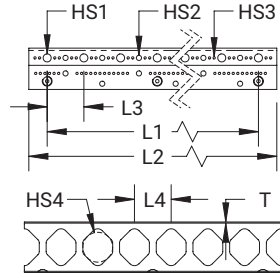
The table contains maximum conduit size values, smaller sizes are permissible.

UL Load Rating

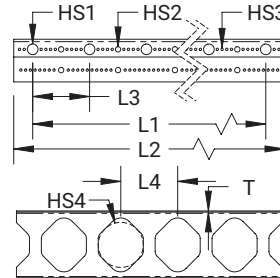
Conduit Range	Orientation	Mounting Fastener	Fastener Spacing							
			7.25"	14.5"	21.75"	29"	36.25"	43.5"	50.75"	
CCT1	Horizontal	3/8" Threaded Rod	500 lb	500 lb	400 lb	300 lb	266 lb	233 lb	200 lb	
		3/16" Shot-Fire Pin	150 lb	125 lb	-	-	-	-	-	
	Vertical	3/8" Fastener	600 lb	600 lb	-	-	-	-	-	
	<b>Evenly Distributed Load Rating</b>									
	Horizontal	3/8"	-	750 lb	600 lb	475 lb	425 lb	375 lb	300 lb	
For 3/8" and 1/4" threaded rod trapeze drops, use washer or SN25 for 1/4" threaded rod applications. The table contains maximum conduit size values.										
Conduit Range	Orientation	Mounting Fastener	Fastener Spacing							
			6"	12"	18"	24"	30"	36"	42"	48"
CCT125	Horizontal	3/8" Threaded Rod	500 lb	500 lb	400 lb	300 lb	275 lb	250 lb	225 lb	200 lb
		3/16" Shot-Fire Pin	150 lb	125 lb	100 lb	-	-	-	-	-
	Vertical	3/8" Fastener	600 lb	600 lb	-	-	-	-	-	-
	<b>Evenly Distributed Load Rating</b>									
	Horizontal	3/8"	-	750 lb	600 lb	475 lb	425 lb	375 lb	325 lb	300 lb
For 3/8" and 1/4" threaded rod trapeze drops, use washer or SN25 for 1/4" threaded rod applications. The table contains maximum conduit size values.										
Conduit Range	Orientation	Mounting Fastener	Fastener Spacing							
			6"	12"	18"	24"	30"	36"	42"	48"
CCT2	Horizontal	1/2" Threaded Rod	500 lb	500 lb	400 lb	300 lb	275 lb	250 lb	225 lb	200 lb
	Vertical	1/2" Fastener	600 lb	600 lb	-	-	-	-	-	-
	<b>Evenly Distributed Load Rating</b>									
	Horizontal	1/2"	-	720 lb	600 lb	475 lb	425 lb	375 lb	325 lb	300 lb
Conduit Range	Orientation	Mounting Fastener	Fastener Spacing							
			6"	12"	18"	24"	30"	36"	42"	48"
CCT4	Horizontal	1/2" Threaded Rod	600 lb	600 lb	550 lb	500 lb	475 lb	450 lb	425 lb	400 lb
	Vertical	1/2" Fastener	600 lb	600 lb	-	-	-	-	-	-
	<b>Evenly Distributed Load Rating</b>									
	Horizontal	1/2"	-	650 lb	600 lb	550 lb	525 lb	500 lb	475 lb	450 lb
The table contains maximum conduit size values.										



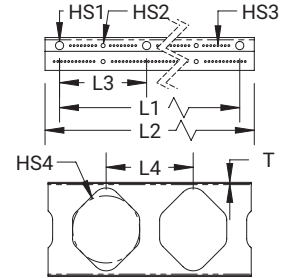
CCT1



CCT125



CCT2



CCT4



Our powerful portfolio of brands:

**CADDY ERICO HOFFMAN RAYCHEM SCHROFF TRACER**