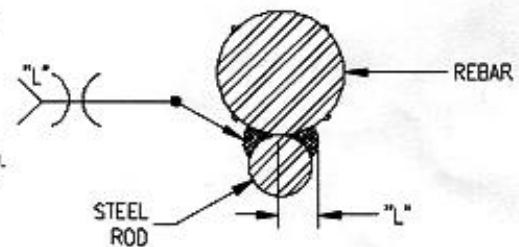
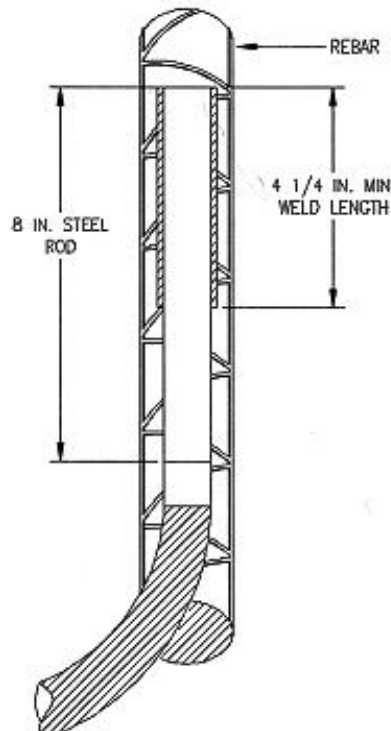
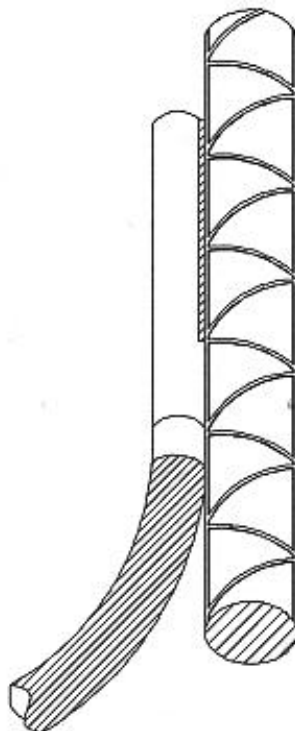
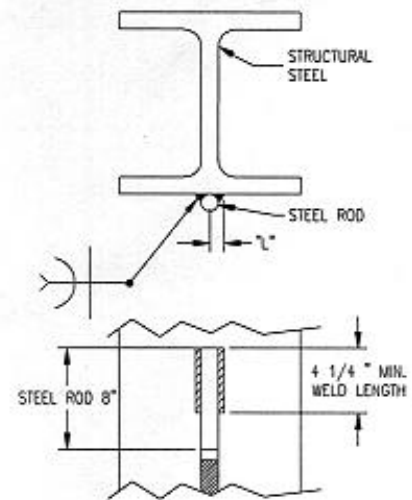
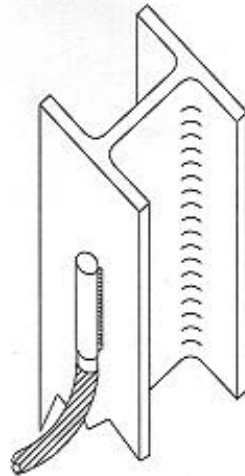


1. Clean surfaces to be welded with an abrasive wheel to remove any rust, oxidation or paint that would prevent a good electrical connection.

2. Surfaces must be clean, dry, and free of oil and grease prior to making the weld.

3. Refer to and follow the guidelines in the American National Standards Institute (ANSI) Z-49.1 Safety in Welding and Cutting.

4. Position Rod/Cable assembly and clamp for welding. Refer to the table below for minimum weld requirements.



| Cable ASSY P/N | ROD DIA | CU CBL | MIN WELD (L) |
|----------------|-----------|--------|--------------|
| EWB2G916'X' | 0.562 in. | 2/0 | 5/16 in. |
| EWB2L58'X' | 0.625 in. | 3/0 | 3/8 in. |
| EWB2Q34'X' | 0.750 in. | 4/0 | 7/16 in. |