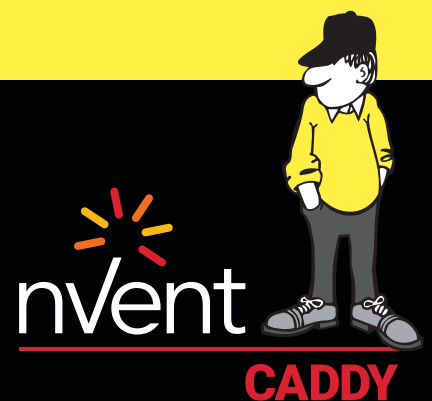




**CONNECT AND PROTECT**

nVent CADDY Cable  
Management Applications  
with Function Integrity



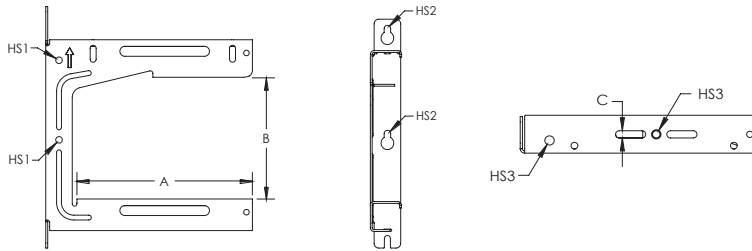
# Universal Tray Support

## FAST INSTALLATION OF CABLE TRAY WITH FUNCTION INTEGRITY



### FEATURES

- Universal design to accommodate various cable tray hanging methods including ceiling, wall, threaded rod, or cable hanging systems
- C-shape maintains accessibility to cables after installation is completed
- Strut profile on both arms allow for two runs of cable trays per bracket
- Top tab can be bent allowing for extra wide cable trays to be installed when two brackets are fastened back-to-back
- Key holes provided for wall mount applications
- Works with nVent CADDY KBT Wire Basket Tray Clip for securing wire basket cable tray and cable ladder use J-bolts



Installations with function integrity according DIN 4102-12 / MPA BS up to E90. Detailed information are available in the General Construction Supervisory Test Certificate abP P-MPA-E-17-008.

Material: Steel  
Finish: Electrogalvanized



Part Number	Article Number	A	B	C	Hole Size 1 HS1	Hole Size 2 HS2	Hole Size 3 HS3	Static Load 1 F1	Static Load 2 F2	Standard Packaging Quantity
UTS150	182031	165,1 mm	154,1 mm	8,3 mm	8,4 mm	8,4 mm	10,5 mm	440 N	890 N	20
UTS200	182032	223,9 mm	154,1 mm	8,3 mm	8,4 mm	9,0 mm	10,5 mm	440 N	890 N	20
UTS300	182033	323,2 mm	156,6 mm	8,3 mm	8,4 mm	8,4 mm	10,5 mm	440 N	890 N	10

Refer to Static Load 1 for installations with threaded rod.  
Refer to Static Load 2 for wall mount and 3 mm nVent CADDY Speed Link installations.

# Metal Pressure Clip






## FAST INSTALLATION OF CABLES WITH FUNCTION INTEGRITY



### FEATURES

- Use with Metal Pressure Clip to obtain E30 fire rating according to DIN 4102-12
- Ideal for smaller runs of cable
- Flexible clip retains shape and allows for cables to be inserted after installation
- Superior corrosion protection thanks to the nVent CADDY Armour finish

Material: Spring Steel  
Finish: nVent CADDY Armour

Product	Part Number	Article Number	Cable Capacity	Hole Size HS	Length	Standard Packaging Quantity
<b>Metal Pressure Clip – 10 Kabel</b>						
	PKM10H3	182044	10 x 10 mm	4,8 mm	171,5 mm	50
	PKM10H6	182045	10 x 10 mm	7,1 mm	171,5 mm	50
<b>Metal Pressure Clip – 16 Kabel</b>						
	PKM16H3	182046	16 x 10 mm	4,8 mm	233,5 mm	50
	PKM16H6	182047	16 x 10 mm	7,1 mm	233,5 mm	50
<b>Metal Insert for Function Integrity E 30*</b>						
	PKMINsert	182051		7,2 mm		50
<b>Metal Pressure Clip with Insert for Function Integrity E 30*</b>						
	PKM10H6IN	182048	10 x 10 mm	7,1 mm	171,5 mm	50
<b>Metal Pressure Clip with Insert for Function Integrity E 30*</b>						
	PKM16H6IN	182049	16 x 10 mm	7,1 mm	233,5 mm	50

\*abP P-MPA-E-17-008

# CAT HP J-Hook

## UNIVERSAL CABLE MANAGEMENT SYSTEM WITH FUNCTION INTEGRITY




### FEATURES

- Function integrity according to DIN 4102-12 / MPA BS
- Typically requires less time, labor and material for installation compared to cable tray systems
- Versatile solution thanks to the different sizes of the hooks very simple planning
- Can be quickly and easily installed by one person
- Ideal support for high-performance data cables, fibre optic and security cables

Material: Spring Steel  
Finish: Pregalvanized



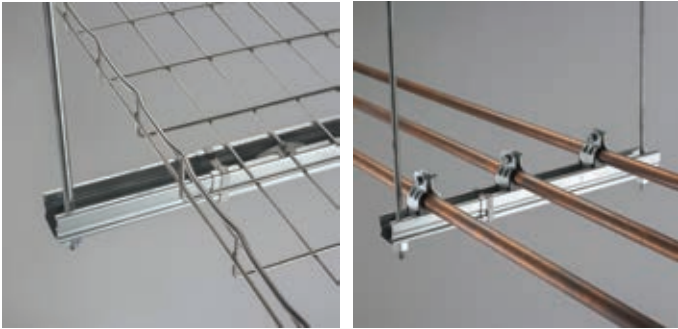
Product	Part Number	Article Number	Diameter Ø	Size	Max. Function Integrity	Standard Packaging Quantity
<b>Wall-Mount</b>						
	CAT16HP	181061	Ø 25 mm	6,3 mm Hole	E90*	50
	CAT32HP	181062	Ø 50 mm	6,3 mm Hole	E90*	50
	CAT48HP	181063	Ø 75 mm	6,3 mm Hole	E90*	50
	CAT64HP	181064	Ø 100 mm	6,3 mm Hole	E90*	50
<b>Ceiling-Mount</b>						
	CAT16HPAB	181209	Ø 25 mm	6,3 mm Hole	E90*	50
	CAT32HPAB	181211	Ø 50 mm	6,3 mm Hole	E90*	50
	CAT48HPAB	181212	Ø 75 mm	6,3 mm Hole	E90*	50
<b>Hammer-On</b>						
	CAT32HP24	181214	Ø 50 mm	3 - 8 mm Flange	E60*	50
	CAT48HP24	181215	Ø 75 mm	3 - 8 mm Flange	E60*	50
	CAT16HP58	181001	Ø 25 mm	8 - 14 mm Flange	E60*	50
	CAT32HP58	181002	Ø 50 mm	8 - 14 mm Flange	E60*	50
	CAT16HP24SM	181098	Ø 25 mm	3 - 8 mm Flange	E60*	50
	CAT32HP24SM	181099	Ø 50 mm	3 - 8 mm Flange	E60*	50
	CAT16HP58SM	181151	Ø 25 mm	8 - 14 mm Flange	E60*	50
	CAT48HP58SM	181157	Ø 75 mm	8 - 14 mm Flange	E60*	50
<b>Beam Clamp with Screw</b>						
	CAT16HPBC200B	181017	Ø 25 mm	max. 16 mm Flange	E60*	50
	CAT32HPBC200B	181018	Ø 50 mm	max. 16 mm Flange	E60*	50
	CAT48HPBC200B	181237	Ø 75 mm	max. 16 mm Flange	E60*	50
	CAT64HPBC200B	181019	Ø 100 mm	max. 16 mm Flange	E60*	50

\*abP P-3117/339/14-MPA BS



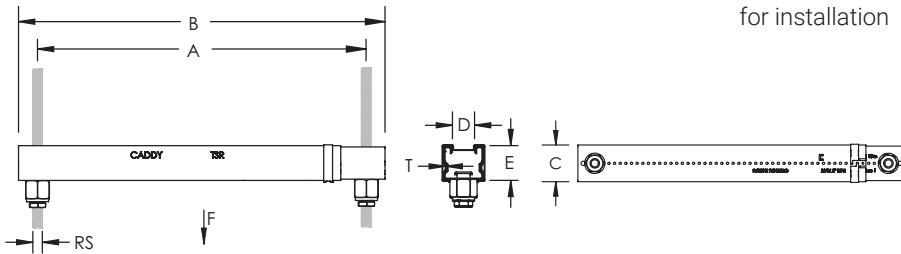
# nVent CADDY Rod Lock Telescoping Strut Replacement

## FAST INSTALLATION OF CABLE TRAY WITH FUNCTION INTEGRITY

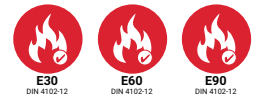


### FEATURES

- Easy "push-to-install" design allows installers to simply push the threaded rod through the mounting hole, instantly holding it in position
- Telescopes to the desired length and is locked in place by snapping closed a spring retainer clip
- Standard strut profile runs the entire length of the part, allowing most standard fittings to be placed anywhere between the rods
- Allows installers to prefabricate complex assemblies and quickly lift and lock them into place
- Lock nut can be finger tightened, locking the rod in place
- Allows for the quick creation, installation, and adjustment of multi-level trapeze assemblies
- Captive threaded nuts enable fastening to threaded rod supports without loose parts
- Integrated ruler displays space between hanger rods in inches and centimeters
- Supports up to seven 2" (50 DN) conduits, six 2" (50 DN) water filled pipes at 10' (3m) spacing, or up to 450mm cable tray
- Conduit can be supported on the top and bottom, eliminating the need for double sided strut
- Conduit and pipe can be placed directly on the strut profile, saving vertical space in buildings with limited room for installation



Material: Steel  
Finish: Pregalvanized



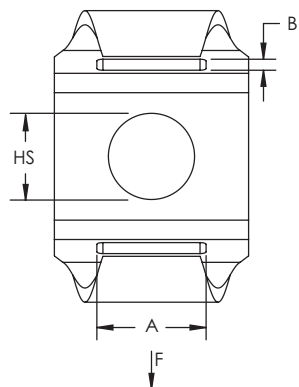
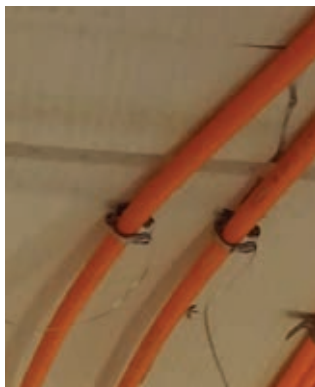
Part Number	Article Number	Rod Size RS	Thickness T	A	B	C	D	E	Static Load 1 F1	Static Load 2 F2	Certifications	Standard Packaging Quantity
TSR3050M10RL	390106	M10	1 mm	318–508 mm	356–546 mm	41 mm	22,2 mm	35 mm	1.330 N	880 N	E30, E60, E90*	20

Static Load 1 represents a distributed load for 12" - 20" (300 - 500 mm) installations and a Point Load for 12" - 16" (300 - 400 mm) installations.  
Static Load 2 represents a Point Load for 16" - 20" (400 - 500 mm) installations.

\*abP P-MPA-E-17-008

# Cable Tie Fastener



## FAST INSTALLATION OF CABLE WITH FUNCTION INTEGRITY



### FEATURES

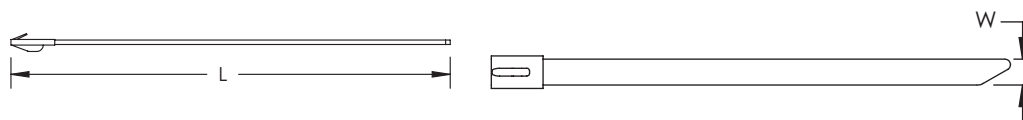
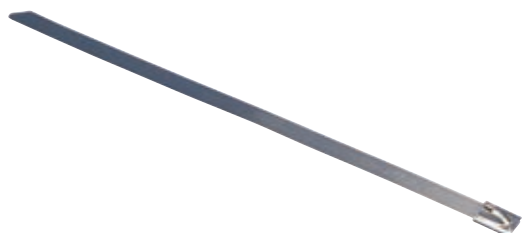
- Can be attached to various nVent CADDY fasteners or screwed directly to a wall or ceiling



Product	Part Number	Article Number	Hole Size HS	A	B	Static Load F	Certifications	Standard Packaging Quantity
Material: Spring Steel; Finish: nVent CADDY Armour								
	CT	170450	8 mm	9 mm	2 mm	40 N	E90*	100
Material: Stainless Steel 301 (EN 1.4310)								
	CTS1	171600	8 mm	9 mm	2 mm	40 N	E90*	100

\*abP P-MPA-E-17-008

# Cable Tie, Stainless Steel



### FEATURES

- Secures low voltage cable



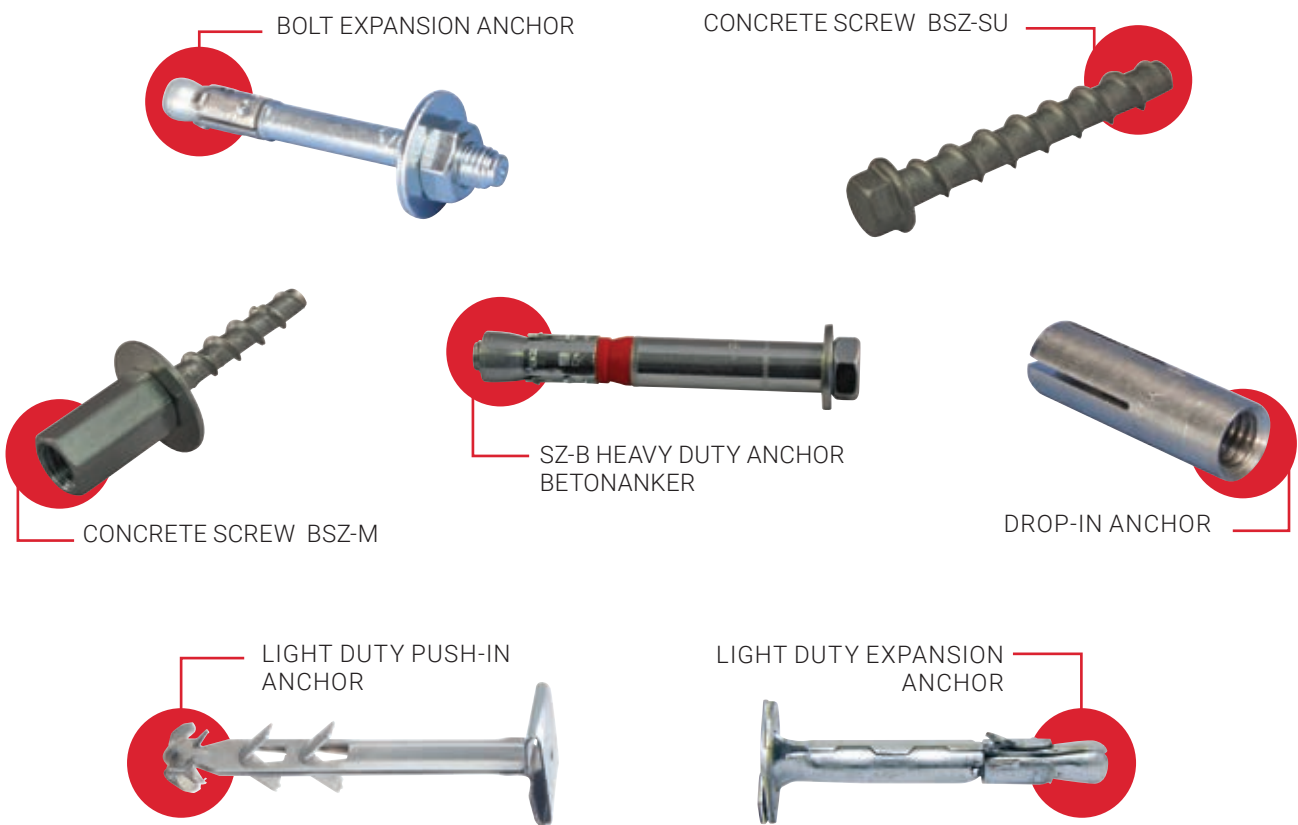
Material: Stainless Steel 316 (EN 1.4401)

Part Number	Article Number	Length L	Width W	Standard Packaging Quantity
MLT2HS6	188100	200 mm	7,9 mm	100



Pictures of the fire chamber including UTS, PKM, CT & Rod Lock Telescoping Strut Replacement before the fire test

For a complete installation in compliance with DIN 4102-12 it is required to use fire-rated fixings made from steel together with the supports. The nVent CADDY product portfolio offers a wide range of anchors suitable for fire integrity applications:



Our powerful portfolio of brands:

**CADDY ERICO HOFFMAN RAYCHEM SCHROFF TRACER**



[nVent.com/CADDY](https://www.nvent.com/CADDY)