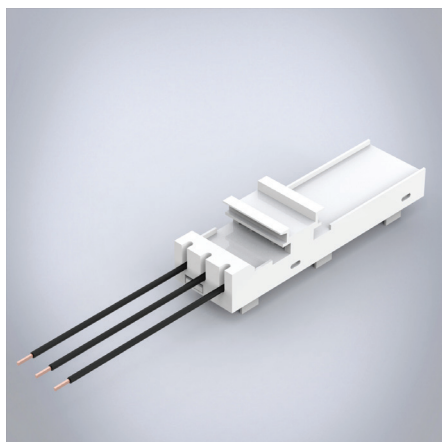


# CrossBoard Adapter Basic

CrossBoard Adapter Basic



**Description:** 3 pole adapter. One fixed mounting rail. For compact mounting of complete motor circuits.

**Rated voltage:** 690 V

**Dimensions:** 45 x 160 x 45 mm

**Pack quantity:** 1 pc.

**Approvals:** IEC, UL

Cable diameter (mm)	Rated current	Item no.
2.5 mm <sup>2</sup>	16 A	32666
6 mm <sup>2</sup>	32 A	32682