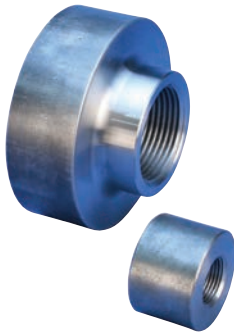


nVent LENTON D6 Mechanical Anchor, Plain

Taper-Threaded Terminator



FEATURES

- Replaces conventional hooked reinforcing bar
- Simplifies reinforcing bar placement and lowers placing costs
- Head area exceeds 5x bar area (net 4x)

Material: Steel
Finish: Plain

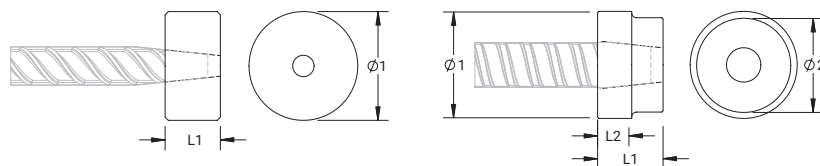


Part Number	Rebar Size US	Rebar Size Canada	Diameter 1 Ø1	Diameter 2 Ø2	Length 1 L1	Length 2 L2	Unit Weight	Certifications
EL12D6	#4	10M	1.38"	–	0.56"	–	0.2 lb	IAPMO®-UES
EL16D6	#5	15M	1.50"	–	0.88"	–	0.5 lb	IAPMO®-UES
EL20D6	#6	20M	1.88"	–	1.13"	–	0.8 lb	IAPMO®-UES
EL22D6	#7	–	2"	–	1.25"	–	0.9 lb	IAPMO®-UES
EL25D6	#8	25M	2.25"	–	1.38"	–	1.49 lb	IAPMO®-UES
EL28D6	#9	30M	2.75"	–	1.50"	–	1.87 lb	IAPMO®-UES
EL32D6	#10	–	3"	–	1.56"	–	2.6 lb	IAPMO®-UES
EL36D6	#11	35M	3.25"	–	1.69"	–	3.1 lb	IAPMO®-UES
EL38D6	#12	–	3.50"	3.15"	1.75"	0.75"	3.99 lb	–
EL40D6	–	–	3.75"	3.15"	2.17"	1.17"	3.99 lb	IAPMO®-UES
EL43TD6	#14	45M	4"	3.15"	2.13"	1.13"	5.1 lb	IAPMO®-UES
EL57TD6	#18	55M	5.13"	3.15"	2.75"	1.75"	10.1 lb	IAPMO®-UES

Designed to Meet: ACI 318;AS3600; ASTM A970

Bar dimensions and weights listed may vary by region. Coupler sizes not shown may be available by special order. Contact your nVent LENTON representative for more information.

Thread does not need to be flush with end of nVent LENTON Terminator. Thread may be +/- 2 threads from backside of coupler.



Our powerful portfolio of brands:

CADDY ERICO HOFFMAN ILSCO RAYCHEM SCHROFF