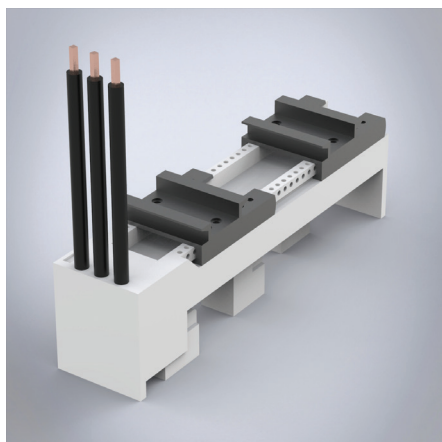


# Busbar adapter, 32A with cables

Busbar adapter, 32A with cables



**Description:** Busbar adapter, 32 A. With cables 6 mm<sup>2</sup>. Adapted to the breaker manufacturer's design.

**Rated voltage:** 690 V

**Rated current:** 32 A

**For busbars:** 12, 15, 20, 25, 30 × 5, 10

**Power dissipation at 80% load:** 1,6 W

**Width:** 45 mm

**Pack quantity:** 1 pc.

**Approvals:** GL

Type	Item no.
For direct starter Schneider Electric LUB12/32	32427
For direct starter Schneider Electric GV2-M/P	32434
For direct starter ABB MS116/132	32498
For direct starter Siemens S0 with screw connection	32639