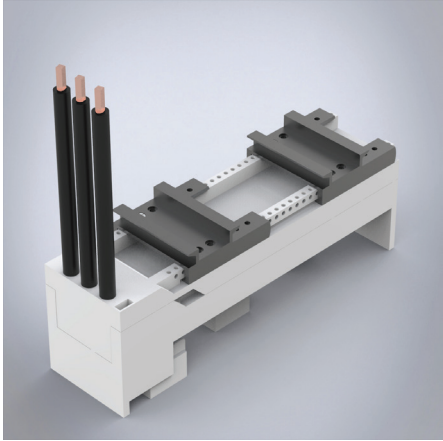


Busbar adapter 32A, with cables and 2 mount-

Busbar adapter 32A, with cables



Description: Busbar adapter 32 A. With two adjustable mounting rails. With removable upper section and leads (6 mm²).

Rated voltage: 690 V

Rated current: 32 A

For busbars: 12, 15, 20, 25, 30 × 5, 10

Power dissipation at 80% load: 2.2 W

Poles: 3-pole

Dimensions: 54 × 200 × 75 mm

Pack quantity: 1 pc.

Approvals: CSA, UL, GL

Item no.
32404