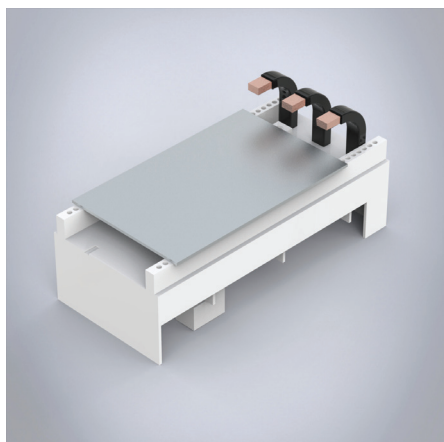


# Busbar adapter 160A

Busbar adapter 160A



**Description:** 3-pole busbar adapter 160 A, adapted to the component manufacturer's design.

**Rated voltage:** 690 V

**For busbars:** 12, 15, 20, 25, 30 × 5, 10

**Power dissipation at 80% load:** 7.7 W

**Pack quantity:** 1 pc.

**Approvals:**

Width	Type	Rated current	Item no.
90	For ABB T-max T1, XT1,T2,XT2,GE FD160, Schneider el.NS80, NSX80, top connection to the system	160 A	32575
76	For Siemens 3VA10,11 and 3VT160, top connection to the system	144 A	32660