



**CONNECT AND PROTECT**

# Wall-Mount Solutions

Datacom and Networking

  
**nvent**

**HOFFMAN**

# Protect Your Electronics Investment

## WITH THE INDUSTRY'S WIDEST ARRAY OF WALL-MOUNT SOLUTIONS

Information  
Technology  
TODAY must go  
everywhere the  
work is—including  
tight spaces,  
high traffic areas  
and challenging  
environments

### NVENT'S HOFFMAN BRAND WALL-MOUNT CABINETS AND RACKS LET YOU DEPLOY IT EQUIPMENT WHERE IT'S NEEDED

Ever-expanding IT and communication requirements demand remote equipment solutions in places where they never existed. From network switches in a school to multiple distributed networks on the factory floor, virtually every enterprise and institution faces the challenge of integrating essential electronics into less than ideal spaces, locations and environments. Wall-mount cabinets and racking solutions from nVent HOFFMAN meet today's diverse network and control challenges with secure accessibility and robust protection for application requirements as varied as:

- Indoors or outdoors; NEMA, UL and CSA-rated cabinets and OSP solutions
- Tight spaces with limited access and airflow such as closets
- High-traffic and production areas that present potential equipment damage or tampering dangers
- Sanitary washdown environments
- Small networks, wireless access points and sensitive 19" rack mounted equipment
- High ambient temperatures
- Distributed networks, controls and enterprise systems; remote servers and intermediate distribution frames
- Building systems including HVAC, automation and security systems
- Audio/Visual, telecommunications, VOIP and office-to-plant communications and monitoring
- Weather extremes including rain, sleet, snow and ice
- Corrosive environments
- Harsh factory automation environments

### UNIQUELY QUALIFIED TO PROTECT CRITICAL ELECTRONICS IN THE MOST CHALLENGING ENVIRONMENTS

As connectivity and networks have migrated from centralized, condition-controlled data centers to the harsh conditions of the real world in distributed networks, stand-alone and wireless applications, HOFFMAN has led the way for over 60 years. After all, we invented the industrial enclosure. And if we can protect equipment in the world's toughest conditions, HOFFMAN can handle your challenge too. No one has more expertise protecting the equipment infrastructure and connectivity of virtually every type of application—from remote ocean oil rigs to the largest of data centers for cloud-based networks.

Simply put, HOFFMAN offers the industry's widest array of wall-mount cabinets, accessories and modification options. We are also one of the leading industry experts on cooling and thermal management, an essential consideration for increasingly powerful and densely-populated remote devices in uncontrolled environments. HOFFMAN has the solutions for complete environmental control of your equipment, isolating and securing vital devices and connections from demanding environmental conditions to ensure optimal levels of performance and operational life.







IF YOU FIND YOURSELF  
IN A TIGHT SPOT, HOFFMAN  
BRAND WALL-MOUNT  
ENCLOSURES ARE  
YOUR SOLUTION

## Wall-Mount Solutions

### DATACOM & NETWORKING

#### PROTEK SERIES

Type 1, 4, 4X and 12 Single-Door and Hinged-Door Cabinets..... **4**

#### WALL-MOUNT RACKS AND SPECIALTY CABINETS

L-Box and D-Box Cabinets, 19-inch Rack Solutions..... **8**

#### ACCESSPLUS

Type 1 Double-Hinged Cabinets ..... **10**

#### COMPOSITE WIFI CABINETS

Type 4X UltrX Fiberglass and PolyPro Polyester Cabinets..... **11**

#### ALUMINUM OSP CABINETS

Outdoor Aluminum Wall- and Pole-Mount Cabinet Packages ..... **12**

#### WALL-MOUNT CABINET SELECTION MATRIX

Compare Features, Options and Accessories..... **13**

#### UL AND NEMA RATINGS CERTIFY LEVELS OF PROTECTION

HOFFMAN is one of the only network and data cabinet suppliers that designs and tests cabinets to meet the requirements of Underwriters Laboratories.

UL, an independent organization, provides strict design parameters and defined telecommunications equipment testing and technology protection solutions to ensure proper performance. Using UL Listed products ensures consistent performance in protecting sensitive devices and equipment. In addition, most HOFFMAN cabinets are tested and certified to meet international standards including IEC and CSA.

Consult your HOFFMAN sales representative for further information on applying these ratings to your installation or visit our online resources at [nVentprotect.com](http://nVentprotect.com)

See page 14 for enclosure ratings reference guide



# ProTek Series

## WALL-MOUNT CABINETS

### EXTREME PROTECTION FOR PUNISHING ENVIRONMENTS

---

ProTek cabinets offer robust protection against water, dirt, corrosive agents and other contaminants, as well as industrial environmental challenges including high temperatures, impact and security requirements.

Use versatile ProTek cabinets in applications ranging from industrial controls and computers, HMI, enterprise systems, remote networking equipment, distributed controls, production monitoring systems, wireless access points, building automation and HVAC, security, audio-video systems, telecommunications and more. ProTek comes in a broad range of sizes, materials and configurations, plus options to meet the most extreme applications.



### FEATURES

---

- Complete off-the-shelf packages with one part number to meet your application
- Versatile configurations in single-door and high-accessibility double-hinged models
- Solid door or window door models for complete protection with visual monitoring option
- Plated, adjustable RU marked for 19" EIA rack mounting
- UL and CSA rated Type 1, 3R, 4, 4X or 12 models
- Choice of mild steel or stainless steel models to meet your application
- Integral cooling with low profile filter fan and A/C packages

### PROTEK SINGLE-DOOR WALL-MOUNT CABINETS TYPE 4 AND TYPE 12 – NEMA RATED

---

Select these wall-mount cabinets to protect 19" network equipment from dirt, splashing water, dust and other contaminants. Both solid door and window door models are plenum rated.

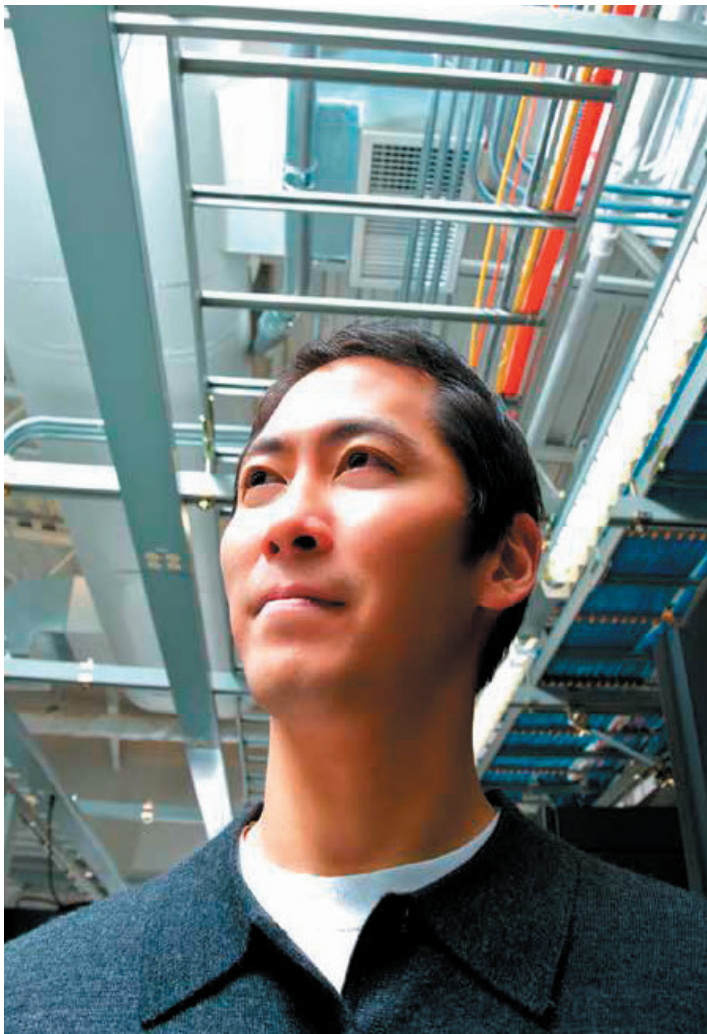
### PROTEK DOUBLE-HINGED WALL-MOUNT CABINETS TYPE 4 AND TYPE 12 – NEMA RATED

---

ProTek double-hinged cabinets offer enhanced accessibility to components with provisions for rack mounting in front and panel mounting in back. Exclusive tool-less self-fastening latch is easy to open, yet automatically closes securely.







## PROTEK CABINETS

- Precision-engineered, quality-welded construction
- Durable 14- and 16-gauge mild steel construction with painted RAL 7025 gray powder coat finish; stainless steel models also available
- Seamless foam-in-place gasket seals out contaminants (a)
- Symmetrical door hinges offer left or right door mounting
- Self-captivated and retained hinge pins with tool-free removal
- M6 ground studs in door and body
- Tapped adjustable rack angles included
- RU-marked 19" EIA universal spacing with tapped 10-32 holes; optional square hole (.375 in.) rack angles available for equipment mounting flexibility (b)
- Wood or steel mounting panels include tie-down points and pre-drilled holes
- Key-lockable quarter-turn wing knob (c)
- Window models feature .25" safety glass for greater clarity, strength and scratch resistance than plexiglass
- RoHS compliant

### PROTEK SINGLE-DOOR WALL-MOUNT CABINET

UL and NEMA Type 4 or 12, IP66 or IP55

Solid Door	Window Door	Nominal (In.)	RU
PTRS242412G4	PTRW242412G2	24 x 24 x 12	12
PTRS242424G4	PTRW242424G2	24 x 24 x 24	12
PTRS362412G4	PTRW362412G2	36 x 24 x 12	19
PTRS362424G4	PTRW362424G2	36 x 24 x 24	19
PTRS482412G4	PTRW482412G2	48 x 24 x 12	26
PTRS482424G4	PTRW482424G2	48 x 24 x 24	26

A



B



C



### PROTEK SINGLE-DOOR WALL-MOUNT CABINET

UL and NEMA Type 4 or 12, IP66 or IP55

Solid Door	Window Door	Nominal (In.)	RU
PTHS162415G4	PTHW162415G2	16 x 24 x 15	7
PTHS242415G4	PTHW242415G2	24 x 24 x 15	12
PTHS242424G4	PTHW242424G2	24 x 24 x 15	12
PTHS242436G4	PTHW242426G2	24 x 24 x 26	12
PTHS242836G4	PTHW242836G2	24 x 28 x 36	12
PTHS362415G4	PTHW362415G2	36 x 24 x 15	19
PTHS362424G4	PTHW362424G2	36 x 24 x 24	19
PTHS362436G4	PTHW362436G2	36 x 24 x 36	19
PTHS362836G4	PTHW362836G2	36 x 28 x 36	19
PTHS482415G4	PTHW482415G2	48 x 24 x 15	26
PTHS482424G4	PTHW482424G2	48 x 24 x 24	26
PTHS602415G4	PTHW602415G2	60 x 24 x 15	32
PTHS602424G4	PTHW602424G2	60 x 24 x 24	32
PTHS482436G4	PTHW482836G2	48 x 28 x 36	36

# ProTek Series

## THERMAL PACKAGES

### PROTEK WALL-MOUNT CABINETS WITH INTEGRATED FAN OR A/C

#### TYPE 1, 3R, 4 AND TYPE 12 – NEMA RATED

ProTek wall-mount cabinets are available with integrated thermal management using either a fan and filter combination or air conditioner to control internal temperatures while protecting sensitive 19" rack equipment from water and harmful environmental contaminants. Type 1 fan and filter models offer up to 272 CFM of cooling while protecting against falling dirt, dust and other debris. Type 4 and 12 air-conditioned models offer superior protection from ingress of dirt, circulating dust and dripping water.

For superior outdoor protection against dirt and debris plus protection from the effects of weather (rain, sleet, snow and ice formation) choose ProTek Type 3R cabinets. All models are preconfigured packages, available in single- or double-hinged solid or scratch-resistant window door models and require no additional layout, drilling or sawing to accommodate thermal devices.



#### PROTEK FAN & FILTER PACKAGES TYPE 1

- 272 CFM cooling on 24" deep single-door and double-hinged models
- Serviceable filter with easy access
- Fans and intake filters are positioned away from 19" rack-mounting areas

#### PROTEK OUTDOOR CABINETS TYPE 3R

- 113 CFM cooling on 12" deep models; 272 CFM cooling on 24" deep single-door and double-hinged models
- Solar shield and fan shroud
- UL Type 3R certification ensures reliable protection against water ingress

#### PROTEK AIR CONDITIONED PACKAGES TYPE 4 AND 12

- Complete packages for demanding indoor or outdoor applications
- Type 4 & 12 (solid door) or Type 12 (window door – indoor only)
- Integrated T15 air conditioner delivers 235 watts (800 BTUs) of cooling
- 115 VAC with standard 5-15P NEMA plug

#### PROTEK SINGLE-DOOR WINDOW FAN PACKAGE

UL Type 1, IP30	Nominal (In.)	RU
PTRW242424GF	24 x 24 x 24	12
PTRW362424GF	36 x 24 x 24	19
PTRW482424GF	48 x 24 x 24	26

#### PROTEK SINGLE SOLID DOOR TYPE 3R

UL Type 1, IP30	Nominal (In.)	RU
PTRS242412G3	24 x 24 x 12	12
PTRS242424G3	36 x 24 x 24	12
PTRS362412G3	36 x 24 x 12	19
PTRS362424G3	36 x 24 x 24	19
PTRS482412G3	48 x 24 x 12	26
PTRS482424G3	48 x 24 x 24	26

#### PROTEK SINGLE SOLID DOOR AC PACKAGE UL AND NEMA TYPE 4 OR 12, IP66

Solid Door	Window Door	Nominal (In.)	RU
PTRS242424G4A	PTRW242424G2A	24 x 4 x 24	12
TRS362424G4A	PTRW362424G2A	36 x 24 x 24	19
PTRS482424G4A	PTRW482424G2A	48 x 24 x 24	26

#### PROTEK DOUBLE-HINGED FAN PACKAGE

UL Type 1, IP30	Nominal (In.)	RU
PTHW242424GF	24 x 24 x 12	12
PTHW362424GF	36 x 24 x 24	19
PTHW482424GF	48 x 24 x 24	16

#### PROTEK DOUBLE-HINGED TYPE 3R

UL Type 1, IP30	Nominal (In.)	RU
PTHS242424G3	24 x 24 x 12	12
PTHS362424G3	36 x 24 x 24	19
PTHS482424G3	48 x 24 x 24	26

#### PROTEK DOUBLE-HINGED AC PACKAGE UL AND NEMA TYPE 4 OR 12, IP66

Solid Door	Window Door	Nominal (In.)	RU
PTHS242428G4A	PTHW242428G2A	24 x 24 x 29	12
PTHS362424G4A	PTHW362428G2A	36 x 24 x 29	19
PTHS482428G4A	PTHW482428G2A	48 x 24 x 29	26

# ProTek Series

## STAINLESS STEEL CABINETS

### PROTEK STAINLESS STEEL WALL-MOUNT CABINETS

#### TYPE 4X – NEMA RATED

Ideal for protecting remote 19" network equipment in corrosive environments, or in sanitary washdown applications, ProTek stainless steel wall-mount cabinet models deliver NEMA/UL Type 4X performance. ProTek stainless steel cabinets offer sealed protection against ingress of dirt, circulating dust and debris, the effects of weather (rain, sleet, snow and ice formation), ingress of water from dripping, splashing or hose-directed washdown and the enhanced corrosion protection of Type 304 stainless steel construction.

Available in both solid single-door and solid double-hinged door models, with or without air conditioning, ProTek stainless steel cabinets are a superior choice for network equipment, devices and controls in food and beverage processing, pharmaceutical manufacturing and a myriad of applications in demanding indoor and outdoor environments including petrochemical processing and telecommunications.



### PROTEK STAINLESS STEEL CABINETS TYPE 4X

- Complete packages for corrosive and washdown applications with high ambient temperatures
- Solid single-door and window double-hinged door models with Type 4X certification for use indoors or out
- Precision-welded Type 304 stainless steel with smooth grain finish



### PROTEK STAINLESS STEEL AIR CONDITIONED PACKAGES TYPE 4X

- Complete packages for corrosive and washdown applications with high ambient temperatures
- Solid single-door and window double-hinged door models with Type 4X certification for use indoors or out
- Integrated T15 air conditioner delivers 235 watts (800 BTUs) of cooling
- 115 VAC with standard 5-15P NEMA plug

#### PROTEK SINGLE SOLID DOOR STAINLESS STEEL

UL Type 4X, IP66	Nominal (In.)	RU
PTRS242412X	24 x 24 x 12	12
PTRS242424X	24 x 24 x 24	12
PTRS362412X	36 x 24 x 12	19
PTRS362424X	36 x 24 x 24	19
PTRS482412X	48 x 24 x 12	26
PTRS482424X	48 x 24 x 24	26

#### PROTEK SINGLE SOLID DOOR STAINLESS STEEL

UL Type 4X, IP66	Nominal (In.)	RU
PTHS242415X	24 x 24 x 15	12
PTHS242424X	24 x 24 x 24	12
PTRS482436X	24 x 24 x 36	12
PTHS362415X	36 x 24 x 15	19
PTHS362424X	36 x 24 x 24	19
PTRS482436X	36 x 24 x 36	19
PTHS482415X	48 x 24 x 15	26
PTHS482424X	48 x 24 x 24	26

#### PROTEK SINGLE SOLID DOOR STAINLESS STEEL W/AC

UL Type 1, IP30	Nominal (In.)	RU
PTRS242424XA	24 x 24 x 24	12
PTRS362424XA	36 x 24 x 24	19
PTRS482424XA	48 x 24 x 24	26

#### PROTEK DOUBLE-HINGED STAINLESS STEEL W/AC

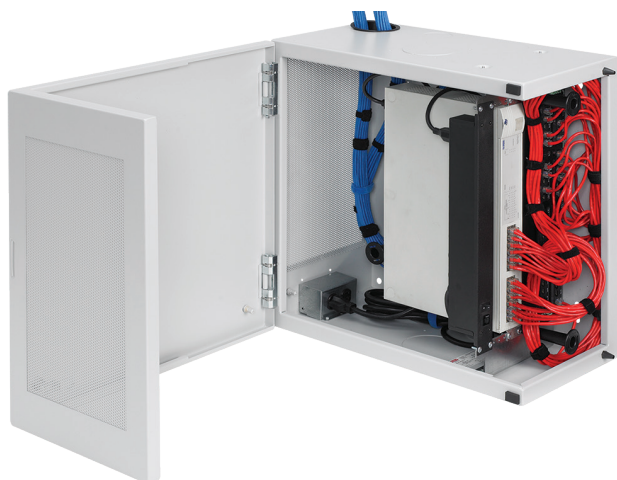
UL Type 1, IP30	Nominal (In.)	RU
PTHS242428XA	24 x 24 x 28	12
PTHS362428XA	36 x 24 x 28	19
PTHS482428XA	48 x 24 x 28	26



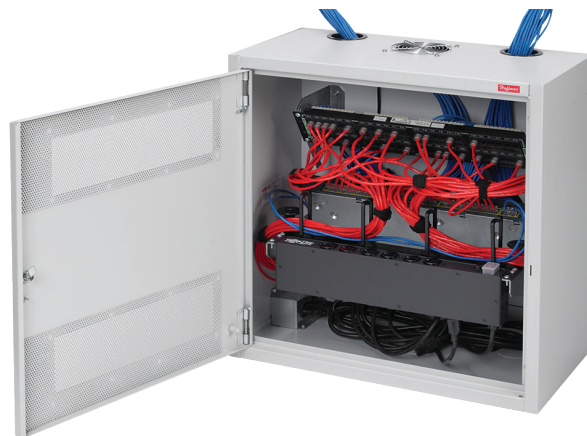
# Specialty Cabinets

## AND WALL-MOUNT RACKS

L-Box shown with PDU, patch panel and network switch



D-Box shown with PDU, angled patch panel, network switch and top-mounted fan



**Wall-mount cabinets and racking deliver** security and accessibility even in tight corners or extreme conditions. Let us help you find the right solution from our extensive product line or modify an existing offering to meet your unique requirements.

### L-BOX TYPE 1 WALL-MOUNT CABINET

The L-Box Cabinet meets a wide range of network needs, including intermediate distribution frame (IDF), zone cabling, cross connections and consolidation points.

- Unique vertical mounting
- Self-retained hinge pins allow easy door removal
- Wrap-around L-shaped door provides two-sided access to equipment
- Quarter-turn latches with key lock

### L-BOX WALL-MOUNT CABINET: STANDARD SIZES

Catalog Number	Nominal Size (Inches)
DBL242412G	24 x 24 x 12
DBL362412G	36 x 24 x 12
DBL482412G	48 x 24 x 12

### D-BOX TYPE 1 WALL-MOUNT CABINET

The D-Box Cabinet provides convenient mounting, storage and protection for network equipment, patch panels and connections.

- Fixed and rotating rack angles
- Accommodates high-density equipment mounting
- Reversible door fits flush to body with no exposed corners
- Multiple cable tie-down points

### D-BOX WALL-MOUNT CABINET: STANDARD SIZES

Catalog Number	Nominal Size (Inches)
DBS24248G	24 x 24 x 8
DBS36248G	36 x 24 x 8
DBS48248G	48 x 24 x 8
DBS242412G	24 x 24 x 12
DBS362412G	36 x 24 x 12
DBS482412G	48 x 24 x 12

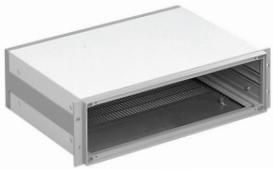
19" Hinged  
Wall-Mount  
Panel



#### 19-INCH HINGED WALL-MOUNT PANEL: STANDARD SIZES

Catalog Number	Height (Inches)	Load Rating (Lbs.)	Rack Units
E19HPM1U	1.75	25	1
E19HPM2U	3.50	50	2
E19HPM4U	8.00	100	4
E19HPM6U	10.50	150	6
E19HPM8U	14.00	200	8

Rack-Mount  
or Desktop  
Case



#### 19-INCH RACK-MOUNT OR DESKTOP CASE: STANDARD SIZES

Catalog Number	Nominal Size (Inches)	Rack Units
ERC3U4837	5 x 19 x 15	3
ERC4U4843	7 x 19 x 17	4

19" Rack wall  
mounting  
PivotRack



#### 19-INCH RACK WALL MOUNTING PIVOTRACK: STANDARD SIZES

Catalog Number	Height (A) in.	Width (B) in.	Depth (C) in.	Rack Units	D in.	G in.
E19SWMC12U24	30.0	7.0	24.1	12	22.75	26.0
E19SWMC20U24	44.0	7.0	24.1	20	36.75	40.0

19" Rack wall  
mounting  
VersaRack



#### 19-INCH RACK WALL MOUNTING VERSARACK: STANDARD SIZES

Catalog Number	Height (A) in.	Width (B) in.	Depth (C) in.	Rack Units	F in.	G in.	Vertical Cable Manager Accessory
E19SWM12U12	27.8	20.91	12.28	12	9.24	22.30	E19C12U
E19SWM12U24	27.8	20.91	24.29	12	21.24	22.30	E19C12U
E19SWM20U12	41.81	20.91	12.28	20	9.24	36.31	E19C20U
E19SWM20U24	41.81	20.91	24.29	20	21.24	36.31	E19C20U
E19SWM25U12	50.59	20.91	12.28	25	9.24	45.09	E19C25U
E19SWM25U24	50.59	20.91	24.29	25	21.24	45.09	E19C25U

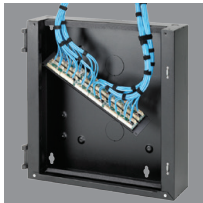
# AccessPlus

## DOUBLE-HINGED CABINET

### ACCESSPLUS TYPE 1 DOUBLE-HINGED WALL-MOUNT CABINET

- Tinted safety glass for greater clarity, strength and scratch resistance than plexiglass
- Latch-free sides permit flush-mount installations in tight spaces and corners
- Gland plate models accommodate pre-wired patch panel installation
- Cable tie-down slots ease cable management
- Easy one-person mounting
- Vertical cable manager included with 28" wide cabinets

Gland plate option is ideal for retrofits



- ✓ **INDUSTRY-LEADING LOAD CAPACITIES FROM 250 UP TO 500 LBS.**
- ✓ **BEST-IN-CLASS AESTHETICS WITH QUALITY FEATURES**
- ✓ **WIDE VARIETY OF SIZES IN STANDARD AND 30" EXTRA-DEEP MODELS**
- ✓ **28" WIDE MODELS WITH INTEGRATED VERTICAL CABLE MANAGERS**
- ✓ **TOOL-LESS HINGES SEPARATE SECTIONS FOR EASIER INSTALLATION**

### ACCESSPLUS TYPE 1 DOUBLE-HINGED WALL-MOUNT CABINET: STANDARD SIZES

Window Door					
Solid Door with Knockouts	Window Door	With Gland Plate	With Cable Manager and Gland Plate	Nominal Size (Inches)	Rack Units
	EWMW162418			16 x 24 x 18	8
	EWMW162425			16 x 24 x 25	8
EWMS242418	EWMW242418	EWMWG242418		24 x 24 x 18	12
EWMS362418	EWMW362418	EWMWG362418		36 x 24 x 18	19
EWMS482418	EWMW482418	EWMWG482418		48 x 24 x 18	26
	EWMW602418			60 x 24 x 18	32
	EWMW722418			72 x 24 x 18	39
EWMS242425	EWMW242425	EWMWG242425		24 x 24 x 25	12
EWMS362425	EWMW362425	EWMWG362425		36 x 24 x 25	19
EWMS482425	EWMW482425	EWMWG482425		48 x 24 x 25	26
	EWMW602425			60 x 24 x 25	32
	EWMW722425			72 x 24 x 25	39
EWMS242436	EWMW242436	EWMWG242436		24 x 24 x 26	12
EWMS362436	EWMW362436	EWMWG362436		36 x 24 x 26	19
EWMS482436	EWMW482436			48 x 24 x 26	26
EWMS242430				24 x 24 x 30	12
EWMS362430				36 x 24 x 30	19
		EWMWG242825		24 x 28 x 25	12
		EWMWG362825		36 x 28 x 25	19
		EWMWG482825		48 x 28 x 25	26
Extra Deep Models	EWMW242430			24 x 24 x 30	12
	EWMW362430			36 x 24 x 30	19
	EWMW482430			48 x 24 x 30	26
Includes 4» wide vertical cable manager with fingers	EWMW242825			24 x 28 x 25	12
	EWMW362825			36 x 28 x 25	19
	EWMW482825			48 x 28 x 25	26

### ACCESSPLUS ACCESSORIES

Vertical Cable Manager	Use with
EWMC24	EWMW242825
EWMC36	EWMW362825
EWMC48	EWMW482825
Vertical Cable Manager	Use with
EWMF1	18" Deep
EWMF2	25" and 30" Deep
Vertical Cable Manager	Use with
E333KEY	All locks with code 333, qty 2 keys





# Composite CABINETS

## PERFECT CABINETS FOR WIRELESS ACCESS POINTS



Lightweight, corrosion-resistant composite cabinets excel at protecting WiFi equipment indoors or out while allowing WiFi and WLAN signals to pass through the cabinet unimpeded. HOFFMAN Type 4X Composite Cabinets seal out water and dust and are available with solid or window covers that are secured with screws or quick-release latches. Choose from fiberglass or polyester cabinet platforms that are easy to modify in the field and ideal for applications in tunnels, floor vaults or marinas as well as on outside walls and rooftops.



Hinged-Cover  
Type 4X Cabinets



UltrX  
Type 4X Cabinets



PolyPro Type  
4X Cabinets

## FIBERGLASS HINGED-COVER TYPE 4X WIFI CABINET

- Resists chemicals and temperature changes
- Quick-release latches in corrosion-resistant polyester
- Includes ¾" plywood panel for mounting equipment
- Cabinets with solid doors are plenum rated
- Removable hinged-cover

## ULTRX FIBERGLASS TYPE 4X WIFI CABINET

- Can be rotated 180° for left and right hinging
- Standard molded-in drip shields
- Optional data pocket in high-impact thermoplastic
- Replaceable breakaway hinges

## POLYPRO WIFI, TYPE 4X CABINET

- High-performance solution for demanding WiFi applications including harsh chemicals, flames, outdoor extremes and corrosive environments
- Offers superior UV resistance; eliminates fiberbloom associated with fiberglass and less weight
- Provides excellent chemical resistance to a broad range of solvents, alkalis and acids
- Resists cracking and provides excellent impact resistance
- Removable snap-hinge cover for easy access

## FIBERGLASS HINGED-COVER TYPE 4X WIFI CABINETS: STANDARD SIZES

Solid Door	Window Door	Nominal (In.)
D664CHSCFGP	D664CHSCFGWP	6 x 6 x 4
D16148CHSCFGP	D16148CHSCFGWP	16 x 14 x 8
D181610CHSCFGP	D181610CHSCFGWP	18 x 16 x 10

## DATAKOM ULTRX FIBERGLASS TYPE 4X WIFI CABINETS: STANDARD SIZES

Solid Door	Window Door	Nominal (In.)
DU606030P	DU606030WP	25 x 24 x 13

## DATAKOM POLYPRO POLYESTER TYPE 4X WIFI CABINETS: STANDARD SIZES

Solid Door	Window Door	Nominal (In.)
D664WF	D664WFW	6 x 6 x 4
D16148WF	D16148WFW	16 x 14 x 8

# Aluminum

## OUTDOOR CABINETS

### OUTSIDE PLANT (OSP) APPLICATIONS

For outside plant (OSP) needs, turn to HOFFMAN. We offer a full range of OSP products and accessories. OSP products include FTTX, DSL, outdoor aluminum and pole-mount cabinets. See the HOFFMAN Networking Catalog for additional details.



Type 3, 3R, 4, 4X, 12 rated  
(rack-mount devices shown not included)



### COMLINE ALUMINUM WALL- AND POLE-MOUNT CABINETS

Lightweight, corrosion-resistant aluminum provides long-lasting protection in extreme environments indoors or out, including petrochemical plants, sewage facilities and marine settings.

- Accessory solar shield helps resist heat build-up
- Foam-in-place gasket seals out contaminants
- Single- and three-point latching for increased security
- Rack angles included (one set)
- Doorstop/wind latch holds door in place during service for easier installation and improved safety

### COMLINE ALUMINUM WALL-MOUNT CABINETS: STANDARD SIZES

Catalog Number	Nominal (In.)	Rack Units
ECL606050P	24 x 24 x 20	12
ECL906050P	36 x 24 x 20	18
ECL907060P	36 x 28 x 24	18
ECL1207060P	48 x 28 x 24	25

### STANDARD SIZES WITH BATTERY COMPARTMENT

Catalog Number	Nominal (In.)	Rack Units
ECL606050PB	38 x 24 x 20	12
ECL906050PB	50 x 24 x 20	18
ECL907060PB	50 x 28 x 24	18
ECL1207060PB	62 x 28 x 24	25

### COMLINE ALUMINUM POLE-MOUNT CABINET

Catalog Number	Nominal (In.)	Rack Units
ECL603537VP	24 x 24 x 15	5



Custom ComLine Pole-Mount Cabinet with heat exchanger and customer integration (rack-mount devices shown not included)

# Comparison Guide

## MATERIALS, APPLICATIONS AND MODIFICATIONS

### NON-METALLIC WALL-MOUNT ENCLOSURES

Material	UV performance	Chemical resistance	Impact strength	Rigidity	Temperature range	Weight (12" x 12" x 6")	Flammability	Water absorption resistance	Recyclable	Ease of adding cutouts
Fiberglass	Excellent	Excellent	Good	Very rigid	-31 to 266°F (-35 to 130°C)	11 lbs.	Self-extinguishing	Good	No	Dusty can be drilled
Polycarbonate	Good	Excellent	Excellent	Flexible / tough	-31 to 180°F (-35 to 82°C)	4.1 lbs.	Self-extinguishing	Fair	Yes	Low dust can be drilled/punched

### MATERIAL CHARACTERISTICS

Material	Cost	Weight	EMC	Heat Dissipation	Heat Absorption	Impact Resistance	Conductivity/ Grounding	Available Sizes	Modifications
Mild Steel	2	5		3	3	3	3		
304 Stainless Steel	4	5	Needs a conductive gasket	3	3	2	4	No constraints on sizes; easily modified to meet specifications	No constraints in fabrication process; some constraints on modifications in the field
Aluminum Sheet	3	3		5	1	1	5		
Polycarbonate	2	1	Requires special coating and gasket	1	5	4	1	Must select available sizes; tooling limits meeting specific size needs	Limited to holes with some color options
Fiberglass*	3	3		1	5	3	1		

\* Spray-up Ratings: 1 = Low 5 = High

### IDEAL ENCLOSURE QUICK GLANCE MATRIX: APPLICATIONS AND ENVIRONMENTAL CONDITIONS

Wall-mount enclosure family	On-Premises Networking (office, factory, school, retail outlets)	Distributed Networks and Enterprise Systems	Audio/Visual Broadcasting	Security & Monitoring	WIFI	Data Center	Factory Automation	Harsh Environment	Corrosive Environment	Outdoor
ProTek Single Door	•	•		•			•	•		
ProTek Double Hinged	•			•			•	•		
ProTek 3R		•		•			•	•		•
ProTek Stainless		•		•			•	•	•	•
AccessPlus	•	•	•	•		•				
L-Box	•	•	•	•						
D-Box	•	•	•	•		•				
WiFi Fiberglass	•	•	•	•	•	•	•	•	•	•
WiFi PolyPro	•	•	•	•	•	•	•	•	•	•
ComLine					•			•	•	•

### NEMA, UL, CSA ENCLOSURE RATINGS AND APPROXIMATE IEC CROSS REFERENCE

#### OUTDOOR LOCATION ENCLOSURE RATINGS:

Specific Non-Hazardous Applications

Provides a degree of protection against these environmental conditions:	Type of Enclosure			
	3	3R <sup>a</sup>	4	4X
Incidental contact w/enclosed equipment	•	•	•	•
Rain, snow and sleet <sup>b</sup>	•	•	•	•
Formation of ice on the enclosure <sup>c</sup>			•	•
Dust and windblown dust	•		•	•
Dripping non-corrosive liquids	•	•	•	•
Splashing and hose-directed water			•	•
Corrosive agents				•
IEC Enclosure Type cross reference*	IP64	IP22	IP66	IP66

a These enclosures may be ventilated

b External operating mechanisms are not required to be operable when enclosure is ice covered

c External operating mechanisms are operable when the enclosure is ice covered

\*Approximate; complies to IEC Enclosure Type ratings (IEC 60529)

#### INDOOR LOCATION ENCLOSURE RATINGS:

Specific Non-Hazardous Applications

Provides a degree of protection against these environmental conditions:	Type of Enclosure			
	1 <sup>a</sup>	4	4X	12
Incidental contact w/enclosed equipment	•	•	•	•
Falling dirt	•	•	•	•
Falling liquids and light splashing		•	•	•
Dust, lint fibers and flyings <sup>b</sup>		•	•	•
Hose-down and splashing water		•	•	
Oil and coolant seepage			•	•
Corrosive agents		•		
IEC Enclosure Type cross reference*	IP20	IP66	IP66	IP55

a These enclosures may be ventilated. However, Type 1 may not provide protection against small particles of falling dirt when ventilation is provided in the enclosure top. Consult HOFFMAN for more information.

b These fibers and flyings are non-hazardous materials and are not considered Class II type ignitable fibers or combustible flyings. For Class III type ignitable fibers or combustible flyings see the National Electrical Code Section 505






\*Approximate; complies to IEC Enclosure Type ratings (IEC 60529)

Enclosure ratings tables are reproduced by permission of the National Electrical Manufacturers Association. For more detailed and complete information, NEMA Standards Publication 250-2003, "Enclosures for Electrical Equipment (1000 Volts Maximum)" should be consulted, available from IHS at 800 854-7179 or [www.global.ihs.com](http://www.global.ihs.com)








# A HOFFMAN Solution

## FOR NEARLY EVERY APPLICATION

Material	MILD STEEL				
Wall-Mount Family	ProTek Single-Door	ProTek Double-Hinged	ProTek 3R	ProTek Stainless	AccessPlus
					
Environment	Dusty / Wet	Dusty / Wet	Dusty / Wet	Dusty / Wet and Corrosion	Indoor
Size Range (inches)	24 x 24 x 12 to 48 x 24 x 24	16 x 24 x 15 to 48 x 24 x 25	24 x 24 x 12 to 48 x 24 x 24	24 x 24 x 12 to 48 x 24 x 28	24 x 24 x 18 to 72 x 24 x 25
Rack Units (RU)	12–26	7–26	12–26	7–26	12–39
Loading (Static)	200–400 lbs.	175–400 lbs.	175–350 lbs.	175–350 lbs.	250–500 lbs.
Standard Features	<p>ProTek wall-mounts are ideal for protecting network equipment beyond typical Type 1 cabinets.</p> <ul style="list-style-type: none"> <li>• Available with fan and filter and AC packages</li> <li>• Extra-deep sizes</li> <li>• Fully vented with foam-in-place gasket</li> <li>• Safety glass</li> <li>• Rack angle standard</li> <li>• Grounding and bonding provisions</li> </ul>	<p>ProTek double-hinged offers the flexibility and accessibility of a double-hinged wall-mount and the environmental protection of the ProTek Type 4, 12 ratings.</p> <ul style="list-style-type: none"> <li>• Double-hinged for easy access</li> <li>• Available with fan and filter and AC packages</li> <li>• Extra-deep sizes</li> <li>• Fully-vented with foam-in-place gasket</li> <li>• Safety glass</li> <li>• Rack angle standard</li> <li>• Front and rear access</li> <li>• Grounding and bonding provisions</li> </ul>	<p>ProTek 3R wall-mounts for networking and industrial applications that require UL Type 3R protection.</p> <ul style="list-style-type: none"> <li>• Single-door and double-hinged options</li> <li>• Integral top solar/drip shield</li> <li>• Integrated thermostatically-controlled fans</li> <li>• Window door version for indoor applications</li> <li>• Rack angles of 14-gauge steel</li> <li>• Foam-in-place gasket</li> </ul>	<p>ProTek wall-mounts featuring robust stainless steel construction for superior resistance to corrosive environments.</p> <ul style="list-style-type: none"> <li>• Single-door and double-hinged options</li> <li>• Integral top solar/drip shield</li> <li>• Integrated thermostatically-controlled fans</li> <li>• Window door version for indoor applications</li> <li>• Foam-in-place gasket</li> </ul>	<p>AccessPlus double-hinged wall-mount provides both security and accessibility. Designed to hold multiple pieces of voice data equipment. Perfect where space is at a premium.</p> <ul style="list-style-type: none"> <li>• Safety glass window units</li> <li>• Latch-free sides permit flush-mounting to adjacent equipment, cabinets and walls</li> <li>• Single-person mounting</li> <li>• Pole mounting kit available</li> <li>• Reversible hinges (left/right)</li> <li>• Grounding and bonding provisions</li> </ul>
<b>Body Features:</b>					
Front Door	Window or solid	Window or solid	Window or solid	Window or solid	Window or solid
Back	Rear-mounting studs, panel-ready and wall-mounting provisions	Rear-mounting studs, panel-ready and wall-mounting provisions	Rear-mounting studs, panel-ready and wall-mounting provisions	Rear-mounting studs, panel-ready and wall-mounting provisions	Keyhole mounting slots, accessory raised pads, cable tie-down points, large cable knock-out
Top/Bottom	Solid sheet steel construction	Solid sheet steel construction	Solid sheet steel construction	Solid sheet steel construction	Gland plate/Cable knock-outs, fan-ready
Sides	Solid sheet steel construction	Solid sheet steel construction	Solid sheet steel construction	Solid sheet steel construction	Steel construction
Rack Angles	1 set tapped 10-32 fully adjustable, plated	1 set tapped 10-32 fully adjustable, plated	1 set tapped 10-32 fully adjustable, plated	1 set tapped 10-32 fully adjustable, plated	1 set tapped 10-32 fully adjustable, plated
Applications	<p>Ideal for remote areas with harsh environments for network equipment. Extra-deep to accommodate rack equipment.</p> <ul style="list-style-type: none"> <li>• Indoors and outdoors</li> <li>• Protects from dust, dirt and splashing water</li> </ul>	<p>Ideal for remote areas with harsh environments for network equipment. Extra-deep to accommodate rack equipment.</p> <ul style="list-style-type: none"> <li>• Protects from dust, dirt and splashing water</li> </ul>	<p>Excellent off-the-shelf choice for mounting 19" rack, panel-mounted devices or other electronic equipment</p> <ul style="list-style-type: none"> <li>• Indoors and outdoors</li> <li>• Protects against water, dirt and other contaminants</li> </ul>	<p>Excellent off-the-shelf choice for mounting 19-in. rack, panel-mounted devices or other electronic equipment</p> <ul style="list-style-type: none"> <li>• Indoors and outdoors</li> <li>• Protects against water, dirt and other contaminants</li> <li>• Corrosion resistance</li> </ul>	<p>Most frequently utilized model for mounting network equipment. Gland plate offering great for retrofit applications.</p> <ul style="list-style-type: none"> <li>• Indoors with built-in ventilation areas</li> </ul>
Ratings	UL 508A, 508, CSA, NEMA, IEC Type 4, 12, IP55, IP66 Plenum rated	UL 508A, 508, CSA, NEMA, IEC Type 4, 12, IP55, IP66 Plenum rated	UL 508A, 508, CSA, NEMA, IEC Type 3R Solid door, Type 1 (window door) Plenum rated	UL 508A, 508, CSA, NEMA, IEC Type 4X, IP66 Plenum rated	UL 1863, 508A, CSA, NEMA, IEC Type 1, IP20 Plenum rated

# A HOFFMAN Solution

## FOR NEARLY EVERY APPLICATION

		Composite		Aluminum
L-Box	D-Box	WiFi Fiberglass Enclosures	WiFi PolyPro Enclosures	ComLine
				
Indoor	Indoor	Indoor / Outdoor	Indoor / Outdoor	Outdoor
24 x 24 x 12 to 48 x 24 x 12	24 x 24 x 8 to 48 x 24 x 12	6 x 6 x 4 to 25 x 24 x 13	6 x 6 x 4 to 25 x 24 x 13	12 x 12 x 6 to 60 x 35 x 12
6–12	4–6	Not applicable for smaller model. Optional RU for large model.	Not applicable for smaller model. Optional RU for large model.	Not supplied as standard. Optional 12–26 RUs.
75 lbs.	75 lbs.	10–25 lbs.	10–25 lbs.	50–200 lbs.
L-Box provides convenient mounting and storage for patch panels in a space-saving design. <ul style="list-style-type: none"> <li>Removable door</li> <li>Cable tie-down points</li> <li>Mounting screws provided</li> <li>Top and bottom knock-outs</li> <li>Cable spool mounting</li> <li>Grounding and bonding provisions</li> <li>Horizontal cable distribution</li> <li>Copper to fiber</li> <li>Vertical rack angles</li> </ul>	D-Box provides convenient mounting and patch panel storage. <ul style="list-style-type: none"> <li>Removable and reversible door</li> <li>Quarter-turn latches with keyed lock</li> <li>Cable tie-down points</li> <li>Mounting screws provided</li> <li>Grounding and bonding provisions</li> <li>Top and bottom knock-outs</li> <li>Cable spool mounting</li> <li>Complete accessories—fans, shelves, etc.</li> <li>Horizontal cable distribution</li> <li>Copper to fiber</li> <li>Consolidation points</li> <li>Fixed and rotating rack angles</li> </ul>	A secure cabinet for WiFi and other network equipment. Fiberglass does not impede WiFi/ WLAN signals. <ul style="list-style-type: none"> <li>Corrosion resistant</li> <li>Fiberglass is easily punched or drilled</li> <li>Foam-in-place gasketing</li> <li>Removable door with stainless steel hinge pins</li> <li>Window models are scratch resistant GE Lexan Margard</li> <li>Small model—screw cover</li> <li>Large model—key lock knob</li> <li>Plywood back panel provided</li> </ul>	Durable polyester construction and wood panel endures demanding environments and allows WiFi and WLAN signals to pass through enclosure unimpeded. <ul style="list-style-type: none"> <li>Non-glass-filled polyester for excellent UV resistance</li> <li>Polyester is easily drilled and punched</li> <li>Corrosion and chemical resistant</li> <li>Withstand weather extremes</li> <li>Lightweight with good impact resistance</li> <li>Overlapping tongue-and-groove raised cover and gasket</li> <li>Removable snap-hinge cover</li> </ul>	ComLine lightweight, corrosion-resistant aluminum cabinet provides long-lasting protection for electrical and network components for both indoor and outdoor environments. <ul style="list-style-type: none"> <li>Corrosion resistant</li> <li>Solar shield provides cooler interior for outdoor applications</li> <li>Foam-in-place gasketing</li> <li>Latching—one- and three-point options</li> <li>Door stop</li> <li>Door options—removable and heavy-duty continuous</li> <li>Grounding and bonding provisions</li> </ul>
Vented wrap-around door	Solid with vents	Solid or window	Solid or window	Solid
Keyhole mounting slots, accessory raised pads, cable tie-down points, large cable knock-out	Keyhole mounting slots, accessory raised pads, cable tie-down points, large cable knock-out	Wood panel standard	Wood panel standard	Rear-mounting studs, panel-ready and wall-mounting provisions
Cable knock-outs, fan-ready	Cable knock-outs, fan-ready	Solid fiberglass and polycarbonate construction	Solid polyester construction	Solid aluminum construction
Steel construction	Solid sheet steel construction	Solid fiberglass and polycarbonate construction	Solid polyester construction	Solid aluminum construction
1 set tapped 10-32, fixed plated	<ul style="list-style-type: none"> <li>1 set tapped 10-32, fixed plated</li> <li>1 set tapped 10-32, fully adjustable</li> </ul>	Optional on largest size	Optional on largest size	<ul style="list-style-type: none"> <li>Optional based on size</li> <li>1 set tapped 10-32, fully adjustable</li> </ul>
Vertical equipment mounting provides horizontal cable distribution. Offers a lower profile installation. <ul style="list-style-type: none"> <li>Indoors with built-in ventilation areas</li> </ul>	Fixed and rotating rack angles for easy equipment mounting. Offers a lower profile installation. <ul style="list-style-type: none"> <li>Indoors with built-in ventilation areas</li> </ul>	Great for tunnels, marinas, outside walls and rooftops. Ideal for wireless applications; signals pass unimpeded through fiberglass polycarbonate. <ul style="list-style-type: none"> <li>Indoors and outdoors plus hazardous areas</li> <li>Protects from dust, dirt and splashing water</li> </ul>	Perform well in applications subject to harsh chemicals, weather extremes, corrosive environments and flames. <ul style="list-style-type: none"> <li>Indoors and outdoors plus hazardous locations</li> <li>Protects from dust, dirt and splashing water</li> </ul>	Great for rooftop, pole-mount and tower mounting. Lightweight with corrosion resistance. <ul style="list-style-type: none"> <li>Indoors and outdoors plus hazardous areas</li> <li>Protects from dust, dirt and splashing water</li> </ul>
UL 1863, 508A, 60905, CSA, NEMA, IEC, EIA 310-D Type 1, IP40 Plenum rated	UL 1863, 508A, 60905, CSA, NEMA, IEC, EIA 310-D Type 1, IP40 Plenum rated	UL 508A, 508, CSA, NEMA, IEC Type 4, 4X, 12, 13 IP66 Plenum rated (solid door only)	UL 508A, 508, CSA, NEMA, IEC Type 4, 4X, 12, 13 IP66	UL 508A, 508, CSA, NEMA, IEC Type 3, 3R, 4, 4X, 12, IP66

## North America

Minneapolis, MN

Tel: +1.763.421.2240

Mexico, D.F.

Tel: +52.55.5280.1449

Toronto, Canada

Tel: +1.416.289.2770

## South America

Sao Paulo, Brazil

Tel: +55.11.5184.2100

Boitura, Brazil

Tel: +55.15.3363.9148

## Europe

Betschdorf, France

Tel: +33.3.88.90.64.90

Straubenhardt, Germany

Tel: +49.7082.794.0

Dzierzoniow, Poland

Tel: +48.74.64.63.900

Lainate, Italy

Tel: +39.02.932.7141

## Middle East & India

Dubai, United Arab Emirates

Tel: +971.4.378.1700

Bangalore, India

Tel: +91.80.6715.2001

## Asia

Shanghai, P.R. China

Tel: +86.21.2412.6943

Singapore

Tel: +65.6768.5800

Shin-Yokohama, Japan

Tel: +81.45.476.0271

Seoul, Korea

Tel: +82.2.2129.7755

Qingdao

Tel: +86.532.8771.6101

Our powerful portfolio of brands:

**CADDY**

**ERICO**

**HOFFMAN**

**RAYCHEM**

**SCHROFF**

**TRACER**



[nVent.com/HOFFMAN](https://nVent.com/HOFFMAN)