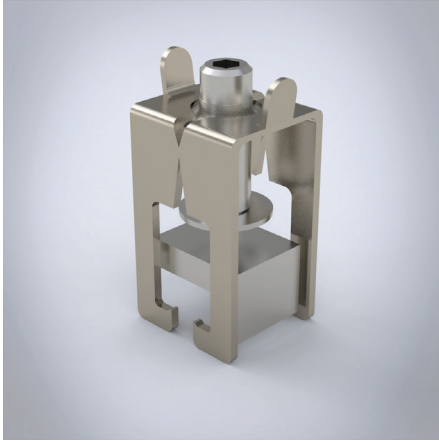


Brace terminals, flat

Brace terminals, flat



Description: Terminal for flat conductors with captive clamping screws, conductor can be overlapped, indication of nominal cross-section and tightening torque noted on the terminal. Contact between conductor and busbar via contact block.

Rated voltage: 690 V

For busbars: 20, 25, 30 × 5, 10

Approvals: UL, GL, DNV-GL

Connection min-max	End feed	Center feed	Pack quantity	Item no.
lam.Cu from 3 × 20 × 1 to 10 × 24 × 1	630 A	750 A	6 pcs.	01319
lam.Cu from 3 × 20 × 1 to 10 × 32 × 1	630 A	800 A	3 pcs.	01759