



This Vortex cooler, BP, with a IP 66 protection degree, is easy to install, has no moving parts, and is maintenance free. In addition to cooling, it also reduces the relative humidity within the enclosure it is mounted on. This Vortex cooler is an ideal solution to prevent overheating within the enclosure.

Description: Compact, reliable and low cost way to cool and purge enclosures. It produces cold air from compressed air, with no moving parts. The easy mounting through a standard electrical knockout makes this solution especially suitable to be installed even when the enclosures are already in the field. For a continuous Vortex operating, relative humidity inside the enclosure is maintained below 45%, no moisture condenses inside the enclosure (the enclosure must be sealed). Most TYPE 4 and 4X units include a silencer to minimize the noise. The coolers must be installed vertically to maintain the protection degree.

Material: Internal Vortex tube manufactured in stainless steel. External cover, BP TYPE 12 in plastic and aluminium, BP TYPE 4 in aluminium, and 4X in stainless steel.

Protection: Depending on type, up to IP66 | TYPE 4X.

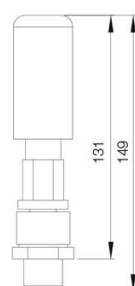
Pack quantity: Vortex cooler with mounting accessories.

IP 66 | TYPE 4X

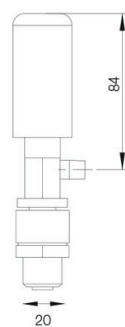


BP 4008

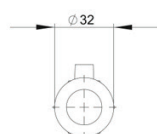
Front view



Side view

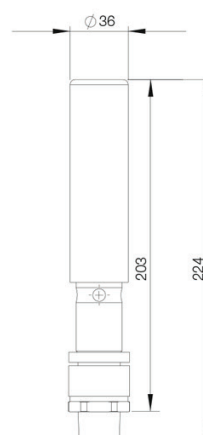


Top view

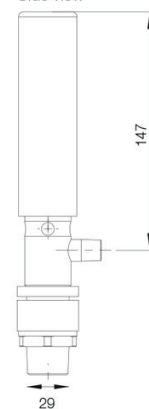


BP4015 / BP4030 / BP4040

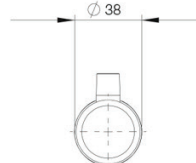
Front view



Side view



Top view



IP 54 | TYPE 12, Aluminium

H	Cooling Capacity (W)	Air flow (l/min)	Noise (dB)	Silencer included	Low pressure relief valve	Installation cut-out diam. (mm)	Air inlet	Weight (kg)	Item no.
131	162	227	78	No	No	22	1/8"	0.20	BP4008
203	293	425	87	No	No	29	1/4"	0.35	BP4015
203	586	850	88	No	No	29	1/4"	0.35	BP4030
203	820	1133	93	No	No	29	1/4"	0.35	BP4040

IP 66 | TYPE 4, Aluminium

H	Cooling Capacity (W)	Air flow (l/min)	Noise (dB)	Silencer included	Low pressure relief valve	Installation cut-out diam. (mm)	Air inlet	Weight (kg)	Item no.
126	162	227	78	No	Yes	33	1/8"	0.35	BP4608
185	293	425	73	Yes	Yes	48	1/4"	0.45	BP4615
185	586	850	74	Yes	Yes	48	1/4"	0.50	BP4630
185	820	1133	78	Yes	Yes	48	1/4"	1.00	BP4640

IP 66 | TYPE 4X, Stainless steel

H	Cooling Capacity (W)	Air flow (l/min)	Noise (dB)	Silencer included	Low pressure relief valve	Installation cut-out diam. (mm)	Air inlet	Weight (kg)	Item no.
126	162	227	78	No	Yes	33	1/8"	0.35	BP4608SS
185	293	425	73	Yes	Yes	48	1/4"	0.45	BP4615SS
185	586	850	74	Yes	Yes	48	1/4"	2.25	BP4630SS
185	820	1133	78	Yes	Yes	48	1/4"	1.00	BP4640SS

Cooling capacity is calculated with pressured air being 20 °C and having 7-bar pressure.

BP

Vortex cooler