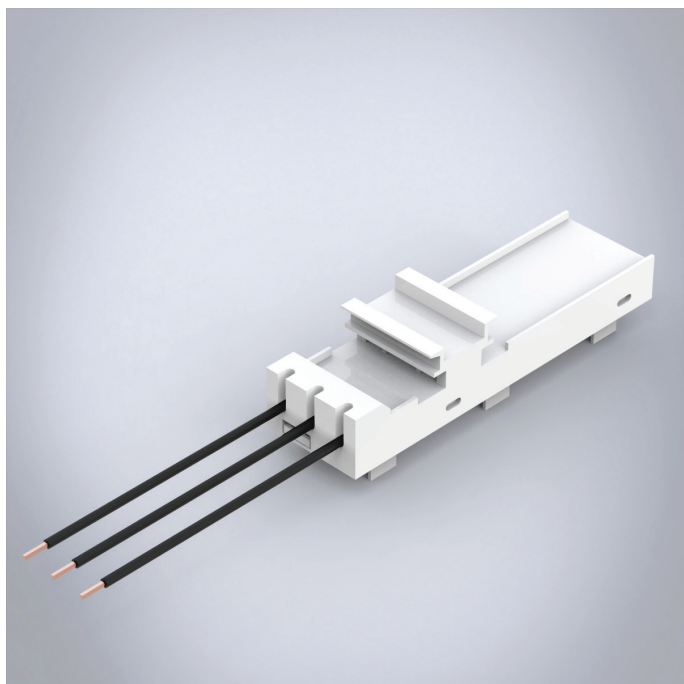


# 32666

CrossBoard Adapter Basic



Rated current	16 A
Cable diameter (mm)	2.5 mm <sup>2</sup>

**Description:** 3 pole adapter. One fixed mounting rail. For compact mounting of complete motor circuits.

**Rated voltage:** 690 V

**Dimensions:** 45 x 160 x 45 mm

**Pack quantity:** 1 pc.

**Approvals:** IEC, UL

Adapter for mounting motor protection devices.  
Adjustable mounting rail.