

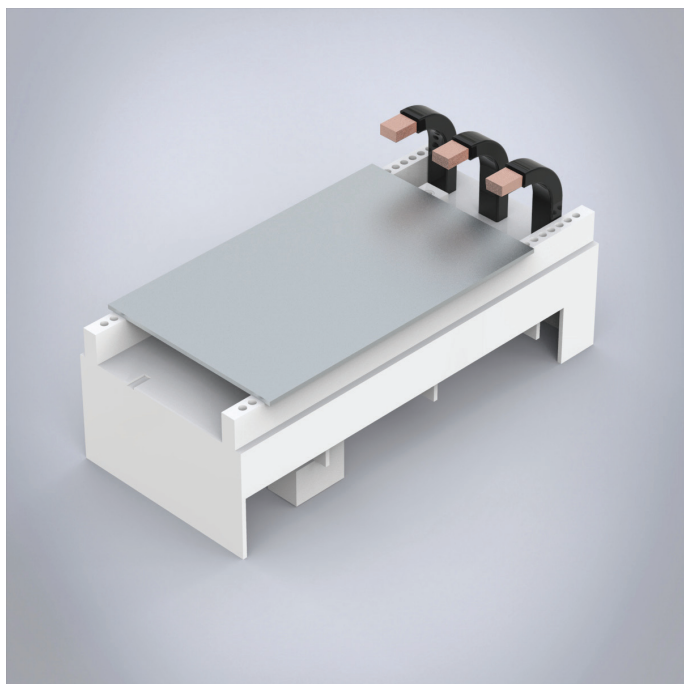
32575

Busbar adapter 160A

nVent

HOFFMAN

CONNECT AND PROTECT



Busbar adapters adapted to the component manufacturers' design.

Type	For ABB T-max T1, XT1,T2,XT2,GE FD160, Schneider el.NS80, NSX80, top connection to the system
W	90
Rated current	160 A

Description: 3-pole busbar adapter 160 A, adapted to the component manufacturer's design.

Rated voltage: 690 V

For busbars: 12, 15, 20, 25, 30 × 5, 10

Power dissipation at 80% load: 7.7 W

Pack quantity: 1 pc.

Approvals: