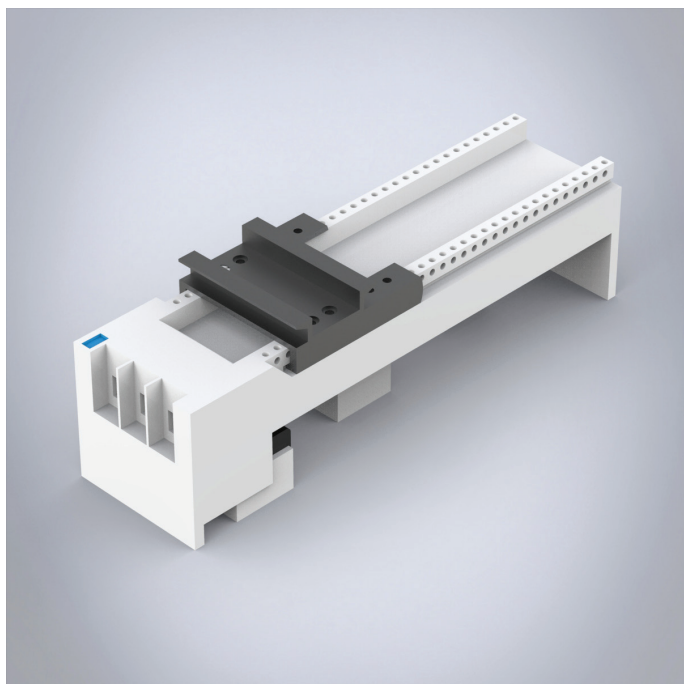


32466

Busbar adapter 80A, without cables



Busbar adapter with one mounting rail with screw terminals 16 mm².

W	54
---	----

Description: Busbar adapter 80 A. With one adjustable mounting rail. With terminals 16 mm², operated from the back.

Rated voltage: 690 V

Rated current: 80 A

For busbars: 12, 15, 20, 25, 30 × 5, 10

Power dissipation at 80% load: 6 W

Poles: 3-pole

Pack quantity: 1 pc.

Approvals: CSA, UL, GL