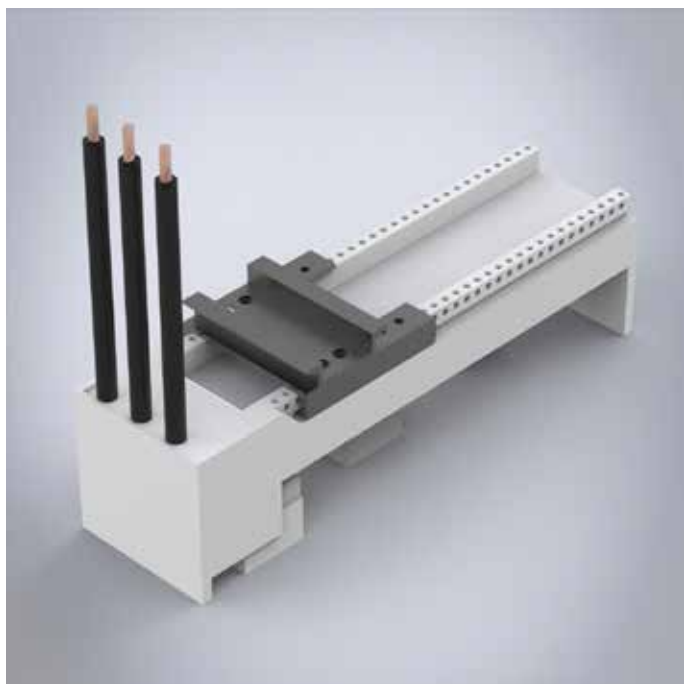


32443

Busbar adapter 32A, with cables



Busbar adapter with one mounting rail, pre-fitted with cables 6 mm².

Mounting Rails	1 pcs.
W	63

Description: Busbar adapter 32 A. With adjustable mounting rails. With leads 6 mm².

Rated voltage: 690 V.

Rated current: 32 A.

For busbars: 12, 15, 20, 25, 30 × 5, 10.

Power dissipation at 80% load: 1.5 W.

Poles: 3-pole.

Pack quantity: 1 pc.

Approvals: CSA, UL, GL.