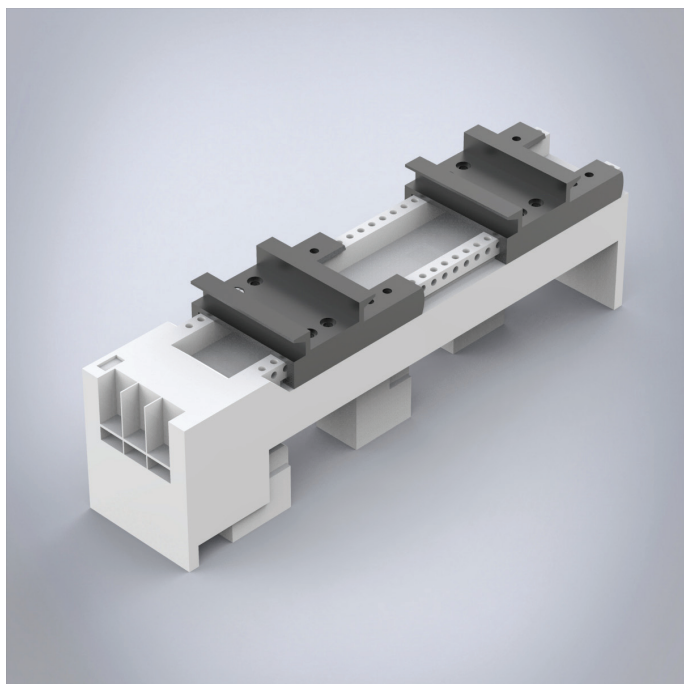


32436

Busbar adapter 25A, without cables



Description: Busbar adapter 25 A. With two adjustable mounting rails. With screw terminals 6 mm² from the rear.

Rated voltage: 690 V

Rated current: 25 A

For busbars: 12, 15, 20, 25, 30 × 5, 10

Power dissipation at 80% load: 1.2 W

Poles: 3-pole

Dimensions: 45 × 200 × 63 mm

Pack quantity: 1 pc.

Approvals: CSA, UL, GL

Busbar adapter with one mounting rail with screw terminals 6 mm².