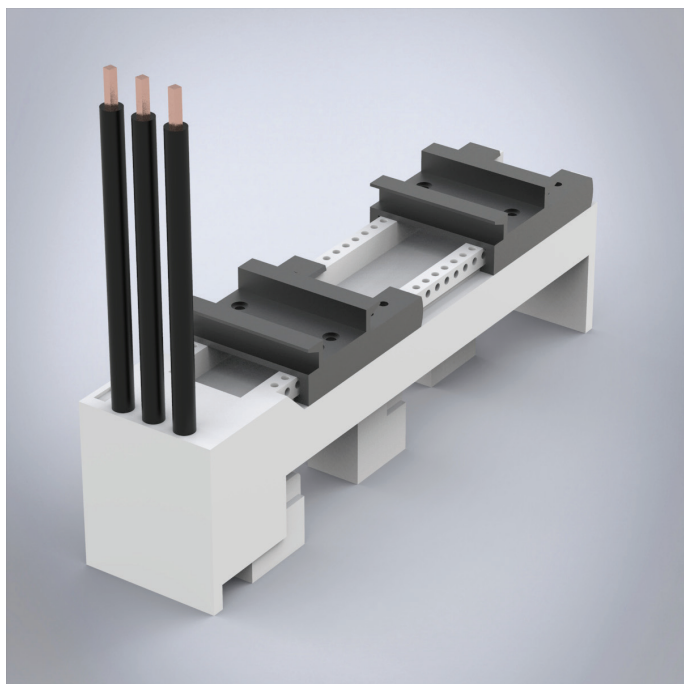


32434

Busbar adapter, 32A with cables



Busbar adapters adapted to the component manufacturers' design.

| | |
|------|---|
| Type | For direct starter Schneider Electric GV2-M/P |
|------|---|

Description: Busbar adapter, 32 A. With cables 6 mm². Adapted to the breaker manufacturer's design.

Rated voltage: 690 V

Rated current: 32 A

For busbars: 12, 15, 20, 25, 30 × 5, 10

Power dissipation at 80% load: 1,6 W

Width: 45 mm

Pack quantity: 1 pc.

Approvals: GL