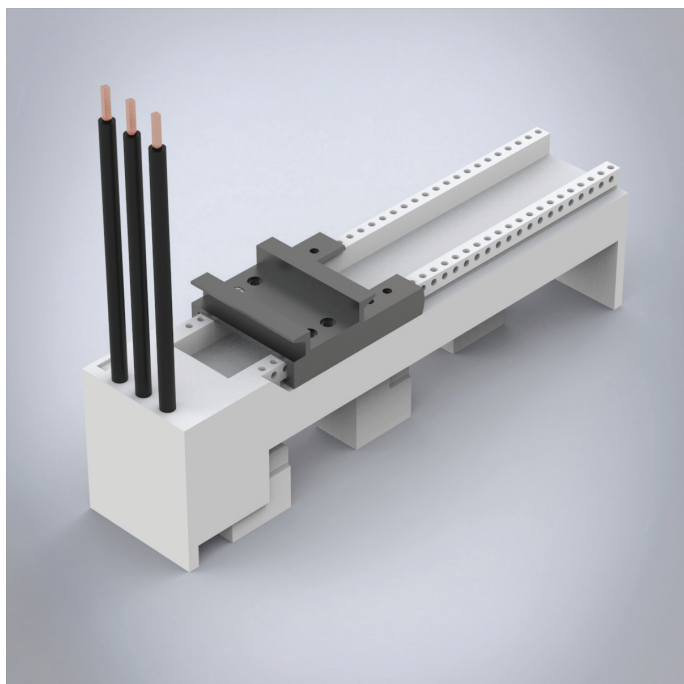


# 32430

Busbar adapter 25A, with cables



**Description:** Busbar adapter 25 A. With one adjustable mounting rail. With leads (4 mm<sup>2</sup>).

**Rated voltage:** 690 V

**Rated current:** 25 A

**For busbars:** 12, 15, 20, 25, 30 × 5, 10

**Power dissipation at 80% load:** 1.2 W

**Poles:** 3-pole

**Dimensions:** 45 × 200 × 63 mm

**Pack quantity:** 1 pc.

**Approvals:** CSA, UL, GL

Busbar adapter with one mounting rail, pre-fitted with cables 4 mm<sup>2</sup>.