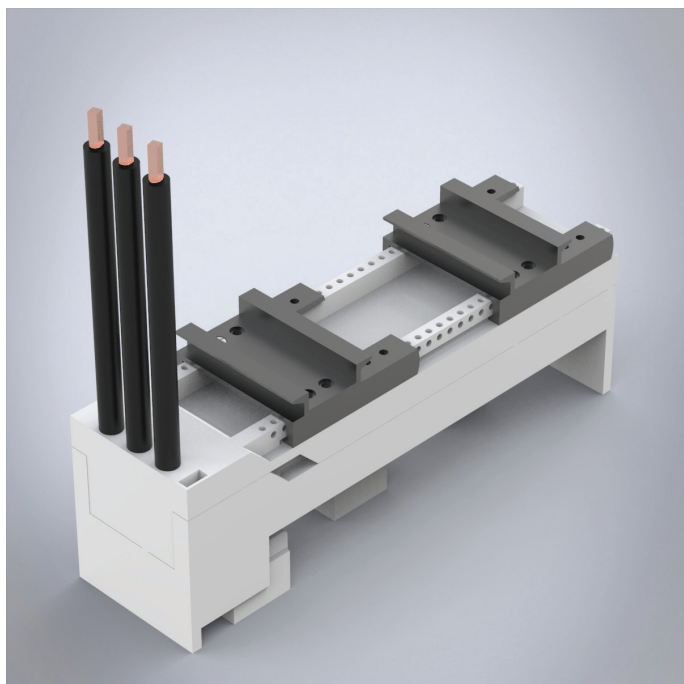


# 32404

Busbar adapter 32A, with cables



**Description:** Busbar adapter 32 A. With two adjustable mounting rails. With removable upper section and leads (6 mm<sup>2</sup>).

**Rated voltage:** 690 V

**Rated current:** 32 A

**For busbars:** 12, 15, 20, 25, 30 × 5, 10

**Power dissipation at 80% load:** 2.2 W

**Poles:** 3-pole

**Dimensions:** 54 × 200 × 75 mm

**Pack quantity:** 1 pc.

**Approvals:** CSA, UL, GL

Busbar adapter 32 A. With two adjustable mounting rails. The upper section is removable and has pre-fitted cables.