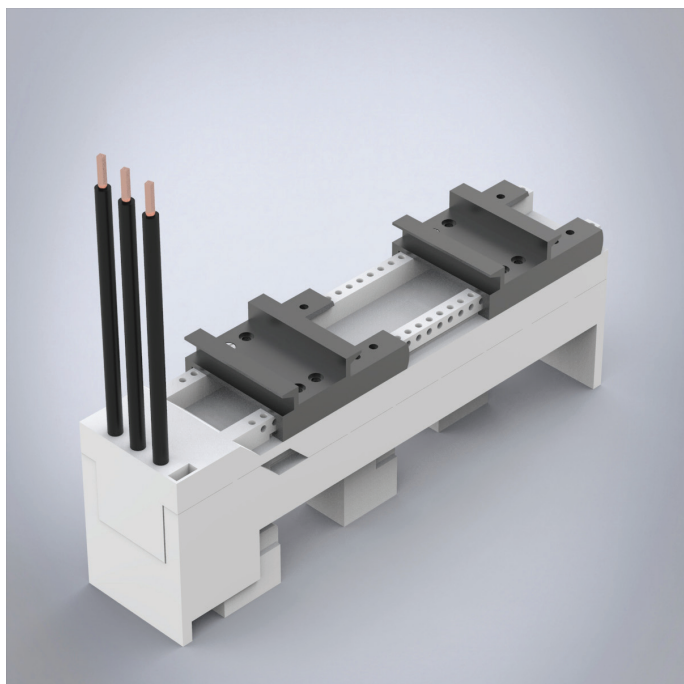


32400

Busbar adapter 25A with cables



Description: Busbar adapter 25 A. With two adjustable mounting rails. With removable upper section and leads (4 mm²).

Rated voltage: 690 V

Rated current: 25 A

For busbars: 12, 15, 20, 25, 30 × 5, 10

Power dissipation at 80% load: 1.7 W

Poles: 3-pole

Dimensions: 45 × 200 × 75 mm

Pack quantity: 1 pc.

Approvals: CSA, UL, GL

Busbar adapter 25 A. With two adjustable mounting rails. The upper section is removable and has prefitted cables.