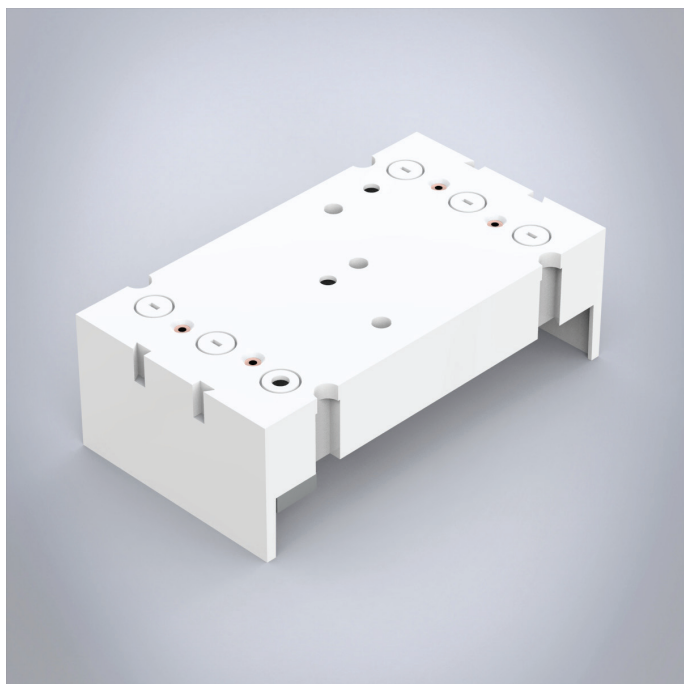


32156

Busbar adapter 250A



Busbar adapters adapted to the component manufacturer's design.

Type	For Schneider Electric NSX100-NSX250, GV7
------	---

Description: 3-pole busbar adapter 250 A, adapted to the component manufacturer's design.

Rated voltage: 690 V

Rated current: 250 A

For busbars: 12, 15, 20, 25, 30 × 5, 10

Power dissipation at 80% load: 26.1 W (32023), 10 W (32156)

Width: 105 mm

Height: 190 mm

Pack quantity: 1 pc.

Approvals: CSA,UL,GL