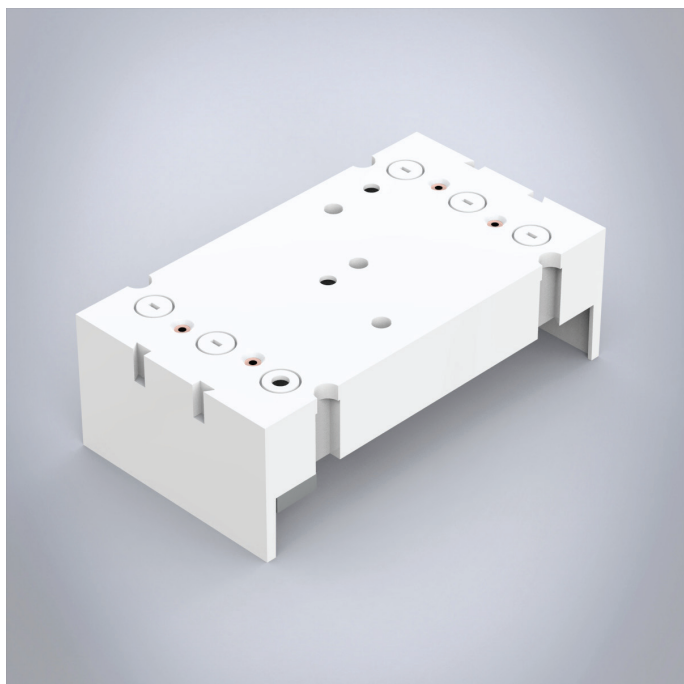


# 32023

Busbar adapter 250A



Busbar adapters adapted to the component manufacturer's design.

---

Type	For ABB T - max XT4
------	---------------------

---

**Description:** 3-pole busbar adapter 250 A, adapted to the component manufacturer's design.

**Rated voltage:** 690 V

**Rated current:** 250 A

**For busbars:** 12, 15, 20, 25, 30 × 5, 10

**Power dissipation at 80% load:** 26.1 W (32023), 10 W (32156)

**Width:** 105 mm

**Height:** 190 mm

**Pack quantity:** 1 pc.

**Approvals:** CSA,UL,GL