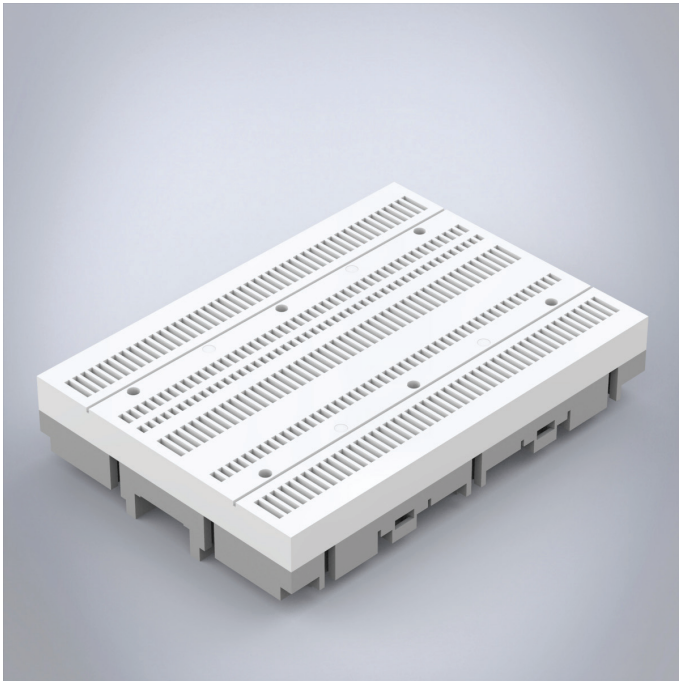


11225

CrossBoard mounting platform



Connection and mounting platform for all CrossBoard components.

W	225
H	160

Description: 3-pole modular power distribution system, with touch safe protection. Mounting platform for all CrossBoard components.

Rated voltage: 690 V.

Rated current: 125 A.

Power dissipation at 80% load: 3.4 W (11225), 6 W (11405).

Pack quantity: 1 pc.

Approvals: IEC, UL.