

## B-SERIES VERTICAL SLEEVE



The B-Series Vertical Sleeve is designed to be welded perpendicularly to common grades of structural plates and shapes. Typical applications include welding to base plates, anchor plates and for tying together structural steel members.

### FEATURES

- Designed to connect vertical reinforcing bars and angular reinforcing bars greater than 45 degrees
- Machined from weldable grades of steel
- Works with saw cut, flame cut and sheared bars
- Can be visually inspected after installation
- Available with extended sleeve lengths

### SPECIFICATIONS

Finish:	Plain
Sleeve:	Standard Length
Material:	Steel
100% U.S. Domestic Content:	Yes

Catalog Number	Rebar Size, Metric	Rebar Size, US	Rebar Size, Canada	Diameter 1(Ø1)	Diameter 2(Ø2)	Length 1(L1)	Length 2(L2)	Unit Weight
RBB592JA	16 mm	#5	15M	35 mm	22 mm	127 mm	64 mm	0.540 kg
RBB692JA	20 mm	#6	20M	38 mm	25 mm	127 mm	64 mm	0.640 kg
RBB792JA	22 mm	#7		41 mm	29 mm	127 mm	64 mm	0.680 kg
RBB8101JA	25 mm	#8	25M	48 mm	32 mm	127 mm	64 mm	1 kg
RBB992JA	28 mm	#9	30M	54 mm	38 mm	127 mm	64 mm	1.130 kg
RBB1092JA	32 mm	#10		57 mm	41 mm	127 mm	64 mm	1.220 kg
RBB11101JA	36 mm	#11	35M	64 mm	44 mm	152 mm	76 mm	1.910 kg
RBB1292JA	38 mm	#12		70 mm	48 mm	152 mm	64 mm	2.270 kg
RBB14101JA	43 mm	#14	45M	76 mm	54 mm	152 mm	64 mm	2.720 kg
RBB1892JA	57 mm	#18	55M	95 mm	67 mm	178 mm	64 mm	5.030 kg

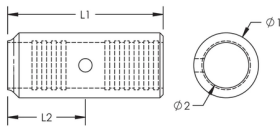
Designed to Meet: AASHTO;ABNT NBR 8548:1984;ACI 318 Type 1 (125% Specified Yield);ACI 318 Type 2 (Specified Tensile);ACI 349;ACI 359;AS3600;CAN/CSA - N287.2/.3/.4;IBC Type 1 (125% Specified Yield);IBC Type 2 (Specified Tensile);US Army Corps of Engineers;CAN/CSA - A23.3

## ADDITIONAL PRODUCT DETAILS

Prior to installation, please read and understand all of the detailed instructions and safety notices provided in the nVent LENTON Cadweld Rebar Splicing System Instruction Manual.

Sizes not shown may be available by special order. Contact your nVent LENTON representative for more information.

## DIAGRAMS



## WARNING

nVent products shall be installed and used only as indicated in nVent's product instruction sheets and training materials. Instruction sheets are available at [www.nvent.com](http://www.nvent.com) and from your nVent customer service representative. Improper installation, misuse, misapplication or other failure to completely follow nVent's instructions and warnings may cause product malfunction, property damage, serious bodily injury and death and/or void your warranty.

### North America

+1.800.753.9221  
Option 1 – Customer Care  
Option 2 – Technical Support

### Europe

Netherlands:  
+31 800-0200135  
France:  
+33 800 901 793

### Europe

Germany:  
800 1890272  
Other Countries:  
+31 13 5835404

### APAC

Shanghai:  
+ 86 21 2412 1618/19  
Sydney:  
+61 2 9751 8500



Our powerful portfolio of brands:  
**nVent.com CADDY ERICO HOFFMAN RAYCHEM SCHROFF**  
**TRACER**