

CADDY® ROD LOCK

Bottom-Mount Duct Bracket, Narrow

Part Number	Article Number	Rod Size	Load Rating for general applications* (3.0 safety factor)
CRLD37BNEG	N/A	3/8"	1,400 lbs [6,200N]
CRLDM8BNEG	390024	M8	650 lbs [2,900N]
CRLDM10BNEG	390025	M10	1,400 lbs [6,200N]

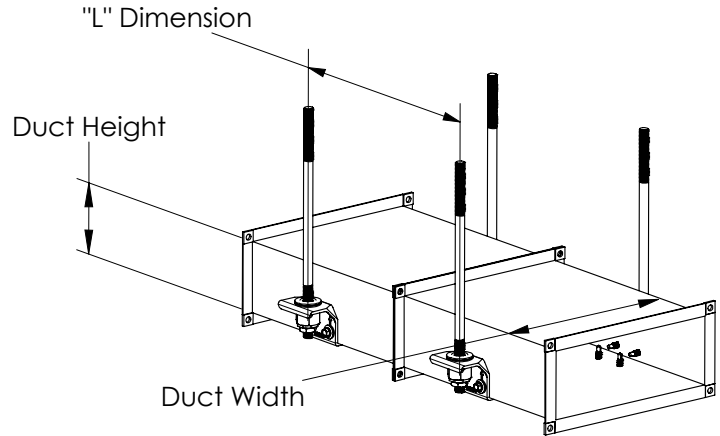
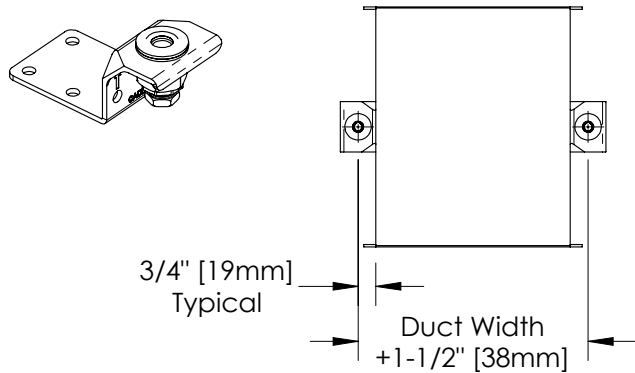
*Note: (4) screws are required for non-duct application.

**CRLD37BNEG (3/8") and CRLDM10BNEG (M10) were verified by the SMACNA Testing and Research Institute to be acceptable alternatives to the duct hanger systems prescribed in the ANSI®/SMACNA HVAC Duct Construction Standards (HVAC-DCS) 3rd edition, Chapter 5, Tables 5-1 and 5-1M.

Rectangular Duct Application

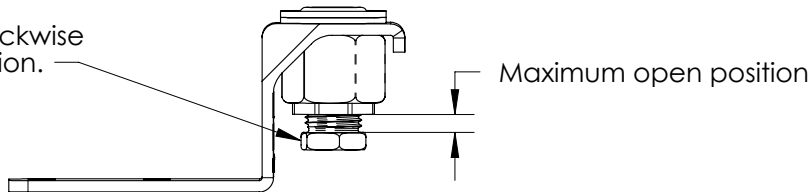
Max. Half of Duct Perimeter***	3/8", M8, M10 Threaded Rod **		
	"L" Dimension		
P/2 = 30"	L = 10ft [3m]	L = 8ft [2.4m]	L = 5ft [1.5m]
P/2 = 72"			
P/2 = 96"			
P/2 = 120"	--	--	
P/2 = 168"	--	--	
P/2 = 192"	--	--	

***P/2 = (Duct Height) + (Duct Width)



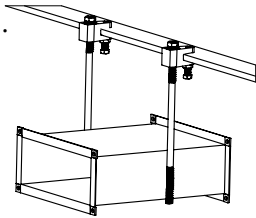
Step 0:

Rotate lock nut counter clockwise until reaches stopping position.



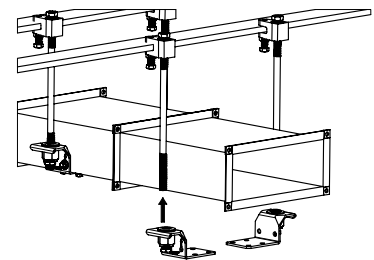
Step 1:

Lift duct into place. Hold in desired position.



Step 2:

Install Duct Bracket by pushing on to threaded rods.



WARNING:

1. ERICO products shall be installed and used only as indicated in ERICO product instruction sheets and training materials. Instruction sheets are available at www.erico.com and from your ERICO customer service representative.
2. ERICO products must never be used for a purpose other than the purpose for which they were designed or in a manner that exceeds specified load ratings.
3. All instructions must be completely followed to ensure proper and safe installation and performance.
4. Improper installation, misuse, misapplication or other failure to completely follow ERICO's instructions and warnings may cause product malfunction, property damage, serious bodily injury and death.
5. Products that are manufactured using spring steel components shall be used only in a non-corrosive indoor environment.
6. All pipe supports, hangers, intermediate components and structural attachments must ONLY be used as described herein and are NEVER to be used for any other purpose.

NOTE: All load ratings are for static conditions and do not account for dynamic loading such as wind, water or seismic loads, unless otherwise noted.

The customer is responsible for:

- a. Conformance to all governing codes.
- b. The integrity of structures to which the products are attached, including their capability of safely accepting the loads imposed, as evaluated by a qualified engineer.
- c. Using appropriate industry standard hardware as noted above.

SAFETY INSTRUCTIONS:

All governing codes and regulations and those required by the job site must be observed. Always use appropriate safety equipment such as eye protection, hard hat, and gloves as appropriate to the application.

ANSI is a registered trademark of American National Standards Institute.

CADDY, CADWELD, CRITEC, ERICO, ERIFLEX, ERITECH, and LENTON are registered trademarks of ERICO International Corporation.



TECHNICAL SUPPORT:
www.erico.com

CFS482_E

1 OF 2

© 2013, 2014 ERICO International Corporation.

ERICO®

Step 3:

Position duct for assembly

Previously installed duct

New duct

Step 3-3:
Complete duct joint for:
Flange connection
or
Slip & Drive connection.

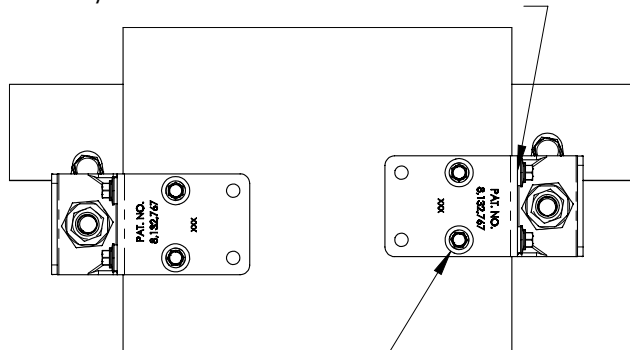
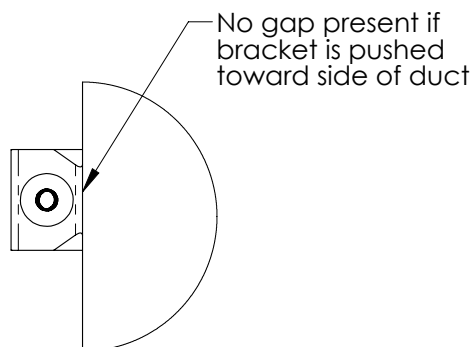
Step 3-1:
Tighten lock nut

Step 3-2:
Fine adjust duct height by wrench:
Clockwise = duct down
Counter-clockwise = duct up

Step 4 (Option #1):

Install screws if no gap is present on sides.

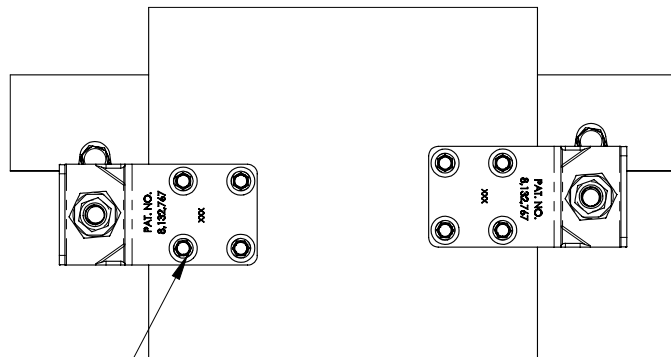
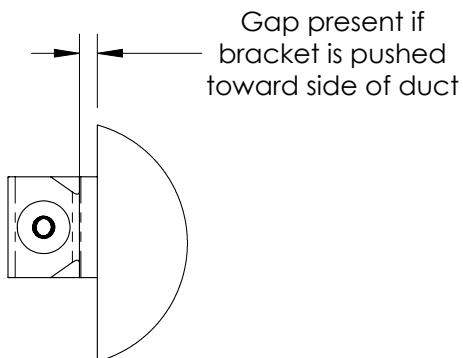
First, install two (2) self-drilling screws
(included) to side surface of each bracket



Second, install two (2) self-drilling
screws (included) on the bottom
surface of each bracket

Step 4 (Option #2):

Install screws if gap is present on sides.



CADDY, CADWELD, CRITEC, ERICO, ERIFLEX, ERITECH, and LENTON are registered trademarks of ERICO International Corporation.

TECHNICAL SUPPORT:
www.erico.com

CFS482_E

2 OF 2

© 2013, 2014 ERICO International Corporation.

ERICO®