

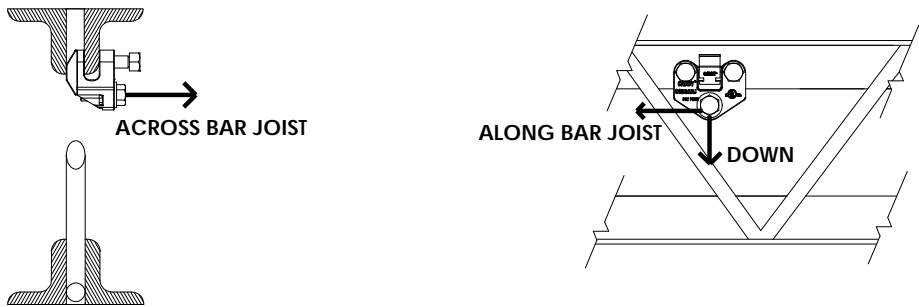
# CSBBARJ

## STRUCTURAL ATTACHMENT FITTING

### BAR JOIST ADAPTER

*Part Number	Flange Thickness		UL® Load Ratings			FM® Load Ratings
			Across Bar Joist	Along Bar Joist	Down	All Directions
	INCH	mm	lbs. (N)	lbs. (N)	lbs. (N)	lbs. (N)
CSBBARJ(XX)	1/4 to 1/2	6 to 13	3740 (16635)	3000 (13340)	3740 (16635)	4200 (18680)

\*(XX) = Finish Specifier  
FM Approved when used with 1, 1-1/4, 1-1/2, or 2-inch Schedule 40 or GB/T 3091 brace pipe



Sway Brace assemblies are intended to be installed in accordance with NFPA-13 and the manufacturer's installation instructions.

The required type, number, and size of fasteners used for the structure attachment fitting shall be in accordance with NFPA-13.



- WARNING:**
- 1. ERICO products shall be installed and used only as indicated in ERICO product instruction sheets and training materials. Instruction sheets are available at [www.erico.com](http://www.erico.com) and from your ERICO customer service representative.
  - 2. ERICO products must never be used for a purpose other than the purpose for which they were designed or in a manner that exceeds specified load ratings.
  - 3. All instructions must be completely followed to ensure proper and safe installation and performance.
  - 4. Improper installation, misuse, misapplication or other failure to completely follow ERICO's instructions and warnings may cause product malfunction, property damage, serious bodily injury and death.
  - 5. Products that are manufactured using spring steel components shall be used only in a non-corrosive indoor environment.
  - 6. All pipe supports, hangers, intermediate components and structural attachments must ONLY be used as described herein and are NEVER to be used for any other purpose.

**NOTE:** All load ratings are for static conditions and do not account for dynamic loading such as wind, water or seismic loads, unless otherwise noted.

The customer is responsible for:

- a. Conformance to all governing codes.
- b. The integrity of structures to which the products are attached, including their capability of safely accepting the loads imposed, as evaluated by a qualified engineer.
- c. Using appropriate industry standard hardware as noted above.

**SAFETY INSTRUCTIONS:**  
All governing codes and regulations and those required by the job site must be observed.  
Always use appropriate safety equipment such as eye protection, hard hat, and gloves as appropriate to the application.

UL is a registered trademark of Underwriters Laboratory, Inc.  
FM is a registered certification mark of FM Approvals LLC, LTD.  
NFPA is a registered trademark of National Fire Protection Association

CADDY, CADWELD, CRITEC, ERICO, ERIFLEX, ERITECH, and LENTON are registered trademarks of ERICO International Corporation.

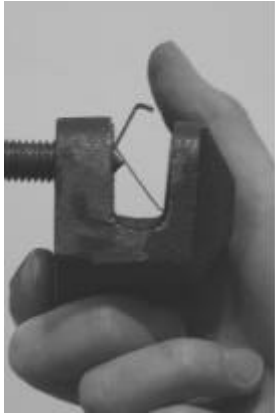
TECHNICAL SUPPORT:  
[www.erico.com](http://www.erico.com)



# CSBBARJ

## STRUCTURAL ATTACHMENT FITTING BAR JOIST ADAPTER

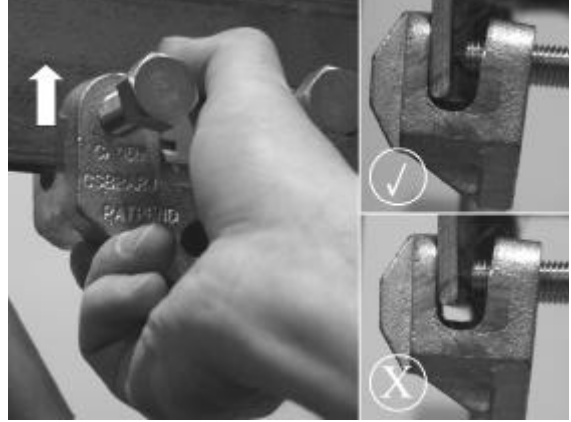
#1A



#1B



#2



#3



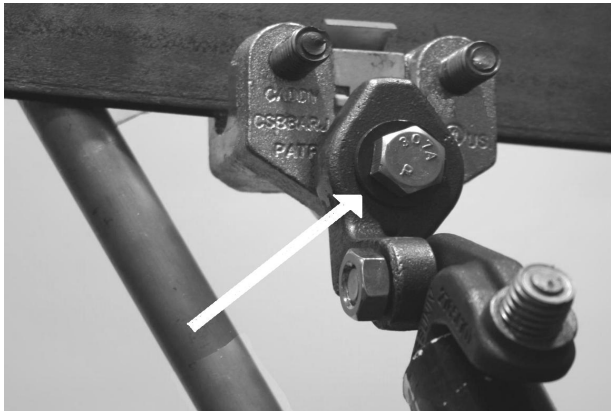
#4



#5



#6



**MINIMUM INSTALL TORQUE**  
**55ft-lb (75 N-m)**



CSBBARJ is a Structural Attachment Fitting. It is intended to be combined with CSBUNIV, TP225, and SB55N Structural Attachment Fittings, "Bracing Pipe" and a CADDY® brand Sway Brace ("Braced Pipe") Fitting to form a complete bracing assembly.

**CAUTION :** Spring only to be used as installation aid and is designed to support weight of CSBBARJ only. CSBBARJ must be tightened securely to flange prior to other structural attachments or brace materials being secured to CSBBARJ.

Sway Braces are intended to be installed in accordance with NFPA-13 and the manufacturer's assembly and instructions.