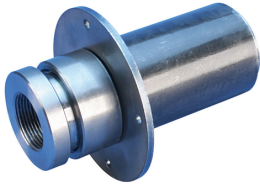


P8 POSITION COUPLER WITH FORM SAVING PLATE



Used in segmental pour and closure pour applications. Permanent form saving plates allow easy attachment to form work, eliminating costly damage to the forms.

FEATURES

Designed to splice the same diameter bars

Designed to splice two curved, bent or straight bars, when neither bar can be rotated and where the ongoing bar is NOT free to move in its axial direction

Adjustability in the female end of the coupler allows the coupler to extend out to meet the taper-threaded reinforcing bar

SPECIFICATIONS

Catalog Number	Material	Finish	100 % U.S. Domestic Content	Rebar Size, US	Diameter 1(Ø1)	Diameter 2(Ø2)	Length 1(L1)	Length 2(L2)	Bar Depth(BD)	Bar Gap 1(BG1)	Bar Gap 2(BG2)	Coupler Body (CB)	Unit Weight
EL32S1P80572	Steel	Plain	Yes	#10	2.500"	4.500"	7.310"	9.700"	1.58"	4.14"	6.53"	5.72"	9.300 lb

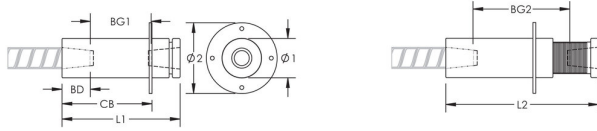
Designed to Meet

AASHTO;ABNT NBR 8548:1984;ACI 318 Type 1 (125% Specified Yield);ACI 318 Type 2 (Specified Tensile);ACI 349;ACI 359;AS3600;CAN/CSA - N287.2/.3/.4;IBC Type 1 (125% Specified Yield);IBC Type 2 (Specified Tensile);ISO 15835;US Army Corps of Engineers;CAN/CSA - A23.3

ADDITIONAL PRODUCT DETAILS

Bar dimensions and weights listed may vary by region. Coupler sizes not shown may be available by special order. Contact your nVent LENTON representative for more information.

DIAGRAMS



WARNING

nVent products shall be installed and used only as indicated in nVent's product instruction sheets and training materials. Instruction sheets are available at www.nvent.com and from your nVent customer service representative. Improper installation, misuse, misapplication or other failure to completely follow nVent's instructions and warnings may cause product malfunction, property damage, serious bodily injury and death and/or void your warranty.

North America

+1.800.753.9221

Option 1 – Customer Care

Option 2 – Technical Support

Europe

Netherlands:

+31 800-0200135

France:

+33 800 901 793

Europe

Germany:

800 1890272

Other Countries:

+31 13 5835404

APAC

Shanghai:

+ 86 21 2412 1618/19

Sydney:

+61 2 9751 8500



Our powerful portfolio of brands:

nVent.com CADDY ERICO HOFFMAN RAYCHEM SCHROFF TRACER

© 2022 nVent. All nVent marks and logos are owned or licensed by nVent Services GmbH or its affiliates. All other trademarks are the property of their respective owners.

nVent reserves the right to change specifications without notice.