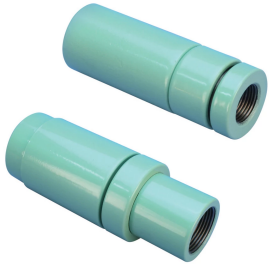


P8 POSITION COUPLER, COATED



Coated reinforcing bar is used in place of plain reinforcing bars to protect against corrosion. Typical applications include bridges, parking structures, pavement, marine structures and repair work. nVent LENTON couplers and mechanical anchors are available in multiple coatings to meet specific job requirements.

FEATURES

Designed to splice the same diameter bars

Designed to splice two curved, bent or straight bars, when neither bar can be rotated and where the ongoing bar is NOT free to move in its axial direction

Adjustability in the female end of the coupler allows the coupler to extend out to meet the taper-threaded reinforcing bar

SPECIFICATIONS

Finish Standard: ASTM® A775/A775M and AASHTO M284
 Finish: Epoxy Coated
 Material: Steel
 100% U.S. Domestic Content: Yes

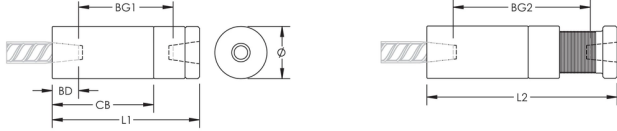
Catalog Number	Rebar Size, US	Rebar Size, Canada	Diameter (Ø)	Length 1(L1)	Length 2(L2)	Bar Depth(BD)	Bar Gap 1(BG1)	Bar Gap 2(BG2)	Coupler Body(CB)	Unit Weight
EL28P8ES	#9	30M	2.500"	6.880"	9.260"	1.49"	3.90"	6.28"	5.29"	8.500 lb
EL36P8ES	#11	35M	2.500"	7.820"	10.390"	1.68"	4.46"	7.03"	6.23"	9.100 lb
EL43TP8ES	#14	45M	3"	11.400"	15.100"	2.20"	7"	10.70"	7.80"	18 lb

Designed to Meet: AASHTO;ABNT NBR 8548:1984;ACI 318 Type 1 (125% Specified Yield);ACI 318 Type 2 (Specified Tensile);ACI 349;ACI 359;AS3600;CAN/CSA - N287.2/.3/.4;IBC Type 1 (125% Specified Yield);IBC Type 2 (Specified Tensile);ISO 15835;US Army Corps of Engineers;CAN/CSA - A23.3

ADDITIONAL PRODUCT DETAILS

Bar dimensions and weights listed may vary by region. Coupler sizes not shown may be available by special order. Contact your nVent LENTON representative for more information.

DIAGRAMS



WARNING

nVent products shall be installed and used only as indicated in nVent's product instruction sheets and training materials. Instruction sheets are available at www.nvent.com and from your nVent customer service representative. Improper installation, misuse, misapplication or other failure to completely follow nVent's instructions and warnings may cause product malfunction, property damage, serious bodily injury and death and/or void your warranty.

North America

+1.800.753.9221
Option 1 – Customer Care
Option 2 – Technical Support

Europe

Netherlands:
+31 800-0200135
France:
+33 800 901 793

Europe

Germany:
800 1890272
Other Countries:
+31 13 5835404

APAC

Shanghai:
+ 86 21 2412 1618/19
Sydney:
+61 2 9751 8500



Our powerful portfolio of brands:
nVent.com CADDY ERICO HOFFMAN RAYCHEM SCHROFF
TRACER