

# END ALIGNMENT FITTING



End alignment fittings properly locate the sleeve onto the reinforcing steel. The fittings also retain the packing materials and hold them in place, which helps ensure a leak-free installation.

## FEATURES

Durable, re-usable and long lasting

Easily replaced if damaged

Split-collar design allows for easy installation and removal

## SPECIFICATIONS

**Material** Steel

Catalog Number	Rebar Size, US	Rebar Size, Canada	Height(H)	Diameter 1(Ø1)	Diameter 2(Ø2)
RBM2974100U	#6	20M	2.500"	2.750"	1.400"
RBM2974125X	#6	20M	2.500"	2.750"	1.530"
RBM2870100A	#7		2.500"	2.750"	1.650"
RBM2886112C	#8	25M	2.500"	2.750"	1.920"
RBM2886150D	#8	25M	2.500"	2.750"	2.160"
RBM2748100D	#9	30M	2.500"	2.750"	2.170"
RBM275075E	#10		2.500"	2.750"	2.280"
RBM2767100E	#9	30M	2.500"	2.750"	2.290"
RBM266785F	#11	35M	2.500"	3"	2.540"
RBM2669100H	#14	45M	2.500"	3.380"	2.920"
RBM2669125J	#14	45M	2.500"	3.380"	3.040"
RBM266975G	#14	45M	2.500"	3.380"	2.990"
RBM2671100M	#18	55M	2.500"	4.380"	3.970"
RBM2671125N	#18	55M	2.500"	4.380"	3.910"
RBM267150K	#18	55M	2.500"	4.380"	3.420"

Catalog Number	Rebar Size, US	Rebar Size, Canada	Height(H)	Diameter 1(Ø1)	Diameter 2(Ø2)
RBM267156K	#18	55M	2.500"	4.380"	3.420"
RBM267885K	#14	45M	2.500"	4"	3.420"
RBM2687126G	#11	35M	2.500"	3.380"	2.790"
RBM2750125F	#10		2.500"	3"	2.540"
RBM2759K	#11	35M	2.500"	4"	3.420"

## ADDITIONAL PRODUCT DETAILS

---

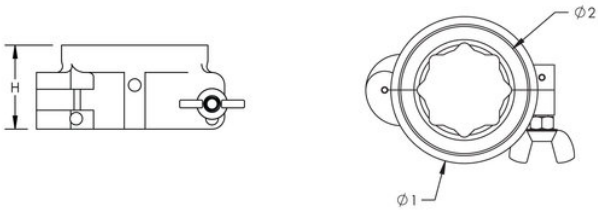
Diameter 2 is the mating surface for the outside diameter of the appropriate sleeve.

Prior to installation, please read and understand all of the detailed instructions and safety notices provided in the nVent LENTON Cadweld Rebar Splicing System Instruction Manual.

Sizes not shown may be available by special order. Contact your nVent LENTON representative for more information.

## DIAGRAMS

---



## WARNING

---

nVent products shall be installed and used only as indicated in nVent's product instruction sheets and training materials. Instruction sheets are available at [www.nvent.com](http://www.nvent.com) and from your nVent customer service representative. Improper installation, misuse, misapplication or other failure to completely follow nVent's instructions and warnings may cause product malfunction, property damage, serious bodily injury and death and/or void your warranty.

**North America**

+1.800.753.9221

Option 1 – Customer Care

Option 2 – Technical Support

**Europe**

Netherlands:

+31 800-0200135

France:

+33 800 901 793

**Europe**

Germany:

800 1890272

Other Countries:

+31 13 5835404

**APAC**

Shanghai:

+ 86 21 2412 1618/19

Sydney:

+61 2 9751 8500



Our powerful portfolio of brands:  
**nVent.com CADDY ERICO HOFFMAN RAYCHEM SCHROFF TRACER**

© 2022 nVent. All nVent marks and logos are owned or licensed by nVent Services GmbH or its affiliates. All other trademarks are the property of their respective owners.

nVent reserves the right to change specifications without notice.