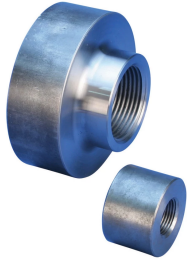


# D16 MECHANICAL ANCHOR, PLAIN, USA DESIGN



## CERTIFICATIONS



## FEATURES

Replaces conventional hooked reinforcing bar

Simplifies reinforcing bar placement and lowers placing costs

Head area exceeds 5x bar area (net 4x)

## SPECIFICATIONS

<b>Finish</b>	Plain
<b>Material</b>	Steel
<b>Design Version</b>	Worldwide (Globally Available Materials)
<b>100% U.S. Domestic Content</b>	Yes

Catalog Number	Rebar Size, US	Rebar Size, Canada	Diameter 1(Ø1)	Diameter 2(Ø2)	Length 1(L1)	Length 2(L2)	Unit Weight
EL12D16	#4	10M	1.380"		0.730"		0.300 lb
EL16D16	#5	15M	1.500"		0.940"		0.400 lb
EL20D16	#6	20M	1.880"		1.380"		0.900 lb
EL22D16	#7		2"		1.480"		1.100 lb
EL25D16	#8	25M	2.250"		1.570"		1.500 lb
EL28D16	#9	30M	2.750"		1.650"		2.400 lb
EL32D16	#10		3"		1.790"		3.100 lb

Catalog Number	Rebar Size, US	Rebar Size, Canada	Diameter 1(Ø1)	Diameter 2(Ø2)	Length 1(L1)	Length 2(L2)	Unit Weight
EL43TD16	#14	45M	4"	3.150"	2.640"	1.640"	6.730 lb
EL36D16	#11	35M	3.250"		2.050"		4 lb
EL57TD16	#18	55M	5.130"	3.150"	3.310"	2.410"	12.740 lb

### Designed to Meet

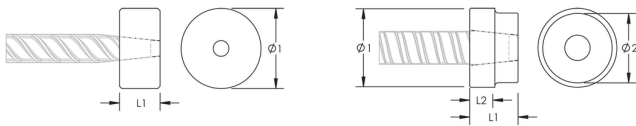
ACI 318;AS3600;ASTM A970

## ADDITIONAL PRODUCT DETAILS

Bar dimensions and weights listed may vary by region. Coupler sizes not shown may be available by special order. Contact your nVent LENTON representative for more information.

Thread does not need to be flush with end of nVent LENTON Terminator. Thread may be +/- 2 threads from backside of coupler.

## DIAGRAMS



## WARNING

nVent products shall be installed and used only as indicated in nVent's product instruction sheets and training materials. Instruction sheets are available at [www.nvent.com](http://www.nvent.com) and from your nVent customer service representative. Improper installation, misuse, misapplication or other failure to completely follow nVent's instructions and warnings may cause product malfunction, property damage, serious bodily injury and death and/or void your warranty.

### North America

+1.800.753.9221  
Option 1 – Customer Care  
Option 2 – Technical Support

### Europe

Netherlands:  
+31 800-0200135  
France:  
+33 800 901 793

### Europe

Germany:  
800 1890272  
Other Countries:  
+31 13 5835404

### APAC

Shanghai:  
+ 86 21 2412 1618/19  
Sydney:  
+61 2 9751 8500



Our powerful portfolio of brands:  
nVent.com **CADDY ERICO HOFFMAN RAYCHEM SCHROFF TRACER**