

# ANGULAR POURING BASIN, SIDE FILL, VARIABLE UPPER COMPONENT



## FEATURES

Made from heat-resistant graphite

Durable, re-usable and long lasting

## SPECIFICATIONS

Catalog Number	Material	Diameter(Ø)	Length 1(L1)	Length 2(L2)	Width(W)	Height 1(H1)	Height 2(H2)
RBWS2468	Graphite	2.270"	6.250"	4.500"	3"	10.750"	4"

## ADDITIONAL PRODUCT DETAILS

Side fill pouring basins are used when interferences of the structure will not allow top filling of the sleeve. Variable angle side fill pouring basins are used when one of the predefined angle pouring basins is not available or when a project has multiple reinforcing steel angles.

The upper component is universal to all sleeve sizes and is always used in conjunction with the bottom component.

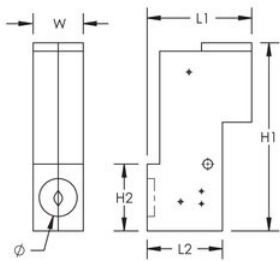
RBWS2468 pouring basins require one RBW350 and one RBW734 pouring basin frame and one RBS5000 bolt retainer (sold separately).

Contact nVent LENTON for assistance in sleeve selection.

Prior to installation, please read and understand all of the detailed instructions and safety notices provided in the nVent LENTON Cadweld Rebar Splicing System instruction manual.

Sizes not shown may be available by special order. Contact your nVent LENTON representative for more information.

## DIAGRAMS



## WARNING

nVent products shall be installed and used only as indicated in nVent's product instruction sheets and training materials. Instruction sheets are available at [www.nvent.com](http://www.nvent.com) and from your nVent customer service representative. Improper installation, misuse, misapplication or other failure to completely follow nVent's instructions and warnings may cause product malfunction, property damage, serious bodily injury and death and/or void your warranty.

### North America

+1.800.753.9221

Option 1 – Customer Care

Option 2 – Technical Support

### Europe

Netherlands:

+31 800-0200135

France:

+33 800 901 793

### Europe

Germany:

800 1890272

Other Countries:

+31 13 5835404

### APAC

Shanghai:

+ 86 21 2412 1618/19

Sydney:

+61 2 9751 8500



Our powerful portfolio of brands:

**nVent.com** CADDY ERICO HOFFMAN RAYCHEM SCHROFF TRACER

© 2022 nVent. All nVent marks and logos are owned or licensed by nVent Services GmbH or its affiliates. All other trademarks are the property of their respective owners.

nVent reserves the right to change specifications without notice.