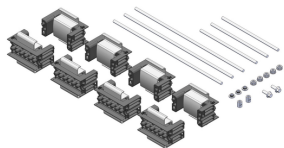


NVENT ERIFLEX FLEXBUS SUPPORT KIT FLAT 3 POLES, NEUTRAL



CERTIFICATIONS



FEATURES

Adjustable clip adapts to support different conductor thicknesses

Strong, mechanical resistance and short-circuit tested as per IEC 61914 up to 67kA rms – 147kA Peak

Adjustable distance between each conductor (12,5 mm pitch)

Installation side-by-side or on top

For use with 3P configuration

Mounting options for ceiling or wall

Mounting options for different cable trays types

Mounting options for horizontal or vertical orientations

SPECIFICATIONS

- -	
Insulation Voltage	1,000 VAC;1,500 VDC
Dielectric Strength, UL	1,500 VAC;1,500 VDC
Dielectric Strength, IEC 61439.1	3,500 VAC @ 1 min
Finish	Electrogalvanized
Material	Glass Fibre Reinforced Polyamide;Steel
Complies With	IEC@ 60695-2-11 (Glow Wire Test 960 °C);IEC@ 61439.1;IEC@ 61914
Halogen Free Rating	IEC@ 60754-1
Low Smoke Rating	ISO 5659-2
Flammability Rating	UL® 94V-0

Working Temperature

-40 to 266 °F

Catalog Number	Item Name	A	Depth(D)	Height(H)	Conductor Size	Unit Weight
FLEXSUPFLA50TN	508106	3.445"	3.091"	4.705"	220 mm ² , 360 mm ² , 545 mm ² , 640 mm ²	3.627 lb
FLEXSUPFLA100TN	508108	5.433"	3.091"	4.941"	960 mm ² , 1280 mm ² , 1810 mm ²	5.084 lb

Installation Standard

AS 3008;BS 7671;CEI 64-8;CSN;DIN VDE 0100;HD 384;IEC® 60364;NBR 5410;NEN 1010;NFC 15-100;NIBT-NIN;NP (2002);ONORM;REBT;RGIE-AREI

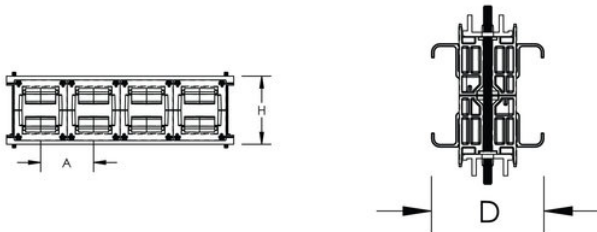
ADDITIONAL PRODUCT DETAILS

Support kit and aluminum profile are sold separately.

When cable tray is used, we recommend installing a Flexbus Support at each extremity, in order to protect the Flexbus Conductor against potential sharp edges of the cable tray.

For ease of installation of the Flexbus Conductors on cable trays, we recommend using cantilever systems in order to have easy and direct access during installation phases.

DIAGRAMS



WARNING

nVent products shall be installed and used only as indicated in nVent's product instruction sheets and training materials. Instruction sheets are available at www.nvent.com and from your nVent customer service representative. Improper installation, misuse, misapplication or other failure to completely follow nVent's instructions and warnings may cause product malfunction, property damage, serious bodily injury and death and/or void your warranty.

North America

+1.800.753.9221

Option 1 – Customer Care

Option 2 – Technical Support

Europe

Netherlands:

+31 800-0200135

France:

+33 800 901 793

Europe

Germany:

800 1890272

Other Countries:

+31 13 5835404

APAC

Shanghai:

+ 86 21 2412 1618/19

Sydney:

+61 2 9751 8500



Our powerful portfolio of brands:
nVent.com CADDY ERICO HOFFMAN RAYCHEM SCHROFF TRACER

© 2022 nVent. All nVent marks and logos are owned or licensed by nVent Services GmbH or its affiliates. All other trademarks are the property of their respective owners.

nVent reserves the right to change specifications without notice.