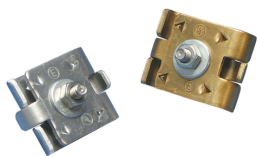


STAMPED BOLTED PARALLEL CABLE CONNECTOR



CERTIFICATIONS



FEATURES

For positive bolt tension cable clamping

Listed to UL® 96

SPECIFICATIONS

Conductor Size, UL Class 1 - Class 2 (4/0 Max)

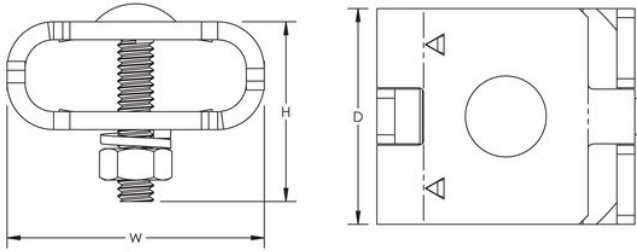
Finish Tinned

Catalog Number	Material	Depth(D)	Height(H)	Width(W)	Unit Weight
LPA502	Aluminum	1 1/2"	1 1/2"	1.780"	0.087 lb
LPC502	Copper	1 1/2"	1 1/2"	1.780"	0.215 lb
LPC502A	Copper, Aluminum, Stainless Steel 304 (EN 1.4301)	1 1/2"	1 1/2"	1.780"	0.194 lb
LPC502L	Copper	1 1/2"	1 1/2"	1.780"	0.215 lb

ADDITIONAL PRODUCT DETAILS

Stainless steel separator included with LPC502A for bi-metallic applications.

DIAGRAMS



WARNING

nVent products shall be installed and used only as indicated in nVent's product instruction sheets and training materials. Instruction sheets are available at www.nvent.com and from your nVent customer service representative. Improper installation, misuse, misapplication or other failure to completely follow nVent's instructions and warnings may cause product malfunction, property damage, serious bodily injury and death and/or void your warranty.

North America

+1.800.753.9221

Option 1 – Customer Care

Option 2 – Technical Support

Europe

Netherlands:

+31 800-0200135

France:

+33 800 901 793

Europe

Germany:

800 1890272

Other Countries:

+31 13 5835404

APAC

Shanghai:

+ 86 21 2412 1618/19

Sydney:

+61 2 9751 8500



Our powerful portfolio of brands:

nVent.com CADDY ERICO HOFFMAN RAYCHEM SCHROFF TRACER

© 2022 nVent. All nVent marks and logos are owned or licensed by nVent Services GmbH or its affiliates. All other trademarks are the property of their respective owners.

nVent reserves the right to change specifications without notice.