

CADWELD MULTI BATTING MATERIAL

CATALOG NUMBER

SCDM01



FEATURES

Battings allow for numerous nVent ERICO Cadweld welded connections to be produced from the same mold

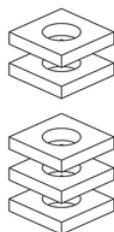
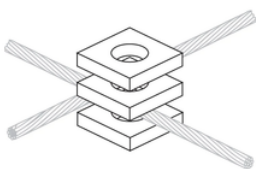
Battings are compressed in the nVent ERICO Cadweld Multi to seal the connection area

A standard package of battings includes one set of 33 battings for the nVent ERICO Cadweld Multi process

ADDITIONAL PRODUCT DETAILS

See instructions to determine the number of battings required for each connection type.

DIAGRAMS



WARNING

nVent products shall be installed and used only as indicated in nVent's product instruction sheets and training materials. Instruction sheets are available at www.nvent.com and from your nVent customer service representative. Improper installation, misuse, misapplication or other failure to completely follow nVent's instructions and warnings may cause product malfunction, property damage, serious bodily injury and death and/or void your warranty.

North America

+1.800.753.9221

Option 1 – Customer Care

Option 2 – Technical Support

Europe

Netherlands:

+31 800-0200135

France:

+33 800 901 793

Europe

Germany:

800 1890272

Other Countries:

+31 13 5835404

APAC

Shanghai:

+ 86 21 2412 1618/19

Sydney:

+61 2 9751 8500



Our powerful portfolio of brands:
nVent.com **CADDY ERICO HOFFMAN RAYCHEM SCHROFF TRACER**

© 2022 nVent. All nVent marks and logos are owned or licensed by nVent Services GmbH or its affiliates. All other trademarks are the property of their respective owners.

nVent reserves the right to change specifications without notice.