

1 HOLE OFFSET LUG, COPPER, NEMA, 3" X 1" X 0.25", 0.563" HOLE

CATALOG NUMBER

B101EEOL



FEATURES

Provides an efficient bolting surface for grounding and power applications

Electrolytic grade copper

For use with nVent ERICO Cadweld type LA connections only

PRODUCT ATTRIBUTES

Material: Copper

Finish: Tinned

Type: NEMA®

Height: 0.750"

Length: 3"

Width: 1"

Thickness: 0.250"

A: 0.625"

B: 1.280"

C: 1.060"

Hole Size: 0.562"

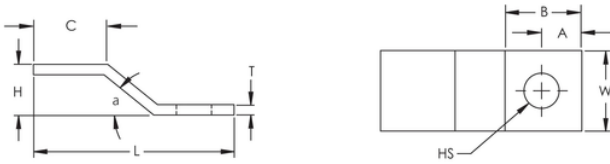
Angle: 45°

Equivalent Conductor Size: 318 kcmil

ADDITIONAL PRODUCT DETAILS

For sizes not listed, contact us.

DIAGRAMS



WARNING

nVent products shall be installed and used only as indicated in nVent's product instruction sheets and training materials. Instruction sheets are available at www.nvent.com and from your nVent customer service representative. Improper installation, misuse, misapplication or other failure to completely follow nVent's instructions and warnings may cause product malfunction, property damage, serious bodily injury and death and/or void your warranty.

North America

+1.800.753.9221
Option 1 – Customer Care
Option 2 – Technical Support

Europe

Netherlands:
+31 800-0200135
France:
+33 800 901 793

Europe

Germany:
800 1890272
Other Countries:
+31 13 5835404

APAC

Shanghai:
+ 86 21 2412 1618/19
Sydney:
+61 2 9751 8500



Our powerful portfolio of brands:
nVent.com **CADDY ERICO HOFFMAN RAYCHEM SCHROFF TRACER**