

# AIRCRAFT GROUNDING RECEPTACLE WITH BALL STUD



## FEATURES

Castings for use in static grounding systems of refueling areas

Easily connected to grounding system conductor and/or ground rods

Designed for simple installation with flush paved surfaces

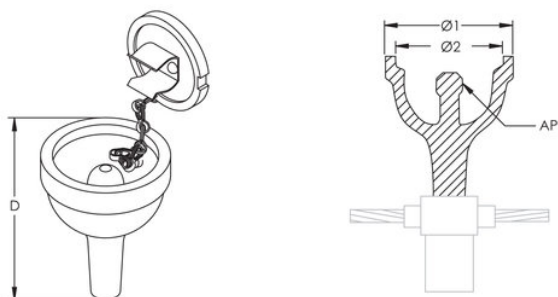
Compatible with nVent ERICO Cadweld connections

## SPECIFICATIONS

**Material** Phosphor Bronze

Catalog Number	Diameter 1(Ø1)	Diameter 2(Ø2)	Depth(D)	Attachment Point(AP)	Pipe Size	Connection Type
B165	2 3/4"	2 3/16"	4 1/2"	Permanent 5/8" Ball Stud	1/2"	RA, RB
B165R	2 3/4"	2 3/16"	4 1/2"	Removable 5/8" Ball Stud	1/2"	RA, RB

## DIAGRAMS



## WARNING

nVent products shall be installed and used only as indicated in nVent's product instruction sheets and training materials.

Instruction sheets are available at [www.nvent.com](http://www.nvent.com) and from your nVent customer service representative. Improper installation, misuse, misapplication or other failure to completely follow nVent's instructions and warnings may cause product malfunction, property damage, serious bodily injury and death and/or void your warranty.

**⚠ WARNING:** This product can expose you to chemicals including lead, which is known to the State of California to cause cancer and birth defects or other reproductive harm.- For more information go to [www.P65Warnings.ca.gov](http://www.P65Warnings.ca.gov).

**North America**

+1.800.753.9221

Option 1 – Customer Care

Option 2 – Technical Support

**Europe**

Netherlands:

+31 800-0200135

France:

+33 800 901 793

**Europe**

Germany:

800 1890272

Other Countries:

+31 13 5835404

**APAC**

Shanghai:

+ 86 21 2412 1618/19

Sydney:

+61 2 9751 8500



Our powerful portfolio of brands:

**nVent.com CADDY ERICO HOFFMAN RAYCHEM SCHROFF TRACER**

© 2022 nVent. All nVent marks and logos are owned or licensed by nVent Services GmbH or its affiliates. All other trademarks are the property of their respective owners.

nVent reserves the right to change specifications without notice.