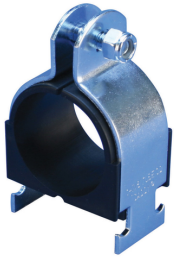




NVENT CADDY CUSHION CLAMP INSULATED STRUT CLAMP FOR PIPE/TUBE, 4 1/2" OD, 4" PIPE

CATALOG NUMBER

CCC0450



FEATURES

Fits into open side of strut channel

Plastic cushion is hinged to spread apart for easy installation

Reduces noise and absorbs shock by gripping the pipe/tube firmly

Square neck of carriage bolt prevents over-tightening

Nylon locknut prevents loosening under vibration

FM® Specification Tested (from 3/8" to 4" of Copper Tube Size)

PRODUCT ATTRIBUTES

Material: Steel;Polypropylene

Finish: Zinc Chromate

Outer Diameter: 4 1/2"

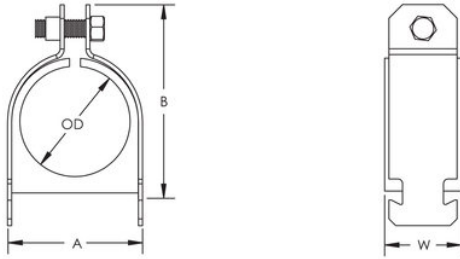
Pipe Size: 4"

Width: 1.562"

A: 5.200"

B: 6.320"

DIAGRAMS



WARNING

nVent products shall be installed and used only as indicated in nVent's product instruction sheets and training materials. Instruction sheets are available at www.nvent.com and from your nVent customer service representative. Improper installation, misuse, misapplication or other failure to completely follow nVent's instructions and warnings may cause product malfunction, property damage, serious bodily injury and death and/or void your warranty.

North America

+1.800.753.9221

Option 1 – Customer Care

Option 2 – Technical Support

Europe

Netherlands:

+31 800-0200135

France:

+33 800 901 793

Europe

Germany:

800 1890272

Other Countries:

+31 13 5835404

APAC

Shanghai:

+ 86 21 2412 1618/19

Sydney:

+61 2 9751 8500



Our powerful portfolio of brands:

nVent.com CADDY ERICO HOFFMAN RAYCHEM SCHROFF TRACER

© 2022 nVent. All nVent marks and logos are owned or licensed by nVent Services GmbH or its affiliates. All other trademarks are the property of their respective owners.

nVent reserves the right to change specifications without notice.