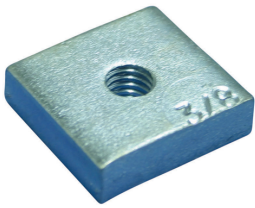




355N INSERT NUT FOR 355 CONCRETE INSERT, PLAIN, 3/8" ROD

CATALOG NUMBER

355N0037PL



FEATURES

Insert nut for 355 Concrete Insert

Conforms with Federal Specification WW-H-171 (Type 19), Manufacturers Standardization Society ANSI/MSS-SP-58 (Type 18)

PRODUCT ATTRIBUTES

Material: Steel

Finish: Plain

Rod Size: 3/8"

A: 1 1/4"

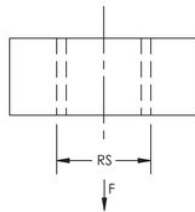
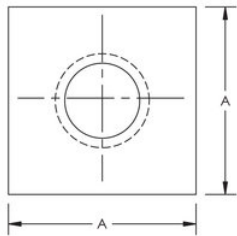
Static Load: 600 lb

ADDITIONAL PRODUCT DETAILS

Reduced support spacing is required.

Install in accordance with applicable code.

DIAGRAMS



WARNING

nVent products shall be installed and used only as indicated in nVent's product instruction sheets and training materials. Instruction sheets are available at www.nvent.com and from your nVent customer service representative. Improper installation, misuse, misapplication or other failure to completely follow nVent's instructions and warnings may cause product malfunction, property damage, serious bodily injury and death and/or void your warranty.

North America

+1.800.753.9221
 Option 1 – Customer Care
 Option 2 – Technical Support

Europe

Netherlands:
 +31 800-0200135
 France:
 +33 800 901 793

Europe

Germany:
 800 1890272
 Other Countries:
 +31 13 5835404

APAC

Shanghai:
 + 86 21 2412 1618/19
 Sydney:
 +61 2 9751 8500



Our powerful portfolio of brands:
nVent.com CADDY ERICO HOFFMAN RAYCHEM SCHROFF TRACER

© 2022 nVent. All nVent marks and logos are owned or licensed by nVent Services GmbH or its affiliates. All other trademarks are the property of their respective owners.

nVent reserves the right to change specifications without notice.