

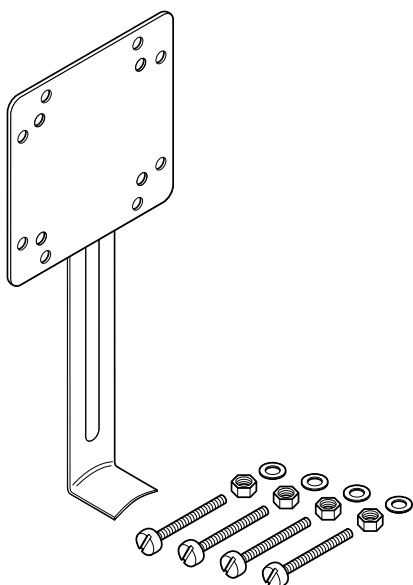


---

**RAYCHEM**

JB-SB-26

Support Bracket



## PACK CONTENTS

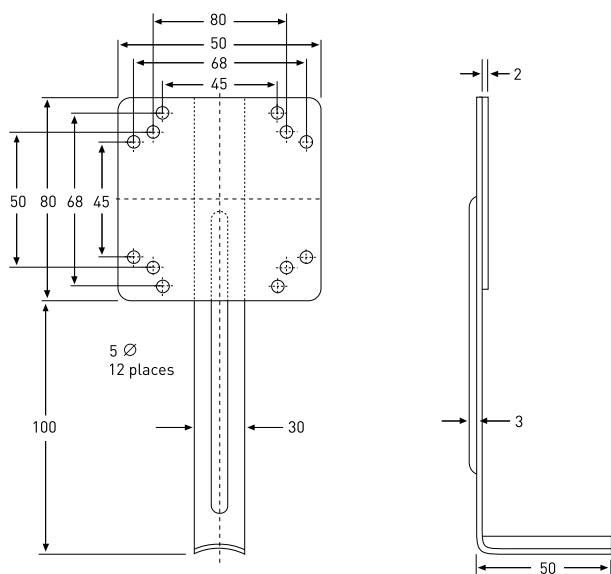
1 Support Bracket  
4 M4 x 20 mm cheesehead screws  
4 M4 nuts  
4 M4 washers

## SUPPORT BRACKET

Material Grade 316 stainless steel to  
BS 1449: Part 2: 1983  
Marking Die stamped JB-SB-26

## ORDERING DETAILS

Part description JB-SB-26  
PN 338265-000  
Pack size 1 per pack  
Requires two pipe straps (not supplied) Refer to page 150 (Pipe straps)



## APPLICATION

MONI-PT100-NH	JB-SB-26
MONI-PT100-EXE	JB-SB-26
MONI-PT100-4/20MA	JB-SB-26

**Europe, Middle East, Africa**

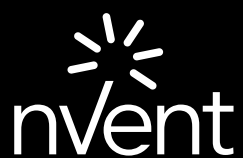
Tel +32.16.213.511  
Fax +32.16.213.604  
[thermal.info@nvent.com](mailto:thermal.info@nvent.com)

**United Kingdom**

Tel 0800 969 013  
Fax 0800 968 624  
[salesthermalUK@nVent.com](mailto:salesthermalUK@nVent.com)

**Ireland**

Tel 1800 654 241  
Fax 1800 654 240  
[salesIE@nVent.com](mailto:salesIE@nVent.com)



**[nVent.com](http://nVent.com)**

©2018 nVent. All nVent marks and logos are owned or licensed by nVent Services GmbH or its affiliates. All other trademarks are the property of their respective owners. nVent reserves the right to change specifications without notice.

Raychem-IM-INSTALLX1-JBSB26-EN-1805