



401 CLEVIS HANGER



CERTIFICATIONS



FEATURES

Recommended for the suspension of stationary non-insulated pipe lines

Flared edges help prevent sharp surfaces from coming into contact with the pipe (1/2" to 2" pipe sizes)

Clevis bottom pivots to allow pipe to be fed from either direction

SPECIFICATIONS

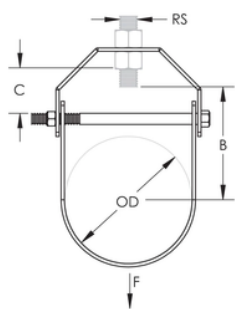
Finish: Electrogalvanized;Pregalvanized

Material: Steel

Catalog Number	Item Name	Pipe Size	NB/DN	Outer Diameter (OD)	Rod Size(RS)	A	B	C	Static Load(F)	Certifications
4010050E G	179398	1/2"	15	21 mm	M10	59 mm	29 mm	9 mm	2,700 N	cUL, ITB, UL
4010075E G	179399	3/4"	20	27 mm	M10	64 mm	32 mm	9 mm	2,700 N	cUL, FM, ITB, UL
4010100E G	179420	1"	25	34 mm	M10	71 mm	35 mm	9 mm	2,700 N	cUL, FM, ITB, UL
4010125E G	179421	1 1/4"	32	43 mm	M10	80 mm	40 mm	9 mm	2,700 N	cUL, FM, ITB, UL

Catalog Number	Item Name	Pipe Size	NB/DN	Outer Diameter (OD)	Rod Size(RS)	A	B	C	Static Load(F)	Certifications
4010150E G	179422	1 1/2"	40	48 mm	M10	94 mm	53 mm	17 mm	2,700 N	cUL, FM, ITB, UL
4010200E G	179423	2"	50	60 mm	M10	110 mm	63 mm	22 mm	2,700 N	cUL, FM, ITB, UL
4010250E G	179424	2 1/2"	65	76 mm	M12	134 mm	78 mm	25 mm	5,000 N	cUL, FM, ITB, UL
4010300E G	179425	3"	80	89 mm	M12	154 mm	90 mm	29 mm	5,000 N	cUL, FM, ITB, UL
4010350E G	179521	3 1/2"	90	101.6 mm	M12	172 mm	101 mm	34 mm	5,000 N	cUL, FM, UL
4010400E G	179426	4"	100	114 mm	M16	189 mm	111 mm	35 mm	5,000 N	cUL, FM, ITB, UL
4010500E G	179427	5"	125	140 mm	M16	231 mm	130 mm	41 mm	6,400 N	cUL, FM, ITB, UL
4010600E G	179428	6"	150	165 mm	M20	268 mm	153 mm	48 mm	8,600 N	cUL, FM, ITB, UL
4010800E G	179429	8"	200	219 mm	M20	356 mm	204 mm	80 mm	8,900 N	cUL, FM, ITB, UL
4011000E G	179430	10"	250	273 mm	M20	419 mm	230 mm	66 mm	16,000 N	ITB
4011200E G	179431	12"	300	324 mm	M20	473 mm	258 mm	78 mm	17,000 N	ITB

DIAGRAMS



WARNING

nVent products shall be installed and used only as indicated in nVent's product instruction sheets and training materials. Instruction sheets are available at www.nvent.com and from your nVent customer service representative. Improper installation, misuse, misapplication or other failure to completely follow nVent's instructions and warnings may cause product malfunction, property damage, serious bodily injury and death and/or void your warranty.

North America

+1.800.753.9221

Option 1 – Customer Care

Option 2 – Technical Support

Europe

Netherlands:

+31 800-0200135

France:

+33 800 901 793

Europe

Germany:

800 1890272

Other Countries:

+31 13 5835404

APAC

Shanghai:

+ 86 21 2412 1618/19

Sydney:

+61 2 9751 8500



Our powerful portfolio of brands:
nVent.com CADDY ERICO HOFFMAN RAYCHEM SCHROFF
TRACER