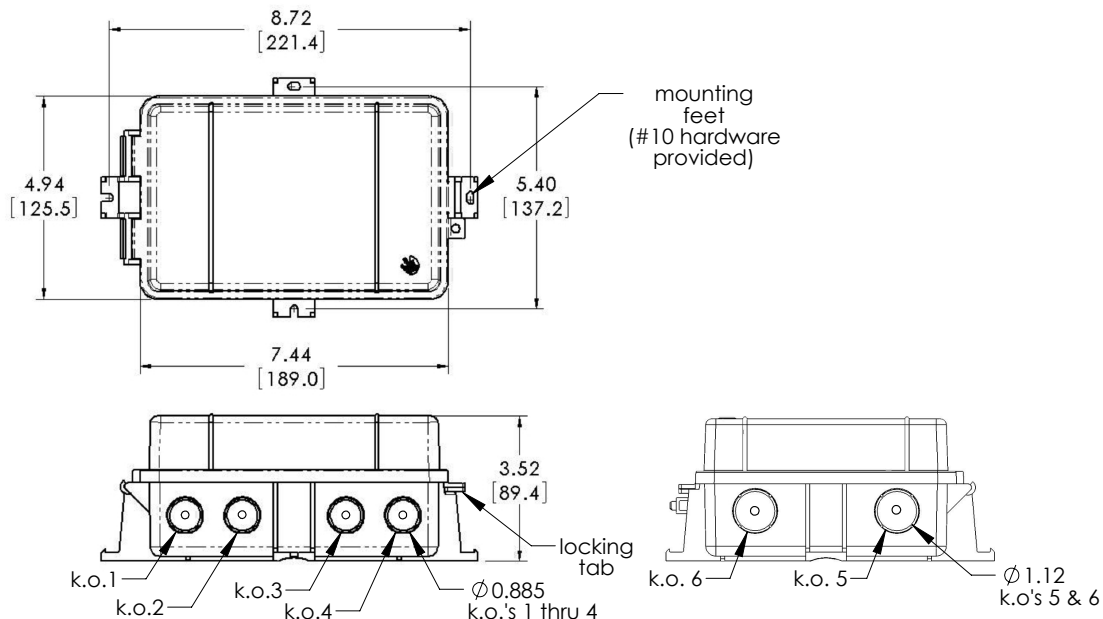


MWE

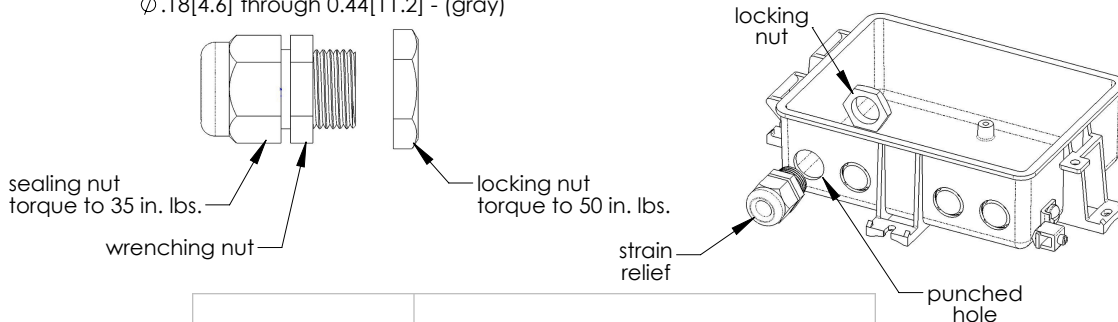
Non-Metallic Enclosure



Mounting

1. Pole mounting, use accessory CABTISS (sold separately).
2. Wall mounting, use the #10 hardware provided to mount to a wall or flat surface. Torque to 20 in-lb or 2.6 N-m. If plastic anchors are required, drill two 1/4" holes.
3. Use a hole knockout tool to punch out the 0.885" dia. or 1.12" dia. hole and remove any remaining burrs before inserting the cord grip.

strain relief accepts cable
 $\phi .18[4.6]$ through $0.44[11.2]$ - (gray)



Specifications	
Knockouts (Qty.6)	Qty 4, 0.885" Diameter hole Qty 2, 1.12" Diameter hole
Knockout Locations	Qty 4 On side, 2 On opposite side
Internal Standoffs	Qty 5, 6-32 Tapping, 1.61" [41mm] spacing, 0.32" [8mm] height
Useable Interior Space	6.8" [172.7] x 4.3" [109.2] x 3.1" [78.7]
Mounting	1" to 2" pole using CABTISS (not included) or wall mount using #10 screws (included)
Overall Size (LxWxH)	9.1"[231mm] x 5.8"[147mm] x 3.5"[89mm]
Weight	1.2Lbs [544g]

WARNING:

1. ERICO products shall be installed and used only as indicated in ERICO product instruction sheets and training materials. Instruction sheets are available at www.erico.com and from your ERICO customer service representative.
2. ERICO products must never be used for a purpose other than the purpose for which they were designed or in a manner that exceeds specified load ratings.
3. All instructions must be completely followed to ensure proper and safe installation and performance.
4. Improper installation, misuse, misapplication or other failure to completely follow ERICO's instructions and warnings may cause product malfunction, property damage, serious bodily injury and death.

SAFETY INSTRUCTIONS:

All governing codes and regulations and those required by the job site must be observed.
 Always use appropriate safety equipment such as eye protection, hard hat, and gloves as appropriate to the application.

CADDY, CADWELD, CRITEC, ERICO, ERITECH, ERIFLEX, and LENTON are registered trademarks of ERICO International Corporation.

