

# EARTHBRIDGE DB, ONE STUD, INSULATED CABLE, STRAIGHT



Earthbridges are assemblies made from a high-quality conductive earthpoint (connecting terminal) and various types of conductors. The nVent ERICO Cadweld exothermic connection process is used to combine them together, forming a highly corrosion resistant and long-lasting assembly.

## DIAGRAMS



## FEATURES

Long-lasting design

Low ground resistance and impedance

Superior electrical conductivity and resistance to corrosion

Electrically and mechanically robust and reliable

Easy to install

## SPECIFICATIONS

**Material:** Copper

**Earthpoint Type:** DB, One Stud

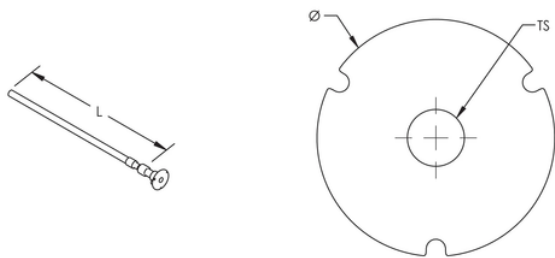
Catalog Number	Item Name	Conductor Type	Conductor Size	Length(L)	Diameter(Ø)	Thread Size(TS)
DB10C5005	166480	Yellow-Green Insulated Cable, Straight	50 mm <sup>2</sup> Stranded	500 mm	50 mm	M10
DB10C501	166490	Yellow-Green Insulated Cable, Straight	50 mm <sup>2</sup> Stranded	1,000 mm	50 mm	M10
DB10C701000		Yellow-Green Insulated Cable, Straight	70 mm <sup>2</sup> Stranded	1,000 mm	50 mm	M10

Catalog Number	Item Name	Conductor Type	Conductor Size	Length(L)	Diameter( $\emptyset$ )	Thread Size(TS)
DB10C701500		Yellow-Green Insulated Cable, Straight	70 mm <sup>2</sup> Stranded	1,500 mm	50 mm	M10
DB10C702000		Yellow-Green Insulated Cable, Straight	70 mm <sup>2</sup> Stranded	2,000 mm	50 mm	M10
DB10C70500		Yellow-Green Insulated Cable, Straight	70 mm <sup>2</sup> Stranded	500 mm	50 mm	M10
DB10C50S050H		Yellow-Green Insulated Cable, Straight	50 mm <sup>2</sup> Stranded	500 mm	50 mm	M10
DB10C50S100HC		Yellow-Green Insulated Cable, Straight	50 mm <sup>2</sup> Stranded	1,000 mm	50 mm	M10
DB10C70S050H		Yellow-Green Insulated Cable, Straight	70 mm <sup>2</sup> Stranded	500 mm	50 mm	M10
DB16N70S050C		NY Y-0 cable	70 mm <sup>2</sup> Stranded	500 mm	50 mm	M16
DB16N70S100C		NY Y-0 cable	70 mm <sup>2</sup> Stranded	1,000 mm	50 mm	M16
DB16N95S050C		NY Y-0 cable	95 mm <sup>2</sup> Stranded	500 mm	50 mm	M16
DB16N95S100C		NY Y-0 cable	95 mm <sup>2</sup> Stranded	1,000 mm	50 mm	M16

## ADDITIONAL PRODUCT DETAILS

Includes (1) brass bolt, (1) brass washer, (1) plastic cap, and (1) protective label.

## DIAGRAMS



## WARNING

nVent products shall be installed and used only as indicated in nVent's product instruction sheets and training materials. Instruction sheets are available at [www.nvent.com](http://www.nvent.com) and from your nVent customer service representative. Improper installation, misuse, misapplication or other failure to completely follow nVent's instructions and warnings may cause product malfunction, property damage, serious bodily injury and death and/or void your warranty.

**⚠ WARNING:** This product can expose you to chemicals including lead, which is known to the State of California to cause cancer and birth defects or other reproductive harm. For more information go to [www.P65Warnings.ca.gov](http://www.P65Warnings.ca.gov).

**North America**

+1.800.753.9221

Option 1 – Customer Care

Option 2 – Technical Support

**Europe**

Netherlands:

+31 800-0200135

France:

+33 800 901 793

**Europe**

Germany:

800 1890272

Other Countries:

+31 13 5835404

**APAC**

Shanghai:

+ 86 21 2412 1618/19

Sydney:

+61 2 9751 8500



Our powerful portfolio of brands:  
**nVent.com CADDY ERICO HOFFMAN RAYCHEM SCHROFF**  
**TRACER**